

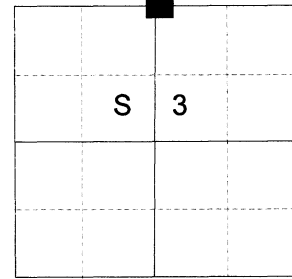
CERTIFIED RECORD OF LAND CORNER MONUMENTATION

HISTORY OF ORIGINAL CORNER ESTABLISHED:

Corner established by Timothy W. Davenport under GLO Contract No. 102, dated July 20th, 1863. Surveyor General notes state: Set qr. sec. post, made mound of Earth and drove charred stake as per inst.

Oregon State Highway Department strip map 5B-2-7 (1935) and 6B-13-20 (1944) shows a "Fence Cor." at the corner position.

T 3 S R 39 E A-15



DESCRIPTION OF CORNER EVIDENCE FOUND:

Found a 1 1/2" x 6' tall iron pipe broken off at 2', being 4" below ground. Portion that remains in the ground was found to be lodged in a 2" x 24" iron pipe, 24" below ground, that was lodged in a 2 1/2" iron pipe, the top of which, upon excavation, is 24" below ground and in a 2 1/2 ft. diam. collar of stone.

SEE SURVEY NUMBER 017-2024

DESCRIPTION OF MONUMENT AND ACCESSORIES I ESTABLISHED TO MONUMENT THE ORIGINAL LOCATION OF THIS CORNER:

At center of found 2 1/2" iron pipe, I set a 2 1/2" x 30" aluminum pipe, 24" in the ground, with a 3" aluminum cap marked as shown, from which:

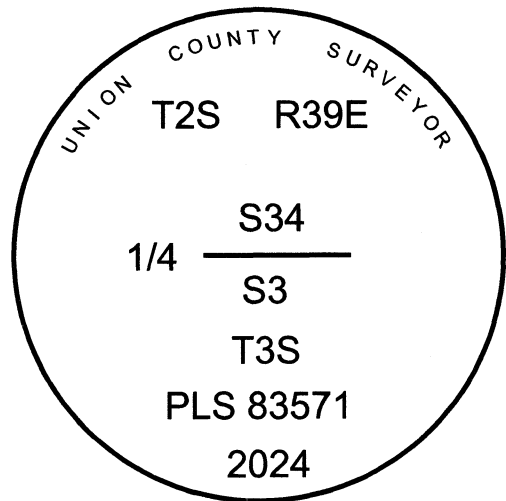
NEW BEARING OBJECTS:

A 5/8" x 15" iron pin bears North 23°49' East, a dist. of 17.31 feet, with 1 1/2" aluminum cap marked UNION COUNTY SURVEYOR NE RP.

A 5/8" x 15" iron pin bears South 45°06' East, a dist. of 10.70 feet, with 1 1/2" aluminum cap marked UNION COUNTY SURVEYOR SE RP.

A 5/8" x 15" iron pin bears South 43°58' West, a dist. of 9.00 feet, with 1 1/2" aluminum cap marked UNION COUNTY SURVEYOR SW RP.

A 5/8" x 15" iron pin bears North 86°37' West, a dist. of 20.28 feet, with 1 1/2" aluminum cap marked UNION COUNTY SURVEYOR NW RP.



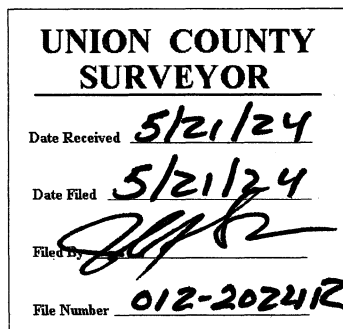
Falls approx. 5' west of intersection of field lines bearing North/South/West and under an East/West power line. References are all approx. 18" below ground in cultivated fields.

I hereby certify that the corner was monumented on May 10th, 2024.

Witnesses: Kyle Tucker



Renewal Date: June 30, 2025



I used a Leica GS18 with RTK in the establishment of the new monument. Basis of Bearing is as per Survey Number 017-2024. Bearings and distances are to the center of the aluminum caps.

HORIZONTAL CONTROL DATA

UNION COUNTY, OREGON

OREGON STATE PLANE, NORTH ZONE (3601)

STA NAME: 2024012

QUARTER CORNER COMMON TO SECTIONS 3 AND 34

TWP. 2/3 S RGE. 39 E

GEODETIC COORD: NAD 83(91)

DATE TIED: May 13, 2024

LAT: 45 ° 20 ' 25.55670 " N

SURVEYOR: JEFFREY S. HSU
OPLS 83571

LONG: 117 ° 55 ' 19.50959 " W

FIRM: BAGETT, GRIFFITH, & BLACKMAN
2006 ADAMS AVENUE
LAGRANDE, OR 97850
(541) 963-6092

SP. COOR: NAD 83(91)

N: 620783.087 INT FT.

E: 8864824.244 INT FT.

TYPE: GPS

THETA: 1 ° 49 ' 41.6 "

ORDER: SECOND CLASS: 1

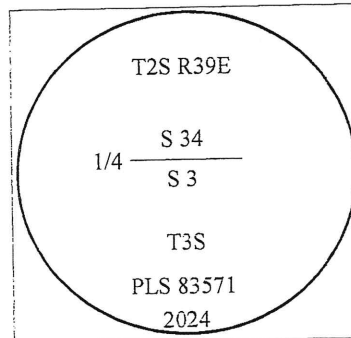
SCALE FACTOR: 0.999899062

ELEV: 2693.15 US FT.

ELEV: DATUM: NGVD 29

COMMENTS:

2 1/2" aluminum pipe with 3" aluminum cap



REGISTERED
PROFESSIONAL
LAND SURVEYOR

OREGON
June 2, 2010
JEFFREY S. HSU
83571

Renewal Date: June 30, 2025

1 METER = 3.2808333333... US FEET = 39.37 INCHES

1 METER = 3.280839895 INT'L FEET OR 1 INCH = 2.54 CM

TO CALCULATE ELEVATION FACTOR (IN THE NORTH AMERICAN CONTINENT)

DIVIDE 20,906,000 BY (20,906,000 + ELLIPSOID ELEV. IN FEET)

GEOID MODEL : 2012B

