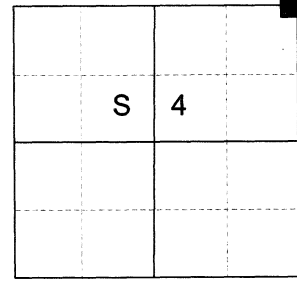


CERTIFIED RECORD OF LAND CORNER MONUMENTATION

HISTORY OF ORIGINAL CORNER ESTABLISHED:

Corner established by Timothy W. Davenport under GLO Contract No. 102, dated July 20th, 1863. Surveyor General notes state: Set post corner to secs. 3, 4, 33, & 34, from which:
A Willow 4 inch in dia. bears NE 10 lks dist.
A Willow 4 inch in dia. bears SW 10 lks dist.
Mound not practicable and no trees of sufficient size in being distance

T 3 S R 39 E A-13



Corner found in 1888 by J.W. Kimbrell, County Surveyor, in Old Book Survey No. 50, Pg. 99. Surveyor notes state: Intersect 44 lks North of corner to sec 3=4=33&34 from which:
A Willow 4 inches diameter bears NE 10 lks.
A Willow 4 inches diameter bears SW 10 lks.

DESCRIPTION OF CORNER EVIDENCE FOUND:

Found a 2 1/2" iron pipe, 6" below ground and firmly set, with rolled top edge at the intersection of fields.

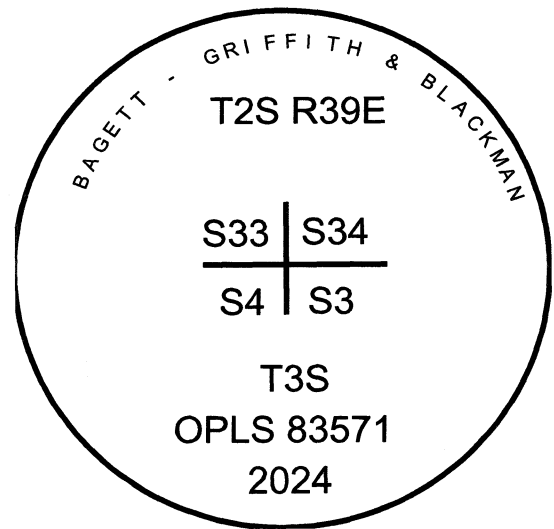
SEE SURVEY NUMBER 017-2024

DESCRIPTION OF MONUMENT AND ACCESSORIES I ESTABLISHED TO MONUMENT THE ORIGINAL LOCATION OF THIS CORNER:

At center of found iron pipe, I set a 5/8" x 30" iron pin, 36" in the ground and 30" into the pipe, with a 2 1/2" aluminum cap marked as shown, from which:

NEW BEARING OBJECTS:

A 12" utility pole with communication and weather equipment bears North 13°43' East, a dist. of 59.28 feet, which falls approx. 4 ft. East of the SE corner of a pump house.
A 5/8" x 15" iron pin bears South 85°32' East, a dist. of 70.67 feet, with 1 1/2" aluminum cap marked UNION COUNTY SURVEYOR SE RP.
A 5/8" x 15" iron pin bears South 48°07' West, a dist. of 20.39 feet, with 1 1/2" aluminum cap marked UNION COUNTY SURVEYOR SW RP.
A 5/8" x 15" iron pin bears North 46°43' West, a dist. of 21.91 feet, with 1 1/2" aluminum cap marked UNION COUNTY SURVEYOR NW RP.



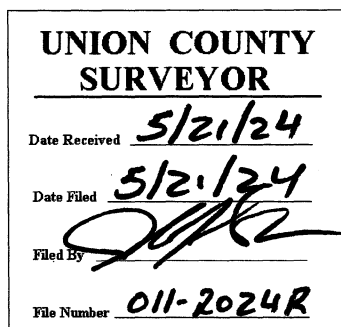
Falls in intersection of cultivated fields to South and West and on edge of historical slough to the Northeast. West references are approx. 18" below ground.

I hereby certify that the corner was monumented on May 10th, 2024.

Witnesses: Kyle Tucker and Rusty Gulzow



Renewal Date: June 30, 2025



I used a Leica GS18 with RTK in the establishment of the new monument. Basis of Bearing is as per Survey Number 017-2024. Bearings and distances are to the center of the aluminum caps or to the center of a brass washer marked "OPLS 83571" in the power pole for bearing and a 60D nail for distance.

HORIZONTAL CONTROL DATA

UNION COUNTY, OREGON

OREGON STATE PLANE, NORTH ZONE (3601)

STA NAME: 2024008

SECTION CORNER COMMON TO SECTIONS 3, 4, 33, AND 34

TWP. 2/3 S RGE. 39 E

GEODETIC COORD: NAD 83(91)

DATE TIED: May 10, 2024

LAT: 45 ° 20 ' 25.67431 " N

SURVEYOR: JEFFREY S. HSU
OPLS 83571

LONG: 117 ° 55 ' 56.91275 " W

FIRM: BAGETT, GRIFFITH, & BLACKMAN
2006 ADAMS AVENUE
LAGRANDE, OR 97850
(541) 963-6092

SP. COOR: NAD 83(91)

N: 620709.936 INT FT.

E: 8862153.788 INT FT.

TYPE: GPS

THETA: 1 ° 49 ' 15.1 "

ORDER: SECOND CLASS: 1

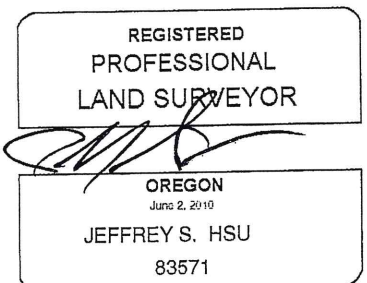
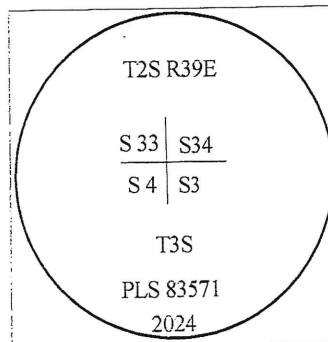
SCALE FACTOR: 0.999899064

ELEV: 2689.56 US FT.

ELEV: DATUM: NGVD 29

COMMENTS:

5/8" iron pin with 2 1/2" aluminum cap
set in 2 1/2" iron pipe



Renewal Date: June 30, 2025

1 METER = 3.2808333333... US FEET = 39.37 INCHES

1 METER = 3.280839895 INT'L FEET OR 1 INCH = 2.54 CM

TO CALCULATE ELEVATION FACTOR (IN THE NORTH AMERICAN CONTINENT)

DIVIDE 20,906,000 BY (20,906,000 + ELLIPSOID ELEV. IN FEET)

GEOID MODEL : 2012B

