

**CERTIFIED RECORD OF LAND CORNER MONUMENTATION**

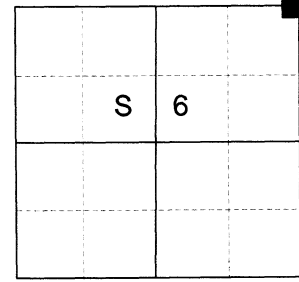
**HISTORY OF ORIGINAL CORNER ESTABLISHED:**

Corner established by Timothy W. Davenport under GLO Contract No. 102, dated July 20th, 1863. Surveyor General notes state: Set post corner to secs. 5,6,31,+32 made mound of Earth and drove charred stake as per inst.

Corner found in 1888 by J.W. Kimbrell, County Surveyor, in Old Book Survey No. 50, Pg. 98. Survey Record shows "Stone 19"x10"x5"

Oregon State Highway Department strip map 5B-2-7 (1935) and 6B-13-20 (1944) shows a "rock" at the corner position.

T 3 S R 39 E A-05



**DESCRIPTION OF CORNER EVIDENCE FOUND:**

Found a stone 19"x12"x5", 18" below ground, with 4 notches on one face and "X" on another, with fence post alongside the South, all falling within in a cultivated field.

SEE SURVEY NUMBER 017-2024

**DESCRIPTION OF MONUMENT AND ACCESSORIES I ESTABLISHED TO MONUMENT THE ORIGINAL LOCATION OF THIS CORNER:**

At pos. of found stone, I set a 5/8" x 30" iron pin, 66" in the ground (due to an actively cultivated field), with a 2 1/2" aluminum cap marked as shown, from which:

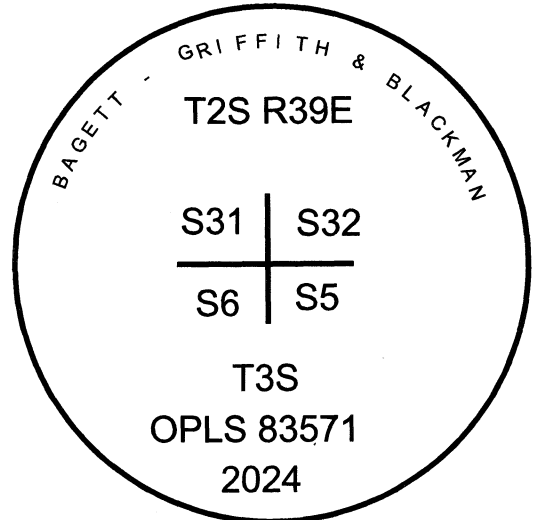
**NEW BEARING OBJECTS:**

A 5/8" x 15" iron pin bears North 46°33' East, a dist. of 25.02 feet, with 1 1/2" aluminum cap marked UNION COUNTY SURVEYOR NE RP.

A 5/8" x 15" iron pin bears South 46°06' East, a dist. of 19.25 feet, with 1 1/2" aluminum cap marked UNION COUNTY SURVEYOR SE RP.

A 5/8" x 15" iron pin bears South 39°41' West, a dist. of 17.91 feet, with 1 1/2" aluminum cap marked UNION COUNTY SURVEYOR SW RP.

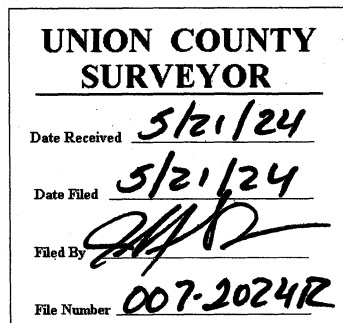
A 5/8" x 15" iron pin bears North 46°10' West, a dist. of 28.94 feet, with 1 1/2" aluminum cap marked UNION COUNTY SURVEYOR NW RP.



Corner is in a cultivated field and current farmer states he will be farming through this corner this year. Corner buried to avoid interference with agricultural activities.

I hereby certify that the corner was monumented on May 8th, 2024.

Witnesses: Kyle Tucker



I used a Leica GS18 with RTK in the establishment of the new monument. Basis of Bearing is as per Survey Number 017-2024. Bearings and distances are to the center of the aluminum caps.

# HORIZONTAL CONTROL DATA

## UNION COUNTY, OREGON

### OREGON STATE PLANE, NORTH ZONE (3601)

STA NAME: 2024007

SECTION CORNER COMMON TO SECTIONS 5, 6, 31, AND 32

TWP. 2/3 S RGE. 39 E

GEODETIC COORD: NAD 83(91)

DATE TIED: May 8, 2024

LAT: 45 ° 20 ' 25.59777 " N

SURVEYOR: JEFFREY S. HSU  
OPLS 83571

LONG: 117 ° 58 ' 25.43353 " W

FIRM: BAGETT, GRIFFITH, & BLACKMAN  
2006 ADAMS AVENUE  
LAGRANDE, OR 97850  
(541) 963-6092

SP. COOR: NAD 83(91)

N: 620367.839 INT FT.

E: 8851551.564 INT FT.

TYPE: GPS

THETA: 1 ° 47 ' 29.7 "

ORDER: SECOND CLASS: 1

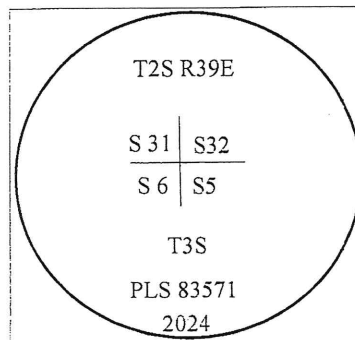
SCALE FACTOR: 0.999899063

ELEV: 2695.12 US FT.

ELEV: DATUM: NGVD 29

**COMMENTS:**

5/8" iron pin with 2 1/2" aluminum cap  
buried in cultivated field



Renewal Date: June 30, 2025

1 METER = 3.2808333333... US FEET = 39.37 INCHES

1 METER = 3.280839895 INT'L FEET OR 1 INCH = 2.54 CM

TO CALCULATE ELEVATION FACTOR ( IN THE NORTH AMERICAN CONTINENT)

DIVIDE 20,906,000 BY (20,906,000 + ELLIPSOID ELEV. IN FEET)

GEOID MODEL : 2012B

