

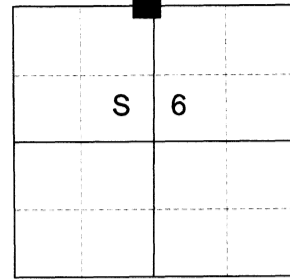
CERTIFIED RECORD OF LAND CORNER MONUMENTATION

HISTORY OF ORIGINAL CORNER ESTABLISHED:

Corner established by Timothy W. Davenport under GLO Contract No. 102, dated July 20th, 1863. Surveyor General notes state: Set qr. sec. post made mound of Earth and drove charred stake as per inst.

Corner depicted on Oregon State Highway Department strip map 5B-2-7 (1935) and strip map 6B-13-20 (1944) where it shows a "fence cor." at the corner position.

T 3 S R 39 E A-03



DESCRIPTION OF CORNER EVIDENCE FOUND:

I make a search at the position as stated on ODOT strip map and found a broken off fence post, 6" below ground in cultivated field. Upon excavation I find wood remnants from a post approx. 18-24" below ground. I accept this as original corner evidence.

SEE SURVEY NUMBER 017-2024

DESCRIPTION OF MONUMENT AND ACCESSORIES I ESTABLISHED TO MONUMENT THE ORIGINAL LOCATION OF THIS CORNER:

At position of found fence post, I set a 5/8" x 30" iron pin, 66" in the ground, with a 2 1/2" aluminum cap marked as shown, from which:

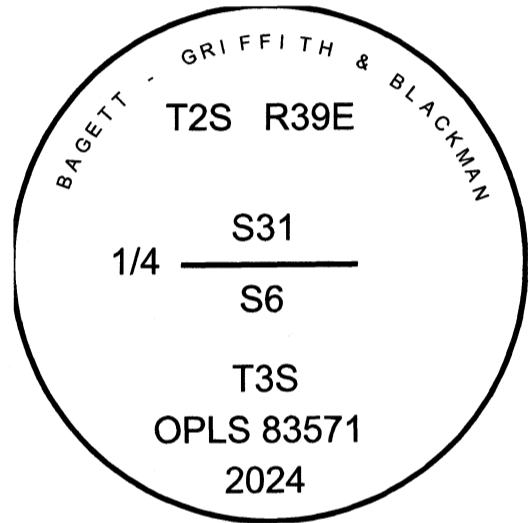
NEW BEARING OBJECTS:

A 5/8" iron pin bears North 39°12' East, a dist. of 21.95 feet, with 1 1/2" aluminum cap marked NE RP.

A 5/8" iron pin bears South 17°29' East, a dist. of 20.21 feet, with 1 1/2" aluminum cap marked SE RP.

A 5/8" x 15" iron pin bears South 47°58' West, a dist. of 25.54 feet, with 1 1/2" aluminum cap marked SW RP.

A 5/8" x 15" iron pin bears North 40°30' West, a dist. of 27.50 feet, with 1 1/2" aluminum cap marked NW RP.



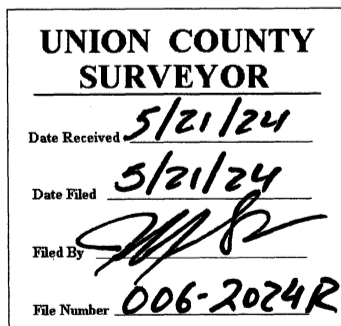
Corner is in a cultivated field and current farmer states he will be farming through this corner this year. Monument buried to avoid interference with farming activities.

I hereby certify that the corner was monumented on May 8th, 2024.

Witnesses: Kyle Tucker



Renewal Date: June 30, 2025



I used a Leica GS18 with RTK in the establishment of the new monument. Basis of Bearing is as per Survey Number 017-2024. Bearings and distances are to the center of the aluminum caps.

HORIZONTAL CONTROL DATA

UNION COUNTY, OREGON

OREGON STATE PLANE, NORTH ZONE (3601)

STA NAME: 2024006

QUARTER CORNER COMMON TO SECTIONS 6 AND 31

TWP. 2/3 S RGE. 39 E

GEODETIC COORD: NAD 83(91)

DATE TIED: May 8, 2024

LAT: 45 ° 20 ' 25.61685 " N

SURVEYOR: JEFFREY S. HSU
OPLS 83571

LONG: 117 ° 59 ' 2.59727 " W

FIRM: BAGETT, GRIFFITH, & BLACKMAN
2006 ADAMS AVENUE
LAGRANDE, OR 97850
(541) 963-6092

SP. COOR: NAD 83(91)

N: 620286.955 INT FT.

E: 8848898.465 INT FT.

TYPE: GPS

THETA: 1 ° 47 ' 3.4 "

ORDER: SECOND CLASS: 1

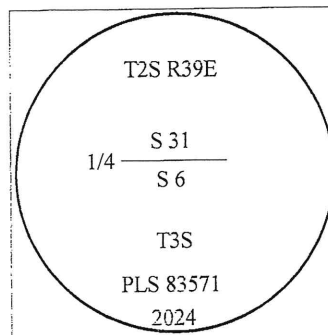
SCALE FACTOR: 0.999899063

ELEV: 2695.97 US FT.

ELEV: DATUM: NGVD 29

COMMENTS:

5/8" iron pin with 2 1/2" aluminum cap
buried in cultivated field



REGISTERED
PROFESSIONAL
LAND SURVEYOR

OREGON
June 2, 2010
JEFFREY S. HSU
83571

Renewal Date: June 30, 2025

1 METER = 3.2808333333... US FEET = 39.37 INCHES

1 METER = 3.280839895 INT'L FEET OR 1 INCH = 2.54 CM

TO CALCULATE ELEVATION FACTOR (IN THE NORTH AMERICAN CONTINENT)

DIVIDE 20,906,000 BY (20,906,000 + ELLIPSOID ELEV. IN FEET)

GEOID MODEL : 2012B

