

CERTIFIED RECORD OF LAND CORNER MONUMENTATION

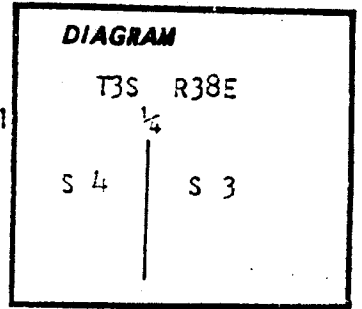
C-13

History of original corner establishment:

Corner originally established by David T. Thompson under GLO contract number 103, dated September 3, 1863. Surveyor General record states:

Set post for 1/4 Sec corner in mound of earth with pits, trench, charred stake as per instructions

Survey number 1-73 by James G. Voelz and Survey number 21-76 by Duane I. Griffith both call finding a marked stone for the 1/4 corner.



Description of corner evidence found:

Found basalt stone 23x13x9 inches, marked 1/4 with charred wood alongside.

Description of monument and accessories I established to perpetuate the original location of this corner:

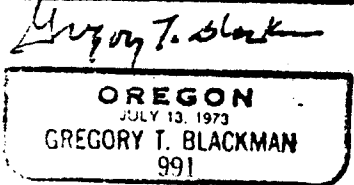
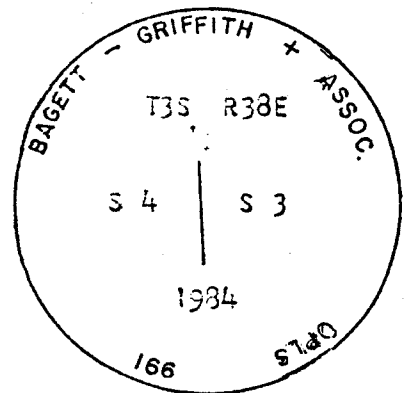
In place of stone, I set a 2 1/2 inch x 30 inch aluminum pipe with aluminum cap marked as shown, 30 inches in the ground. I buried the found marked stone South end alongside of the aluminum monument.

I placed location tag on findpost and found north of the aluminum monument.

Corner set April 2, 1984

Witness: Rick Robinson

See survey number 1-34



UNION COUNTY  
SURVEYOR

---

Date Received 4-12-84

Date Filed 4-19-84

By G. LANGLITZ DEPUTY

File No. 840-84R

Office of..... County of.....

State of....., I hereby certify that the within instrument was filed in this office for record on the..... day of....., 19.....

(COUNTY OFFICIAL)

(DEPUTY)

# HORIZONTAL CONTROL DATA

OREGON STATE PLANE, NORTH ZONE (3601)

LaGRANDE & ISLAND CITY, UNION COUNTY OREGON

STA. NAME: 9621

QUARTER CORNER TO: 4 \ 3

GEODETIC COOR: NAD 83(91)

TWP.3S, RGE.38E, W.M.

LAT: 45°19'58.92133" N

DATE FD.: MARCH, 1996

LONG: 118°03'20.28959" W

SURVEYOR: WALTER L. CASWELL  
PLS 737

SP. COOR: NAD 83(91)

FIRM: EAGLE GPS SURVEY CORP  
6110 S.W. LOMBARD AVE.  
BEAVERTON, OR. 97008  
(503) 643-1073

N: 617019.684 INT.FT.

E: 8830583.866 INT.FT.

THETA: 1°44'00.631"

TYPE: GPS

SCALE FACTOR: 0.999898684

ORDER: SECOND CLASS: 2

ELEV: 2739.811 US.FT.

ELEV. DATUM: NGVD 29

\*\*\*\*\*

DIRECTIONS "TO REACH"

*AMGNDGD*

REGISTERED  
PROFESSIONAL  
LAND SURVEYOR

*Walter L. Caswell*

OREGON  
JULY 8, 1966  
WALTER L. CASWELL  
737

EXPIRES 12/31/97

1 meter = 3.280833... U.S. Feet = 39.37 inches exactly  
1 meter = 3.280839895 Intl. Feet or 1 inch = 2.54cm. exactly  
To Calculate Elevation Factor (in the North American Continent)  
Divide 20,906,000 by (20,906,000 + Ellipsoid Elev. in Feet)

JOB 96-007

SHEET 35 OF 66

**HORIZONTAL CONTROL DATA**  
**UNION COUNTY, OREGON**  
**OREGON STATE PLANE, NORTH ZONE (3601)**

STA NAME: 9621

QUARTER COMMON TO: 3&4

TWP. 3 S. RGE. 38 E. GEODETIC COORD: NAD 83(91)

DATE TIED: MARCH 1996 LAT: 45 ° 19 ' 59.13807 " N

SURVEYOR: WALTER L. CASWELL LONG: 118 ° 3 ' 20.38632 " W  
PLS 737

FIRM: EAGLE GPS SURVEY CORP SP. COOR: NAD 83(91)

6110 SW LOMBARD AVE. N: 617041.415 INT FT.

BEAVERTON, OR. 97008-4730  
(503) 643-1073 E: 8830576.296 INT FT.

TYPE: GPS THETA: 1 ° 44 ' 0.56297551 "

ORDER: SECOND CLASS: 2 SCALE FACTOR: 0.9998986873

ELEV: 2739.81 US FT.

ELEV: DATUM: NGVD 29

**CRUISE  
RESET**

**COMMENTS:**

This sheet has been edited. The original coordinates came from an eccentric station and the convergence angle was applied the wrong way.

REGISTERED  
PROFESSIONAL  
LAND SURVEYOR  
*Gregory T. Blackman*  
OREGON  
JULY 19, 1973  
**GREGORY T. BLACKMAN**  
991

Renewal Date: Dec. 31, 2001

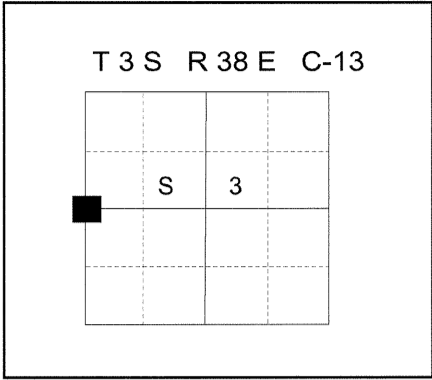
1 METER = 3.2808333333... US FEET = 39.37 INCHES  
1 METER = 3.280839895 INT'L FEET OR 1 INCH = 2.54 CM  
TO CALCULATE ELEVATION FACTOR ( IN THE NORTH AMERICAN CONTINENT )  
DIVIDE 20,906,000 BY (20,906,000 + ELLIPSOID ELEV. IN FEET)

**UNION COUNTY SURVEYOR**

**CERTIFIED RECORD OF LAND CORNER MONUMENTATION**

**History of original corner establishment:**

Corner originally established by David T. Thompson under GLO contract Number 103, dated September 3, 1863. Surveyor General record states: Set post for 1/4 sec corner in mound of earth with pits, trench, charred stake as per instructions. Survey number 1-73 by James G. Voelz and Survey Number 21-76 by Duane I Griffith both call finding a marked stone for the 1/4 corner. Monumentation Record 840-84R states setting a 2½" x 30" aluminum pipe monument in place of stone and buried the found stone South of the monument. Survey Nos. 5-93, 027-2001, 014-2003, 006-2007, and Partition Plat Nos. 1992-14, 1992-22, 1994-05, 1994-27, 1997-22, 1998-15, 1999-008, 1999-009, 2000-26, 2001-007, 2001-013, 2002-005, 2003-0006, 20070013T, 20100009T, 20130007T, and 20150001T calls finding aluminum monument as per survey 1-84, with those surveys and partitions after Minor Partition Plat 1998-15 calling the monument either disturbed or out of position.



**DESCRIPTION OF CORNER EVIDENCE FOUND:**

Found 2 ½" aluminum monument out of position as called in previous surveys, 6" under new paving for Mulholland Drive.

See Survey Number 053-2015

**Description of monument and accessories I established to perpetuate the original location of this corner:**

At the TRUE corner position as documented by the above listed surveys and partitions and as detailed on Survey Number 053-2015, I set a 5/8" x 30" "copper clad" iron pin with 2½" brass cap marked as shown below, 33" in the ground, in a monument box from which:

**New References:**

A 5/8"x30" iron pin with 1½" aluminum cap bears North 7°42' East, 25.32 feet, marked UNION COUNTY SURVEYOR NE RP.

A 5/8"x30" iron pin with 1½" aluminum cap bears South 0°58' East, 29.75 feet, marked APA OR2849 WA41295

A brass screw with brass washer marked OPLS 2219 bears South 36°17' West, 22.52 feet, set in existing concrete curb

A brass screw with brass washer marked OPLS 2219 bears North 36°51' West, 23.65 feet, set in existing concrete curb

I removed the disturbed 2½" monument.

I hereby certify that the corner was perpetuated on August 24, 2015

Witness: Thomas J. Kopp

REGISTERED  
PROFESSIONAL  
LAND SURVEYOR  
*[Signature]*  
OREGON  
July 17, 1986  
RICK G. ROBINSON  
2219

Renewal Date: December 31, 2016

UNION COUNTY SURVEYOR  
T3S R38E  
1/4  
S 4 | S 3  
2015  
OPLS 2219

UNION COUNTY  
SURVEYOR  
Date Received 8/31/15  
Date Filed 8/31/15  
Filed By *[Signature]*  
File Number 135-2015 R

I used a Leica Viva GS14 GPS unit in the establishment of the new accessories. I used the same basis of bearing as Union County Survey Number 053-2015.

**HORIZONTAL CONTROL DATA**  
**UNION COUNTY, OREGON**  
**OREGON STATE PLANE, NORTH ZONE (3601)**

STA NAME: 201523

1/4 SECTION CORNER COMMON TO SECTIONS 3 and 4

TWP. 3 S. RGE. 38 E.

GEODETIC COORD: NAD 83(91)

DATE TIED: August 24, 2015

LAT: 45 ° 19 ' 59.13742 " N

SURVEYOR: RICK G. ROBINSON  
OPLS 2219

LONG: 118 ° 3 ' 20.39421 " W

FIRM: BAGETT, GRIFFITH, & BLACKMAN  
2006 ADAMS AVENUE  
LAGRANDE, OR 97850  
(541) 963-6092

SP. COOR: NAD 83(91)

N: 617041.332 INT FT.

E: 8830575.735 INT FT.

TYPE: GPS

THETA: 1 ° 44 ' 0.55737942 "

ORDER: SECOND CLASS: 1

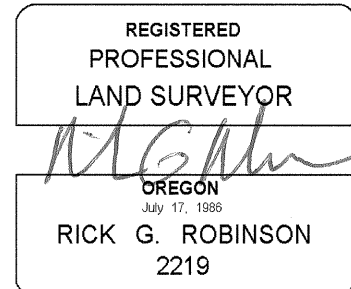
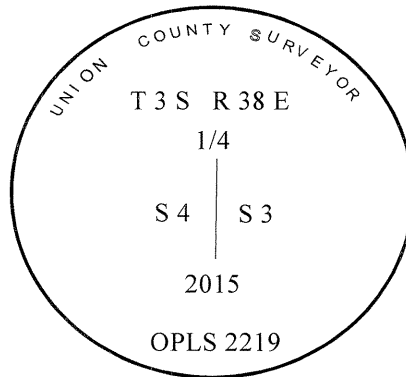
SCALE FACTOR: 0.9998986873

ELEV: 2740.52 US FT.

ELEV: DATUM: NGVD 29

COMMENTS:

2 1/2" copper clad brass cap monument  
in water valve box in centerline of  
Mulholland Drive



Renewal Date: December 31, 2016

1 METER = 3.2808333333... US FEET = 39.37 INCHES

1 METER = 3.280839895 INT'L FEET OR 1 INCH = 2.54 CM

TO CALCULATE ELEVATION FACTOR ( IN THE NORTH AMERICAN CONTINENT)

DIVIDE 20,906,000 BY (20,906,000 + ELLIPSOID ELEV. IN FEET)