

UNION COUNTY SURVEYOR
CERTIFIED RECORD OF LAND CORNER MONUMENTATION

HISTORY OF ORIGINAL CORNER ESTABLISHMENT:

Old Book Survey 207 Page 384 by J.B. Howland, dated T 3 S R 38 E C - 11
29 March, 1915 states set iron pin.

Survey No. 25-84 states found 1" iron pipe

Survey No. 036-2002 states found 1" iron pipe shown
on Survey No. 25-84

Bearing Objects:

Set rebar with 1 ½" aluminum cap, marked OREGON
DEPT OF TRANS NE RP, which bears N 44°42'54" E,
25.555 meters (83.84 ft.)

Set rebar with 1 ½" aluminum cap, marked OREGON
DEPT OF TRANS SE RP, which bears S 52°07'06" E, 29.727 meters (97.53 ft.)

Set rebar with 1 ½" aluminum cap, marked OREGON DEPT OF TRANS SW RP, which
bears S 46°56'44" W, 3.939 meters (12.92 ft.)

Set rebar with 1 ½" aluminum cap, marked OREGON DEPT OF TRANS NW RP, which
bears N 55°06'21" W, 3.676 meters (12.06 ft.)

Bearings are Grid for ODOT

No record of subsequent monumentation found in Union County survey records.

DESCRIPTION OF CORNER EVIDENCE FOUND:

Found 1" iron pipe and ODOT references

See Survey No. 036-2002

DESCRIPTION OF MONUMENT AND ACCESSORIES I ESTABLISHED

TO PERPETUATE THE ORIGINAL LOCATION OF THIS CORNER:

At position established by Survey No. 036-2002, I set a 2 ½" x 30" copper
clad monument, marked as shown below, 38" in the ground, from which:

A 5/8" x 30" iron pin with 1 ½" aluminum cap bears N 46°31'E, a distance of
83.93 feet, marked OREGON DEPT OF TRANS NE RP.

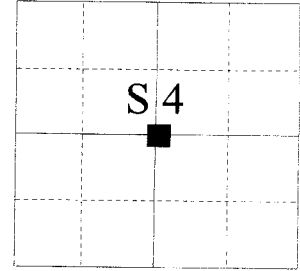
A 5/8" x 30" iron pin with 1 ½" aluminum cap bears S 40°22'E, a distance of
97.49 feet, marked OREGON DEPT OF TRANS SE RP.

A 5/8" x 30" iron pin with 1 ½" aluminum cap bears S 48°22'W, a distance of
12.83 feet, marked OREGON DEPT OF TRANS SW RP.

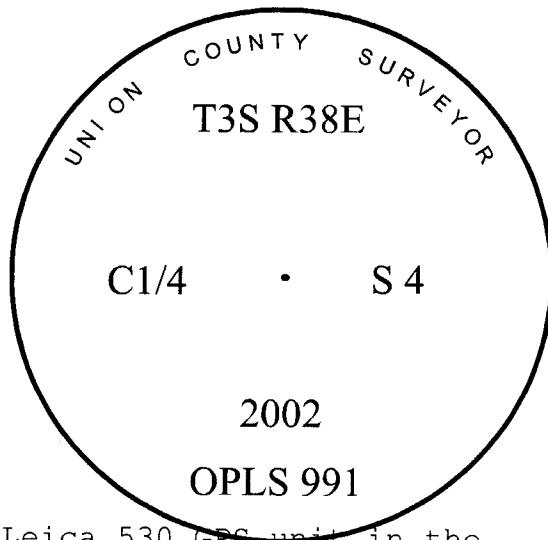
A 5/8" x 30" iron pin with 1 ½" aluminum cap bears N 53°23'W, a distance of
12.04 feet, marked OREGON DEPT OF TRANS NW RP.

I hereby certify that the corner was monumented on December 17, 2002.

Witness: Norbert Volny and Gregory T. Blackman, Jr.



UNION COUNTY SURVEYOR	
Date Received	<u>3/3/03</u>
Date Filed	<u>3/19/03</u>
Filed By	<u>Gregory T. Black</u>
File Number	<u>014-2003 R</u>



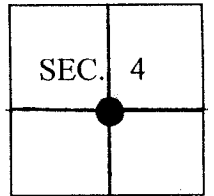
REGISTERED PROFESSIONAL LAND SURVEYOR
<u>Gregory T. Black</u> OREGON JULY 13, 1973
GREGORY T. BLACKMAN 991

I used a Leica 530 GPS unit in the establishment of the new accessories. The Basis of Bearing is the record forward bearing between Union County GPS Stations 200215 and 9220 compensated for convergence angle. The distances are to the center of a 5/8"x30" iron pin with 1 ½" brass cap.

Renewal Date: December 31, 2003

CERTIFIED RECORD OF LAND CORNER MONUMENTATION

C-11
T 3 S R 38 E



History of original corner establishment:

Corner was originally set in March of 1915 as recorded by J.B. Howland, County Surveyor, on page 364 of OLD BOOK OF SURVEYS, Union County Oregon.

Document indicates as setting a combination of iron pins and 1 1/2" iron pipes, with an iron pin being set for this corner. There is no mention of having set any references with this corner.

Description of corner evidence found:

A 1" iron pipe was found at this corner location and not an iron pin as indicated being set from original notes. Earlier recorded surveys also indicate as finding a 1" iron pipe. No subsequent references were shown as being set on said recorded surveys.

Description of monument and accessories established to perpetuate the original location of this corner:

Monument is currently situated within a rockied landscape area and was found at a depth of approximately 1.5 – 2 feet below rockied surface. Cutting off the bottom of a plastic concrete cylinder mold, 6" in diameter, I then placed over the monument to serve as a temporary monument box.

From found 1" iron pipe I establish 4 reference monuments as follows:

Set rebar with 1 1/2" aluminum cap, "OREGON DEPT OF TRANS", stamped, "NE RP", which bears N 44° 42' 54" E, 25.555 meters (83.84 ft.).

Set rebar with 1 1/2" aluminum cap, "OREGON DEPT OF TRANS", stamped, "SE RP", which bears S 42° 07' 06" E, 29.727 meters (97.53 ft.).

Set rebar with 1 1/2" aluminum cap, "OREGON DEPT OF TRANS", stamped, "SW RP", which bears S 46° 56' 44" W, 3.939 meters (12.92 ft.).

Set rebar with 1 1/2" aluminum cap, "OREGON DEPT OF TRANS", stamped, "NW RP", Which bears N 55° 06' 21" W, 3.676 meters (12.06 ft.).

Conversion factor: 1.0 feet = 0.3048 meters

Bearings shown are based from horizontal control as established on CS 036-2002. Distances were measured using a Leica TCA 1800 Total Station and a software program, "Tie Distance".

UNION COUNTY SURVEYOR	
Date Received	<u>10/25/02</u>
Date Filed	<u>11/11/02</u>
By	<u>R. ROBINSON, Deputy</u>
Office of	File No. <u>037-2002R</u>

REGISTERED PROFESSIONAL LAND SURVEYOR
<i>C. B. Stockhoff</i>
OREGON JULY 10, 1996 CURTIS B. STOCKHOFF #2765

EXPIRES
JUNE 30, 2004

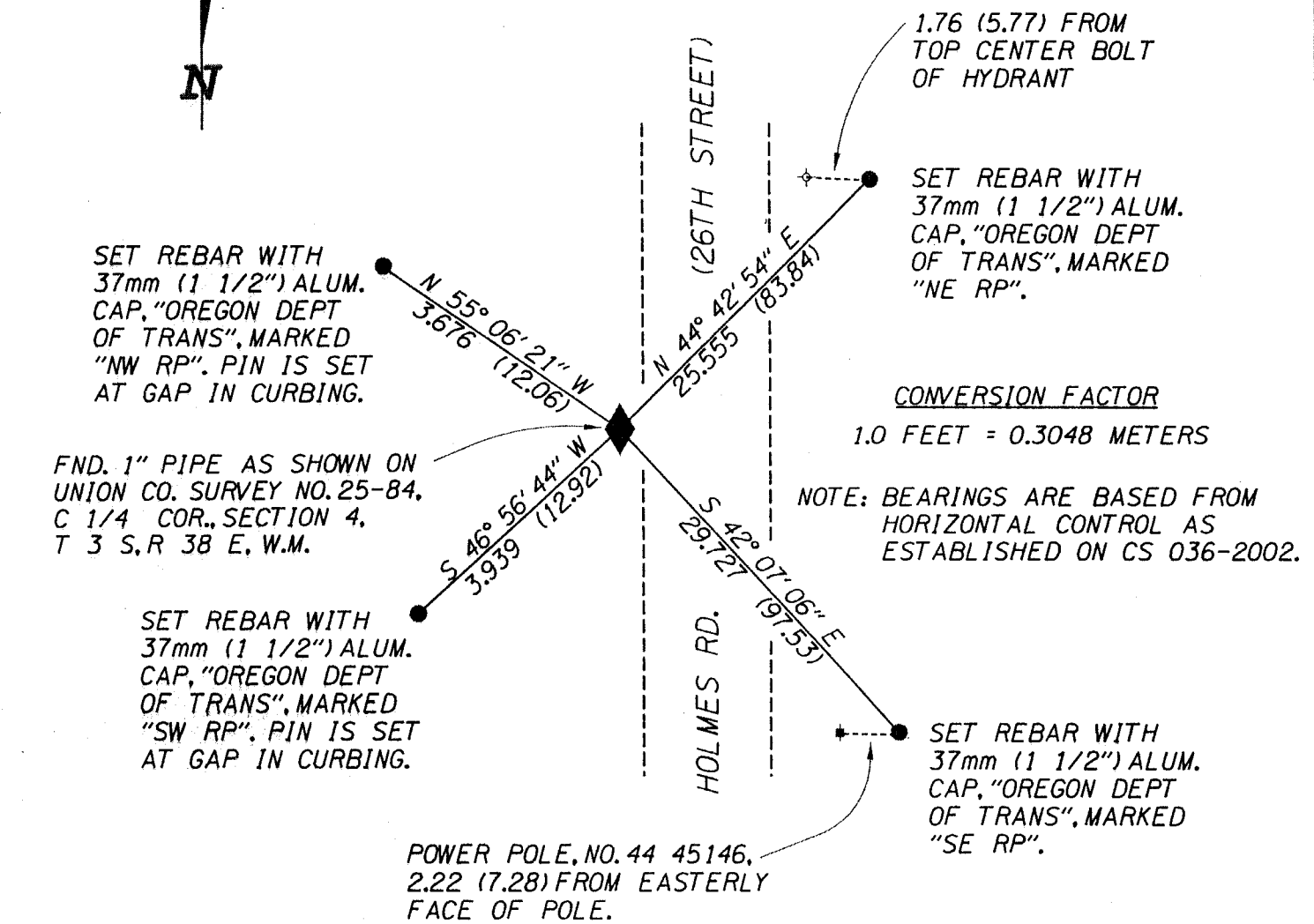
Office of _____ File No. 037-2002R County of _____

State of _____ I hereby certify that the within instrument was filed in this office for record on the

_____ day of _____, 19_____

_____ by _____
(County Official) (Deputy)

SKETCH
OF
SET REFERENCES
(NOT TO SCALE)



- () DISTANCE IN FEET
- * POWER POLE
- ◇ FIRE HYDRANT
- MONUMENT SET AS NOTED
- ◆ FND. MONUMENT AS NOTED
- EDGE OF PAVEMENT

**REGISTERED
PROFESSIONAL
LAND SURVEYOR**

Curtis B. Stockhoff

OREGON
JULY 10, 1998
CURTIS B. STOCKHOFF
#2765

SURVEY FOR OREGON DEPARTMENT OF TRANSPORTATION	
LOCATION: C 1/4 CORNER, SECTION 4, T 3 S, R 38 E, W.M., UNION COUNTY OREGON	
SURVEYED BY: CURTIS B. STOCKHOFF	DRAFTED BY: CURTIS B. STOCKHOFF
DATE SURVEYED: SEPTEMBER 20, 2002	SHEET 1 OF 1

EXPIRES JUNE 30, 2004

HORIZONTAL CONTROL DATA
UNION COUNTY, OREGON
OREGON STATE PLANE, NORTH ZONE (3601)

STA NAME: 200215

CENTER QUARTER SECTION 4

TWP. 3 S. RGE. 38 E.

GEODETIC COORD: NAD 83(91)

DATE TIED: JUNE 2002

LAT: 45 ° 19 ' 59.17401 " N

SURVEYOR: GREGORY T. BLACKMAN
OPLS 991

LONG: 118 ° 3 ' 57.00270 " W

FIRM: BAGETT, GRIFFITH, & BLACKMAN
2006 ADAMS AVENUE
LAGRANDE, OR 97850
(541) 963-6092

SP. COOR: NAD 83(91)

N: 616966.096 INT FT.

E: 8827961.803 INT FT.

TYPE: GPS

THETA: 1 ° 43 ' 34.595148 "

ORDER: SECOND CLASS: 1

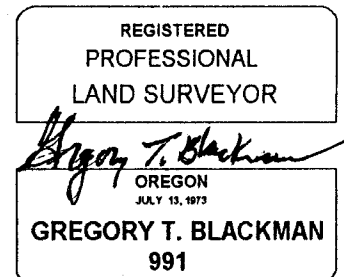
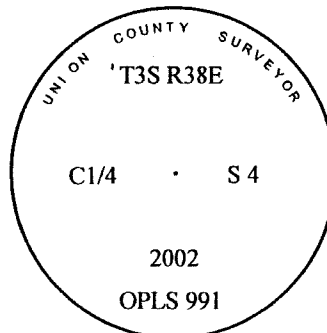
SCALE FACTOR: 0.9998986878

ELEV: 2754.85 US FT.

ELEV: DATUM: NGVD 29

COMMENTS:

Corner is a 2 1/2"x 5/8" copper clad monument buried in a planter in front of Eagle Truck Co. on the West edge of right of way of 26th Street.



Renewal Date: December 31, 2003

1 METER = 3.2808333333... US FEET = 39.37 INCHES

1 METER = 3.280839895 INT'L FEET OR 1 INCH = 2.54 CM

TO CALCULATE ELEVATION FACTOR (IN THE NORTH AMERICAN CONTINENT)

DIVIDE 20,906,000 BY (20,906,000 + ELLIPSOID ELEV. IN FEET)