

RENEWAL

Monument Set (Procedure and Description)

Monument Detail

N/A

N/A

UNION COUNTY SURVEYOR

Date Received \_\_\_\_\_

Date Filed \_\_\_\_\_

By \_\_\_\_\_

File No. 97-85 R

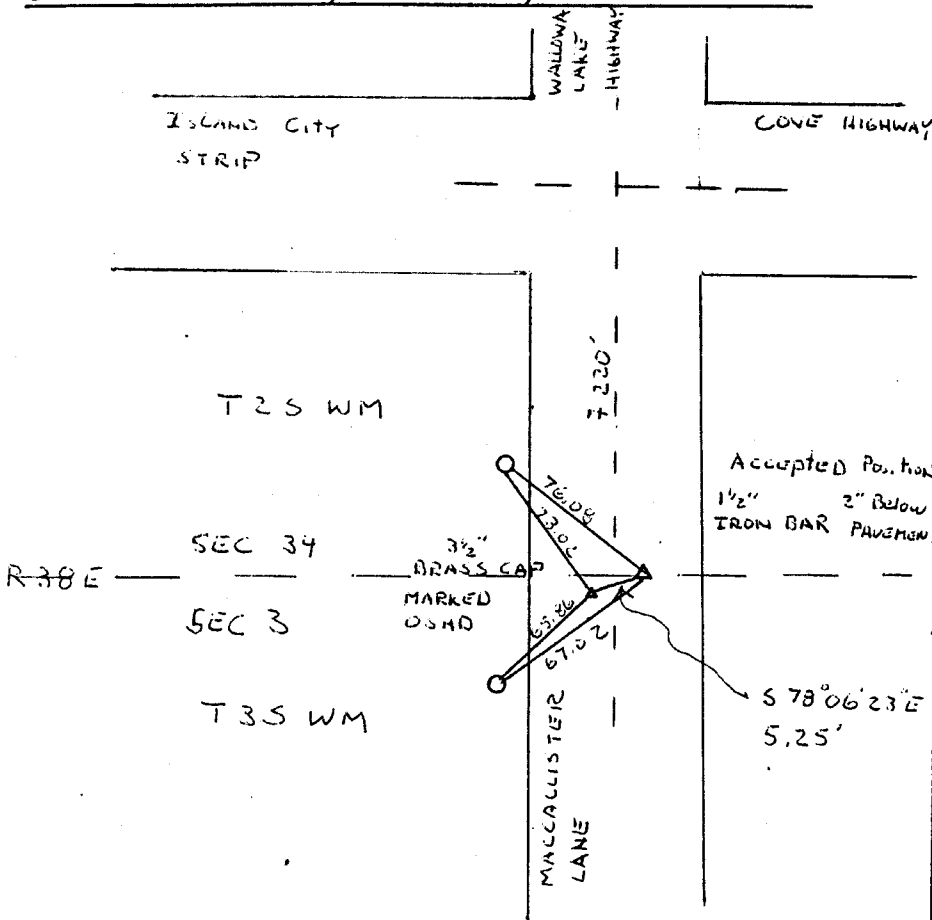
PAGE 2 OF 2

New Accessories

PK NAIL IN UTILITY POLE # 2571 76.08' TO 1 1/2" IRON BAR AND 73.02' TO BRASS CAP

PK NAIL IN UTILITY POLE # MOSS 67.02' TO 1 1/2" IRON BAR AND 65.86' TO BRASS CAP

Sketch of Monument, Accessories, and General Area



Location & Comments

7220' SOUTH OF 4 WAY INTERSECTION AT ISLAND CITY

Comp. Declin. \_\_\_\_\_

Agency OREGON STATE HIGHWAY DEPARTMENT

Party Chief JOHN OLTMAN

Notekeeper NED WILSON

Witnesses

JOHN OLTMAN

BOB BUTLER

NED WILSON

REGISTERED PROFESSIONAL LAND SURVEYOR

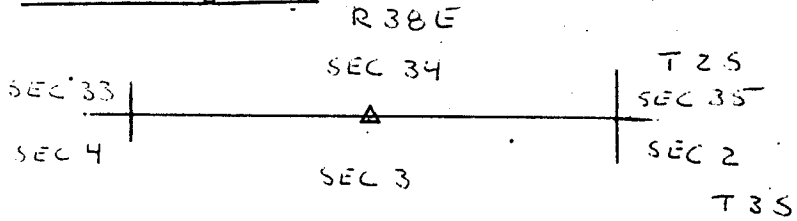
OREGON JULY 15, 1983 DUANE BERG 2043

GOVERNMENT CORNER RESTORATION FORM

Township T 3 S Range R 38 E Sec. 3 County UNION

State OREGON Date 8-16-85 No. \_\_\_\_\_

Corner Designation



- Condition Report Only
- Not Found
- Renewed
- Unrecorded
- Surveyed In
- Referenced Out

Previous Renewals

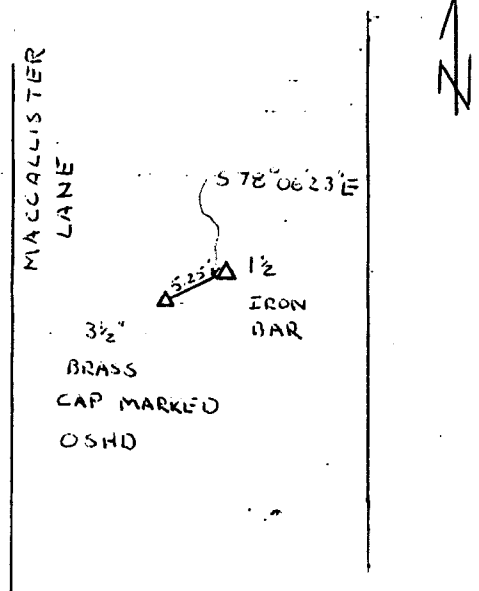
Monument(s) Found: (Condition and Source)

FOUND 1 1/4" IRON BAR 2" BELOW PAVEMENT OF MACCALLISTER LANE (ACCEPTED POSITION BY LOCAL SURVEYORS)

FOUND 3 1/2" BRASS CAP, 3 1/2" BELOW PAVEMENT OF MACCALLISTER LANE MARKED OSHD

FROM IRON BAR TO BRASS CAP N 78° 06' 23" W AT 5.25 FEET

MONUMENT DETAIL



Accessories Found:

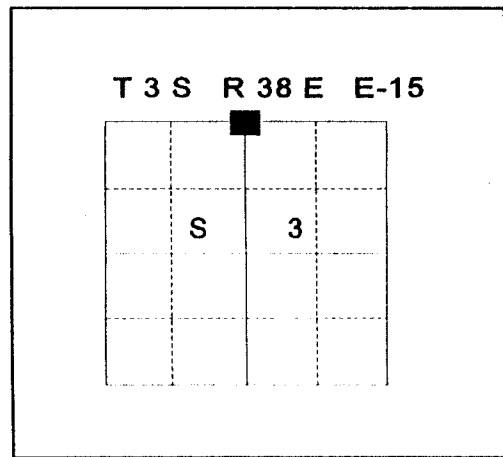
NONE FOUND

<b>UNION COUNTY SURVEYOR</b>	
Date Received	<u>10-23-85</u>
Date Filed	<u>10-29-85</u>
By	<u>G. LANGRISH, DEPUTY</u>
File No.	<u>97-85 R</u>

**UNION COUNTY SURVEYOR  
CERTIFIED RECORD OF LAND CORNER MONUMENTATION**

**History of original corner establishment:**

Corner was established by David T. Thompson under GLO contract Number 103, dated September 3, 1863. The Surveyor General states:  
Set post in mound of earth.



The history of this corner is extensive. See corner reference index filed with this monumentation sheet.

**Description of corner evidence found:**

Found 3/4" pipe with cap marked + as per surveys listed on corner reference index.

Found SW PK nail as per monumentation sheet 97-85R.

**Description of monument and accessories I established to perpetuate the original location of this corner:**

Replaced found monument with 2 1/2" brass cap on a 5/8" x 24" copper rod in monument box, from which:

**NEW BEARING OBJECTS:**

- A 5/8" x 30" rebar with 1 1/2" aluminum cap bears N58°E, 32.56 feet marked UNION COUNTY SURVEYOR NE RP.
- A 5/8" x 30" rebar with 1 1/2" aluminum cap bears S61°E, 35.69 feet marked UNION COUNTY SURVEYOR SE RP.
- A PK nail in power pole (as per monumentation sheet 97-85R) bears S28°W, 67.08 feet.
- A PK nail in power pole bears N26°W, 68.31 feet.

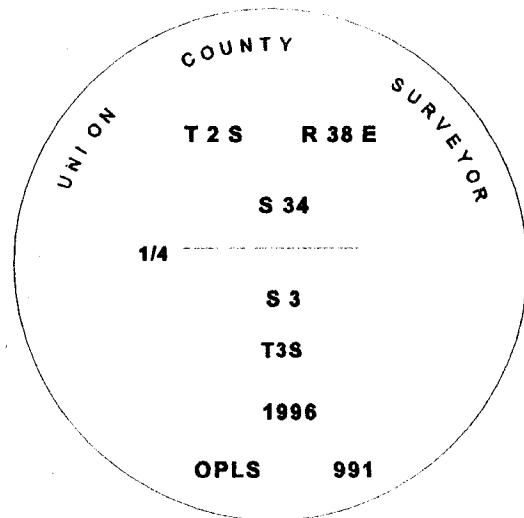
I hereby certify that the corner was monumented on March 25, 1996.  
Witness: Mark Durbin, Jeff Madsen

REGISTERED  
PROFESSIONAL  
LAND SURVEYOR

*Gregory T. Blackman*

OREGON  
JULY 13, 1973  
**GREGORY T. BLACKMAN**  
991

*Renewal Date: December, 31 1997*



**UNION COUNTY SURVEYOR**

Date Received 4-22-96

Date Filed 4-22-96

Filed By J. Paterson, Deputy

File Number 049-1996 R

I used a steel tape and magnetic compass in the establishment of the new accessories. I used 17° East declination.

# HORIZONTAL CONTROL DATA

OREGON STATE PLANE, NORTH ZONE (3601)

LaGRANDE & ISLAND CITY, UNION COUNTY OREGON

STA. NAME: 9616

QUARTER CORNER TO: 34 / 3

TWP.2 & 3S,RGE.38E, W.M.

DATE FD.: MARCH, 1996

SURVEYOR: WALTER L. CASWELL  
PLS 737

FIRM: EAGLE GPS SURVEY CORP  
6110 S.W. LOMBARD AVE.  
BEAVERTON, OR. 97008  
(503) 643-1073

TYPE: GPS

ORDER: SECOND CLASS: 2

GEODETIC COOR: NAD 83(91)

LAT: 45°20'25.04199" N

LONG: 118°02'43.07770" W

SP. COOR: NAD 83(91)

N: 619744.415 INT.FT.

E: 8833160.398 INT.FT.

THETA: 1°44'27.021"

SCALE FACTOR: 0.999899055

ELEV: 2738.508 US.FT.

ELEV. DATUM: NGVD 29

\*\*\*\*\*  
DIRECTIONS "TO REACH"

REGISTERED  
PROFESSIONAL  
LAND SURVEYOR



OREGON  
JULY 8, 1998  
WALTER L. CASWELL  
737

EXPIRES 12/31/97

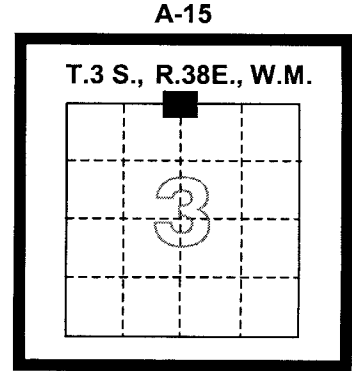
1 meter = 3.280833... U.S. Feet = 39.37 inches exactly  
1 meter = 3.280839895 Intl. Feet or 1 inch = 2.54cm. exactly  
To Calculate Elevation Factor (in the North American Continent)  
Divide 20,906,000 by (20,906,000 + Ellipsoid Elev. in Feet)

JOB 96-007  
SHEET 30 OF 66

**CERTIFIED RECORD OF LAND CORNER MONUMENTATION**

**HISTORY OF ORIGINAL CORNER ESTABLISHMENT:**

This record has been prepared and will be filed to document the establishment of a new monument at the record position of this 1/4 corner subsequent to it's removal by the reconstruction of North McAlister Road. Several existing documents located in the Official Records of the Union County Surveyor provide the basis for the acceptance of the location of this 1/4 corner and a description of the physical monument. Refer to Union County Surveys 041-2002 and 006-2003, and Corner Monumentation Record 049-1996R.



DIAGRAM

**DESCRIPTION OF CORNER EVIDENCE FOUND:**

No evidence was found at this corner location. Prior to the recording of Union County Survey 006-2003, a 2 1/2" brass cap monument existed at the corner location. During the summer of 2003, North McAlister Road was reconstructed and existing corner monument was removed.

**DESCRIPTION OF MONUMENT AND ACCESSORIES I ESTABLISHED TO PERPETUATE THE ORIGINAL LOCATION OF THIS CORNER:**

At the position of this 1/4 corner as shown on Union County Survey 006-2003, I set a 5/8" diameter X 30" long iron rod (concrete reinforcing rod) 4" below the asphalt surface of North McAlister Road and inside a survey monument case and cover, with 2" aluminum cap attached, marked as shown.

**FROM WHICH:**

A found 5/8" iron rod (concrete reinforcing rod) with yellow plastic cap attached and marked "APA", buried 3" in the ground bears N76°38'56"E 30.77 feet. (Monument No. 56-Survey 006-2003)

A found 5/8" iron rod (concrete reinforcing rod), set flush in the ground (plastic cap is missing) bears N79°30'59"W 30.56 feet. (Monument No. 50-Survey 006-2003)

A found 5/8" iron rod (concrete reinforcing rod) set flush in the ground (plastic cap is missing) bears S30°31'01"E 61.91 feet. (Monument No. 801-Survey 006-2003)

Directions and distances for the above Bearing Objects were computed from the coordinate values shown on Survey 006-2003.

A found 5/8" iron rod (concrete reinforcing rod) flush in the ground, with yellow plastic cap attached, marked "BGB SURVEY MARKER" bears N42°21'10"W 233.38 feet. This iron rod was found along the South side of Oregon Hwy. 82, its location was determined in the same manner and at the same time as the other bearing objects described on this monumentation record.

Oregon State Plane Coordinates-North Zone:

619,744.34 North, 8,833,160.38 East

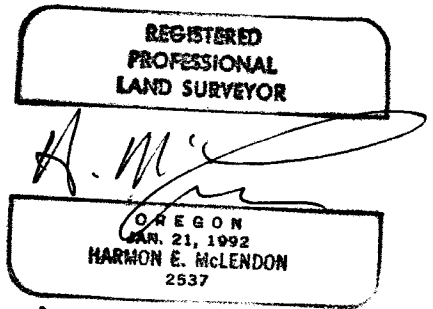
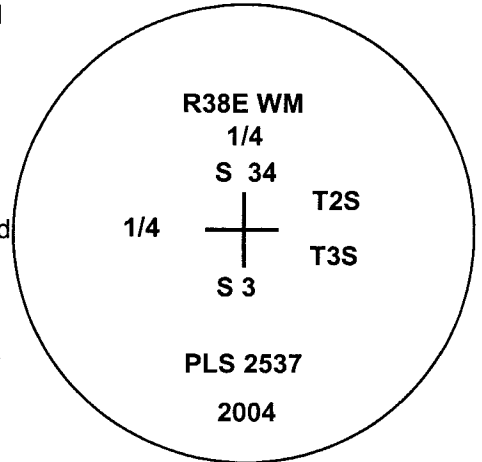
Derived by application of the Scale Factor as shown on Survey 006-2003

These bearing objects were confirmed to be existing by field visitation on February 9, 2004.0

I hereby certify that the above corner position was perpetuated as hereon described in February 9, 2004

Witnesses:

Michael Posada, PLS  
Gary Langlitz



**UNION COUNTY  
SURVEYOR**

---

Date Received 2/24/04

Date Filed 2/25/04

by R. ROBINSON, DEPUTY

File No. 011-2004 R