

CERTIFIED RECORD OF LAND CORNER MONUMENTATION

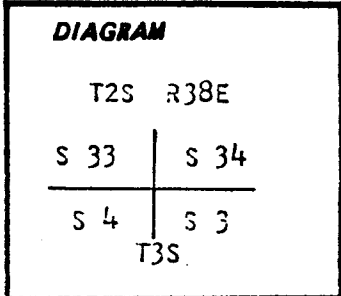
A-13

History of original corner establishment:

Corner originally established by Timothy W. Davenport under GLO contract number 102, dated July 20, 1863. Surveyor General record states:

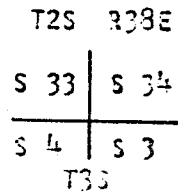
Set post corner to Secs 3, 4, 33 & 34 made mound of earth and drove charred stake as per instructions

Corner reset by C.B. Morgan, Union County Surveyor, date unknown. Mr. Morgan set a brass cylinder on its side in concrete.



Description of corner evidence found:

Found a brass cylinder on its side in concrete marked as shown



Description of monument and accessories established to perpetuate the original location of this corner:

NONE

See survey number 1-84

REGISTERED PROFESSIONAL LAND SURVEYOR

Gregory T. Blackman

OREGON
JULY 13, 1973
GREGORY T. BLACKMAN
991

UNION COUNTY SURVEYOR

Date Received 4-12-84

Date Filed 4-19-84

By G. LANGLITZ DEPUTY

File No. 841-84 R

Office of..... County of.....
State of....., I hereby certify that the within instrument was filed in this office
for record on the..... day of....., 19.....

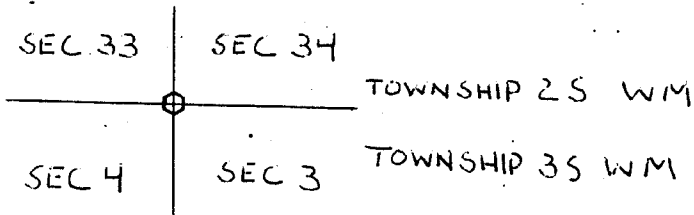
..... by
(COUNTY OFFICIAL) (DEPUTY)

GOVERNMENT CORNER RESTORATION FORM

Township T3S Range R38E Sec. 3 County UNION

State OREGON Date 8-16-85 No. _____

Corner Designation RANGE 38E W/M

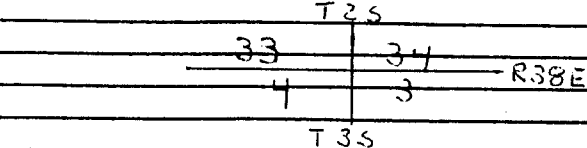


- Condition Report Only
- Not Found
- Renewed
- Unrecorded
- Surveyed In
- Referenced Out

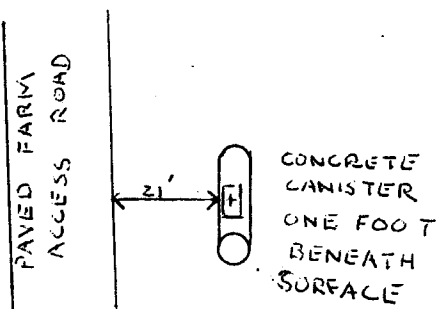
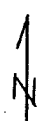
Previous Renewals _____

Monument(s) Found: (Condition and Source)

FOUND: CONCRETE CANISTER ON ITS SIDE WITH BRASS DISC IN TOP MARKED



MONUMENT ONE FOOT BENEATH SURFACE TWENTY-ONE FEET EAST OF PAVED FARM ACCESS ROAD



Accessories Found:

NONE FOUND

UNION COUNTY SURVEYOR

Date Received 10-23-85

Date Filed 10-29-85

By G. LANDELATZ, DEPUTY

File No. 95-85R

RENEWAL

Monument Set (Procedure and Description)

Monument Detail

N/A

N/A

**UNION COUNTY
SURVEYOR**

Date Received _____

Date Filed _____

By _____

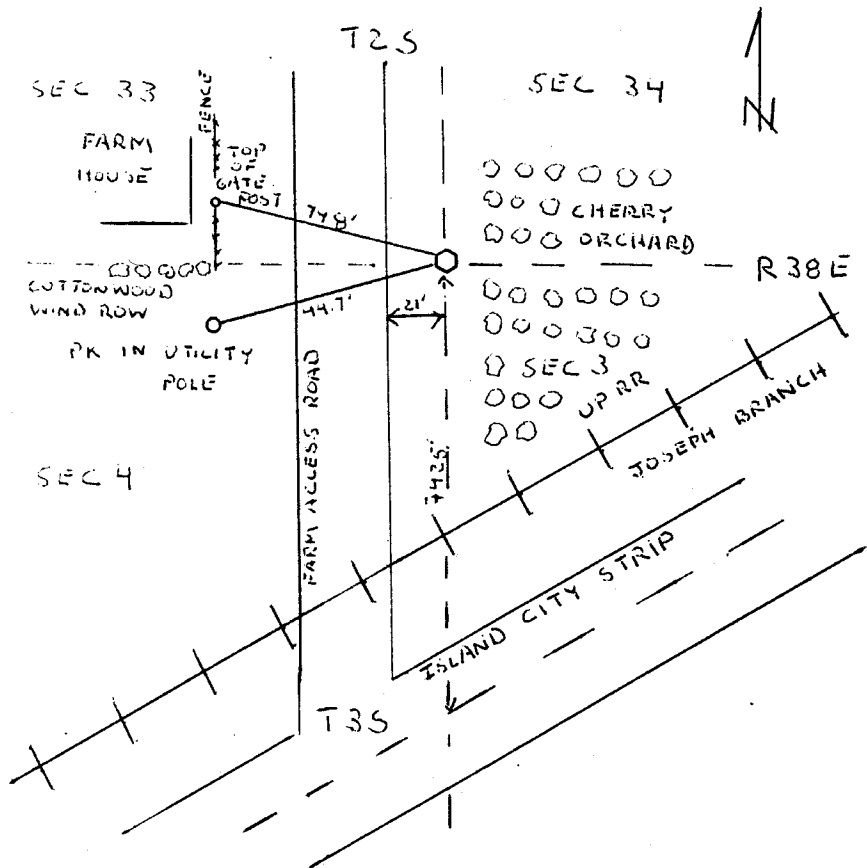
File No. 95-85 R

PAGE 2 OF 2

New Accessories

SET PK NAIL IN UTILITY POLE TO SOUTH WEST OF SECTION CORNER (DISTANCE 44.7') USED TOP OF SOUTH GATE POST AT FARM HOUSE (DISTANCE 74.8')

Sketch of Monument, Accessories, and General Area



Location & Comments

TO LOCATE NW CORNER OF SECTION 3 T35, R38E TRAVEL WESTERLY DIRECTION FROM 4WAY INTERSECTION AT ISLAND CITY FOR .52 MILES TO FARM ACCESS ROAD TO NORTH. HENCE 7425' NORTH ON ROAD TO FARM HOUSE. HENCE 21' EAST AND 1' DEEP TO MONUMENT AT WEST EDGE OF CHERRY ORCHARD

Comp. Declin.

Agency OREGON HIGHWAY DEPARTMENT
Party Chief JOHN OLTMAN
Notekeeper NED WILSON
Witnesses ROB BUTLER
NED WILSON
JOHN OLTMAN

REGISTERED
PROFESSIONAL
LAND SURVEYOR

Duane Berg
OREGON
JULY 15, 1993
DUANE BERG
2043

HORIZONTAL CONTROL DATA

**UNION COUNTY, OREGON
OREGON STATE PLANE, NORTH ZONE (3601)**

STA. NAME: 9222

QUARTER SECTION: SE COR

GEODETIC COOR: NAD 83(91)

SEC. 33 TWP 2 S RGE 38 E

LAT: 45 20'25.08891" N

DATE SURVEYED: MAY, 19, 1992

LONG: 118 03'20.00433" W

SURVEYOR: WALTER L. CASWELL
PLS 737

SP. COOR: NAD 83(91)

FIRM: EAGLE GPS SURVEY CORP
13545 NW SCIENCE PARK DR
PORTLAND, OR. 97229
(503) 643-1073

N: 619669.211 Int.Ft.

E: 8830524.063 Int.Ft.

THETA: 1 44'00.833"

TYPE: GPS

SCALE FACTOR: 0.999899055

ORDER: SECOND CLASS: 1

ELEV: 2743.71 US.Ft.

ELEV. DATUM: NGVD 29

DIRECTIONS "TO REACH"

HORIZONTAL CONTROL DATA

OREGON STATE PLANE, NORTH ZONE (3601)

LAGRANDE & ISLAND CITY, UNION COUNTY OREGON

STA. NAME: 9222

QUARTER SECTION: SE COR

SEC. 33 TWP.2S, RGE.38E, W.M.

DATE FD.: MARCH, 1996

SURVEYOR: WALTER L. CASWELL
PLS 737

FIRM: EAGLE GPS SURVEY CORP
6110 S.W. LOMBARD AVE.
BEAVERTON, OR. 97008
(503) 643-1073

TYPE: GPS

ORDER: SECOND CLASS: 1

GEODETIC COOR: NAD 83(91)

LAT: 45°20'25.08891" N

LONG: 118°03'20.00433" W

SP. COOR: NAD 83(91)

N: 619669.211 INT.FT.

E: 8830524.063 INT.FT.

THETA: 1°44'00.833"

SCALE FACTOR: 0.999899055

ELEV: 2743.764 US.FT.

(2743.71)

ELEV. DATUM: NGVD 29

DIRECTIONS "TO REACH"

**REGISTERED
PROFESSIONAL
LAND SURVEYOR**

Walter L. Caswell

**OREGON
JULY 8, 1996
WALTER L. CASWELL
737**

EXPIRES 12/31/97

1 meter = 3.280833... U.S. Feet = 39.37 inches exactly
1 meter = 3.280839895 Intl. Feet or 1 inch = 2.54cm. exactly
To Calculate Elevation Factor (in the North American Continent)
Divide 20,906,000 by (20,906,000 + Ellipsoid Elev. in Feet)

JOB 96-007
SHEET 8 OF 66