

**CERTIFIED RECORD OF LAND CORNER MONUMENTATION**

**HISTORY OF ORIGINAL CORNER ESTABLISHED:**

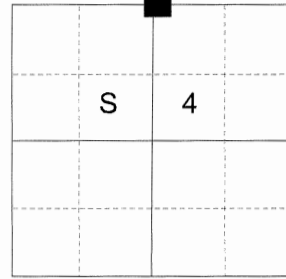
Corner originally established by Timothy W. Davenport under GLO contract number 102, dated Aug. 20, 1863. Surveyor General record states: Set qr. Sec Post from which a willow 4 in dia bears S35°E 44 lks dist, a cherry 4 in dia bears S25°W 55 lks dist

Survey recorded in Old Book of Surveys on Page 364 by Howland stated "N1/4 Cor Sec. 4 Post witnessed by Riddle".

Survey Number 56-73 calls finding a disturbed 2" pipe and set a 5/8" iron pin

Survey Nos. 68-73, 18-77 and 21-77 call finding a monument of record  
Survey Nos. 25-84, 32-84, 41-84, 18-85, 20-89, 22-89 045-2001 and 008-2011 show a position only for this corner

T 3 S R 38 E A-11



**DESCRIPTION OF CORNER EVIDENCE FOUND:**

No evidence of corner found. Found survey monuments from survey numbers 56-73, 22-89 and 045-2001.

See Survey No. 008-2017.

**DESCRIPTION OF MONUMENT AND ACCESSORIES I ESTABLISHED TO PERPETUATE THE ORIGINAL LOCATION OF THIS CORNER:**

At record position of survey number 20-89, established from surrounding found monuments of survey number 56-73, I set a 5/8"x30" iron pin with 2 1/2" brass cap marked as shown below, 28" in the ground 0.3 ft. West of an existing concrete headwall from which:

**NEW BEARING OBJECTS:**

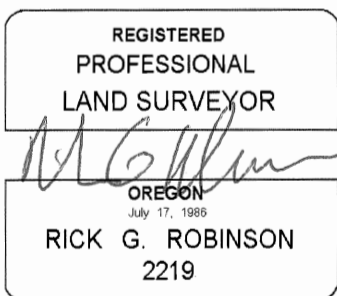
A 5/8" iron pin with plastic cap marked "LS 1952" set by Survey Number 045-2001 bears North 0°00'45" West, a distance of 20.00 feet.

A 5/8"x30" iron pin with 1 1/2" aluminum cap marked "S RP" bears South 0°00'45" East, a distance of 20.00 feet.

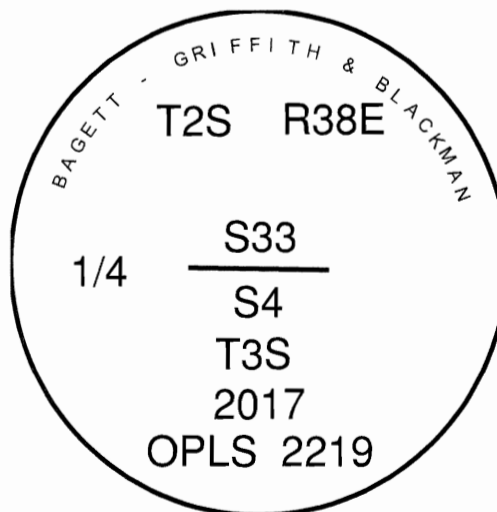
A 5/8"x30" iron pin with 1 1/2" aluminum cap marked "SE RP" bears South 53°01'40" East, a distance of 25.57 feet.

A 5/8"x30" iron pin with 1 1/2" aluminum cap marked "NE RP" bears North 37°14'36" East, a distance of 27.83 feet.

I hereby certify that the corner was monumented on April 19, 2017.



Renewal Date: December 31, 2018



UNION COUNTY SURVEYOR stamp with fields for Date Received (4/20/17), Date Filed (4/20/17), Filed By (signature), and File Number (007-201712).

I used a Leica GS-14 receiver in the establishment of the above described accessories. The basis of bearing is that of survey number 008-2017.

# HORIZONTAL CONTROL DATA

## UNION COUNTY, OREGON

### OREGON STATE PLANE, NORTH ZONE (3601)

STA NAME: 2017009

1/4 SECTION CORNER COMMON TO SECTIONS 4 AND 33

TWP. 2 & 3 S RGE. 38 E.

GEODETIC COORD: NAD 83(91)

DATE TIED: June 1, 2017

LAT: 45 ° 20 ' 25.22319 " N

SURVEYOR: RICK G. ROBINSON  
OPLS 2219

LONG: 118 ° 3 ' 56.98602 " W

FIRM: BAGETT, GRIFFITH, & BLACKMAN  
2006 ADAMS AVENUE  
LAGRANDE, OR 97850  
(541) 963-6092

SP. COOR: NAD 83(91)

N: 619603.066 INT FT.

E: 8827883.522 INT FT.

TYPE: GPS

THETA: 1 ° 43 ' 34.6069799 "

ORDER: SECOND CLASS: 1

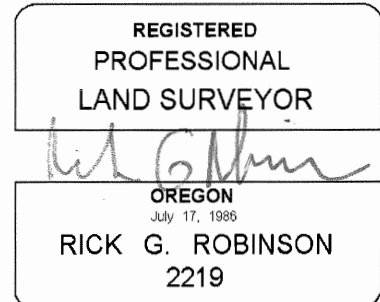
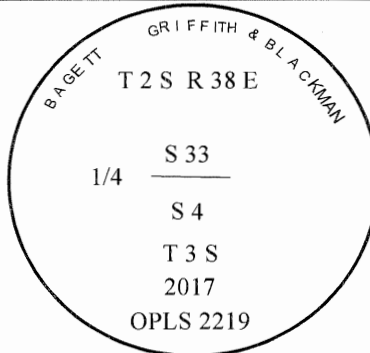
SCALE FACTOR: 0.9998990574

ELEV: 2754.48 US FT.

ELEV: DATUM: NGVD 29

**COMMENTS:**

2 1/2" brass cap monument marked  
as shown, in West face of concrete culvert  
across West Road (May Park)



Renewal Date: December 31, 2018

1 METER = 3.2808333333... US FEET = 39.37 INCHES

1 METER = 3.280839895 INT'L FEET OR 1 INCH = 2.54 CM

TO CALCULATE ELEVATION FACTOR ( IN THE NORTH AMERICAN CONTINENT)

DIVIDE 20,906,000 BY (20,906,000 + ELLIPSOID ELEV. IN FEET)