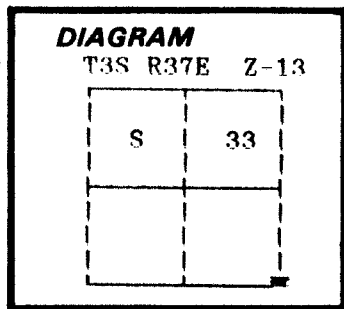


UNION COUNTY
CERTIFIED RECORD OF LAND CORNER MONUMENTATION

History of original corner establishment:

Corner originally established by William H. Odell under GLO contract number 120, dated May 27, 1867. Surveyor General record states:
Set post for section corner from which,
A Pine 18 in. dia. bears N65°E 72 lks
A Pine 24 in. dia. bears S20°W 165 lks
A Pine 24 in. dia. bears S58°E 166 lks



In 1882 the line was retraced by Herman D. Gradon under GLO contract number 452, dated June 16, 1882. Surveyor General record states:
The old sec cor- a post with 3 pine bearing trees. I obliterate the marks on post referring to secs S of the line, and also obliterate the marks on bearing trees S of line.

No record of subsequent monumentation found in Union County survey records.
Description of corner evidence found:

Found a 15 in. dia. Ponderosa Pine stump N65°E, 72 lks, BT blaze evident.
Found a 19 in. dia. Ponderosa Pine stump S49°E, 166 lks, with chopped out BT blaze.
Found a 19 in. dia. Ponderosa Pine stump N23°W, 74.05 ft. with BT blaze, faint scribes visible.

Description of monument and accessories I established to perpetuate the

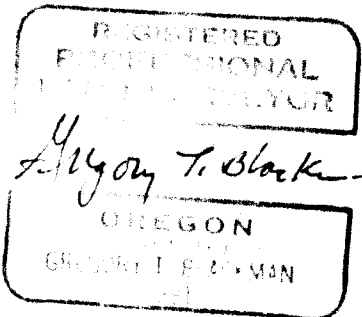
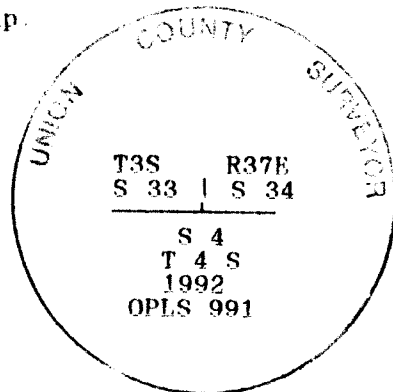
original location of this corner: At record bearing and distance from the found NE and SE bearing trees, I set a 2 1/2" x 30" aluminum pipe with aluminum cap marked as shown, 24 inches in the ground, from which;

New Bearing Trees:
A 23 inch diameter Ponderosa Pine bears N62°E, 151.61 feet marked T3S R37E S34 BT
A 19 inch diameter Ponderosa Pine bears S46°E, 61.00 feet marked X BT
A 19 inch diameter Ponderosa Pine bears S41°W, 103.67 feet marked XX BT
A 15 inch diameter Ponderosa Pine bears N29°W, 89.05 feet marked T3S R37E S33 BT

Raised a mound of stone around monument, 2 ft. base to top of cap.
Set steel fence post 6± feet North with FFS K-tag.

I hereby certify that the above corner point was perpetuated as hereon described on November 6, 1992.

Witness: Jeff Peterson

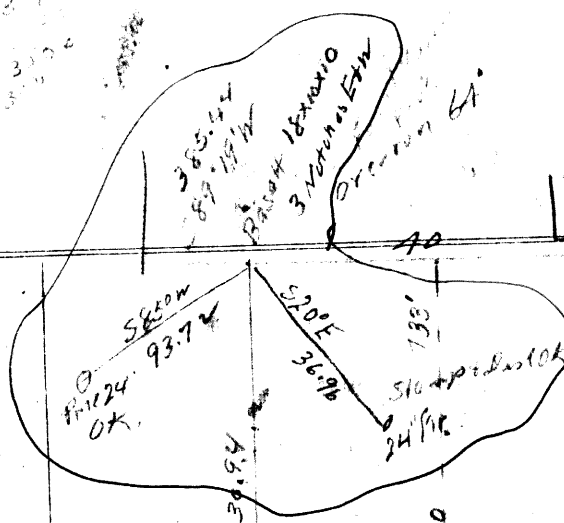


I used a steel tape and magnetic compass in the establishment of new accessories. I used 15° magnetic declination. The distances are to a 50d spike driven in the right side of the root crown. I attached a brass washer marked OPLS 991 to the BT blaze.

**UNION COUNTY
SURVEYOR**

Date Received 11/23/92
Date Filed 11/27/92
By Greg Blackman
File No. 092-1992R

101.66
656
656
72.20



Var 20° E
50.0

1320
5130E
Var 20° E

40 50.9 E

Var 20° E

147.10 W

40.1

Var 20 3/4 E
N 89° 56' W
40.1
18x10x10

Basalt 18x10x10

Var 19 1/4 E

114.10 W

10

Post

11

Var 21 1/2 E