

UNION COUNTY SURVEYOR

Date Received 10-8-87

Date Filed 10-12-87

By G. LANGLITZ, DEPUTY

File No. 145-87R

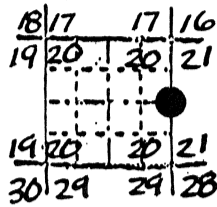
OREGON CORNER RESTORATION FORM

Section 20 Township 3S Range 36E

County Union Date 7-15-87

Corner Designation

Quarter Corner
20 | 21



- Condition Report Only
- Not Found
- Renewed
- Unrecorded
- Surveyed In
- Referenced Out

REFER TO SURVEY 29-87

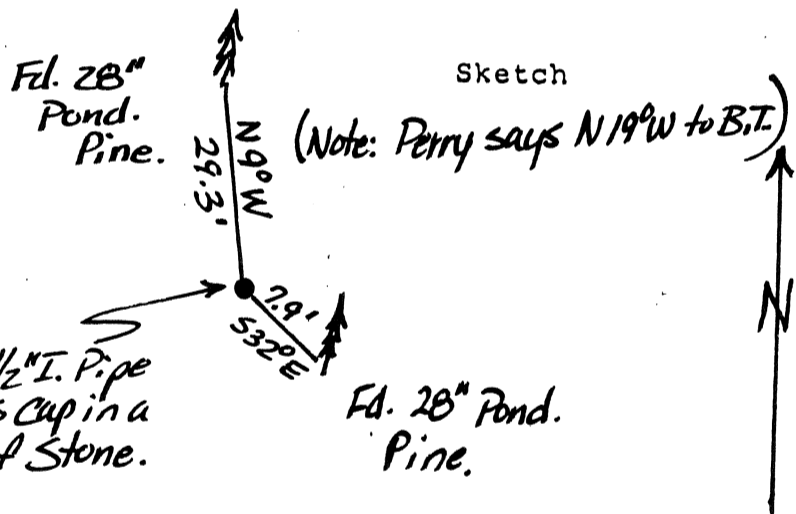
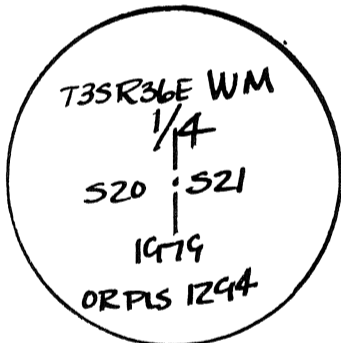
Previous Renewals/Surveys, etc.

1873 Hurlburt - 1979 Howard Perry.

Monument(s) & Accessories Found: (Condition and Source)

Found 2 1/2" Iron Pipe with brass cap firmly set with cap 8" above mound of stone
 Found 28" Ponderosa Pine S32°E- 7.9' with blaze scars no visible scribes
 Found 28" Ponderosa Pine N9°W-29.3' Double blaze with scribes "1/4 S20 BT" visible
 Found Metal fence post with Forest Service Sign 4' north of Corner

Monument Detail



Monument Set (Procedures and Description)

New Accessories

Location & Comments

Red Bridge State Park bearings & Distances by hand compass & Steel tape

Compass Declination

Firm/Agency Oregon State Parks & Recreation Div.

Address 525 Trade Street SE Salem OR 97310

Party Chief R.Hill

Notes R.Hill

Witness H.Hanson

Seal

REGISTERED PROFESSIONAL LAND SURVEYOR

John E. Hollingsworth

OREGON JULY 9, 1985 JOHN E. HOLLINGSWORTH 691

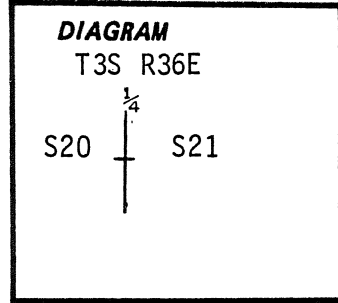
CERTIFIED RECORD OF LAND CORNER MONUMENTATION

207

History of original corner establishment: Corner established in 1873 by J. Hurlburt, under General Land Office Contract No. 201.

Surveyor General's Records state:
Set basalt stone 26x12x5-10 in. in the ground for the 1/4 Sec. Cor.
Pine 20 in. dia. S30⁰E, 12 lks.
Pine 24 in. dia. S15⁰W, 19 lks.

Index File No. P-9



Description of corner evidence found:

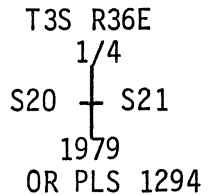
Found stone 26x12x5" lying on ground in mound of stone with 1/4 mark on bottom.

Found live P. Pine 26" in dia. for Southeast BT with visible scribing in upper and lower open blazes.

A burnt stump is in approximate location of Southwest BT. No scribing visible.

Description of monument and accessories established to perpetuate the

original location of this corner: In place of original stone set 2 1/2"x30" galvanized pipe with brass cap stamped:
Set pipe 22" in ground and buried original stone along side.
Built mound of stone to cap.



From which:

Old BT P. Pine 26" in dia. bears S32⁰E, 7.9 ft., with open blazes.
A P. Pine 26" in dia. bears N19⁰W, 29.3 ft., scribed 1/4 S20BT.
Attached 54-3 and 54-4 signs to both BT's. Attached brass washer stamped LS 1294 to foot blaze of new BT's. Painted blazes and 6" band around both BT's orange. Attached 54-4 sign to metal fence post 5' North of corner.

I hereby certify the above corner monument was re-established as herein described on October 11, 1979

WITNESSES: R. Orton
 D. Allen
 L. Huntsman

REGISTERED
PROFESSIONAL
LAND SURVEYOR

OREGON
SEPTEMBER 23, 1977
HOWARD L. PERRY
1 2 9 4

Office of..... County Surveyor..... County of..... Union.....
State of..... Oregon....., I hereby certify that the within instrument was filed in this office
for record on the..... day of....., 19..79
..... by
(COUNTY OFFICIAL) (DEPUTY)

**UNION COUNTY
SURVEYOR**

Date Received _____
Date Filed _____
By _____
File No. 442-84R