

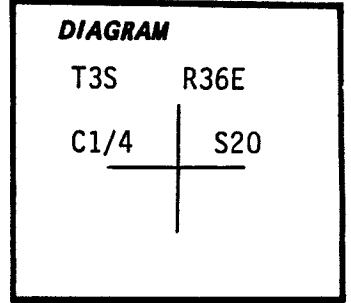
CERTIFIED RECORD OF LAND CORNER MONUMENTATION

-01

History of original corner establishment:

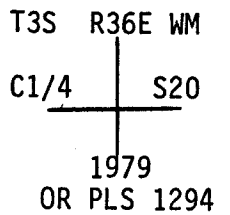
None set.

Index File No. P-7



Description of corner evidence found:

Description of monument and accessories established to perpetuate the original location of this corner: At surveyed point set 2½"x30" galvanized pipe with brass cap stamped:
Set pipe 10" in ground to rock with mound of stone to cap.



From which:

A P. Pine 9" in dia. bears N32°E, 99.5 ft., scribed C1/4 S20 BT.
A P. Pine 12" in dia. bears N63°W, 96.2 ft., scribed C1/4 S20 BT.
Attached 54-3 signs to both BTs. Attached brass washer stamped LS 1294 to foot blaze of both BTs. Painted blazes and 6" band around both BTs. red. Attached 54-2 and 54-4 signs to metal fence post 6' West of corner. Attached 54-2 and 54-9 signs to metal fence post 6' North of corner.

I hereby certify the above corner monument was established as herein described on November 28, 1979.

Witnesses: G. Wagoner
D. Allen

**REGISTERED
PROFESSIONAL
LAND SURVEYOR**

OREGON
SEPTEMBER 23, 1977
HOWARD L. PERRY
1294

Office of..... County Surveyor..... County of..... Union.....
State of..... Oregon....., I hereby certify that the within instrument was filed in this office
for record on the..... day of....., 19..79
..... by

(COUNTY OFFICIAL) (DEPUTY)

Form R6-7100-57 (9/71)

UNION COUNTY SURVEYOR	
Date Received _____	☆ GPO—798-276
Date Filed _____	
By _____	
File No. <u>441-84 R</u>	

UNION COUNTY SURVEYOR

Date Received 10-8-87

Date Filed 10-12-87

By G. LANGLITZ, DEPUTY

File No. 143-87R

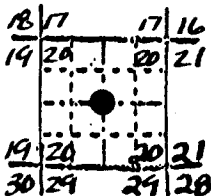
OREGON CORNER RESTORATION FORM

Section 20 Township 3S Range 36E

County Union Date 7-14-87

Corner Designation

*Center Quarter
Corner
Sec. 20*



REFER TO SURVEY 29-87

- Condition Report Only
- Not Found
- Renewed
- Unrecorded
- Surveyed In
- Referenced Out

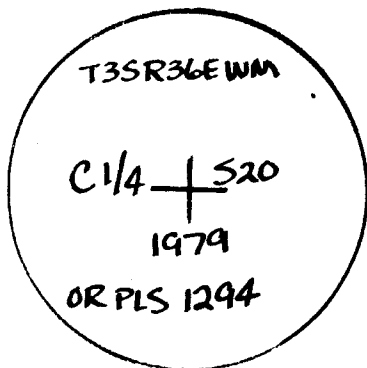
Previous Renewals/Surveys, etc.

1979 Howard Perry

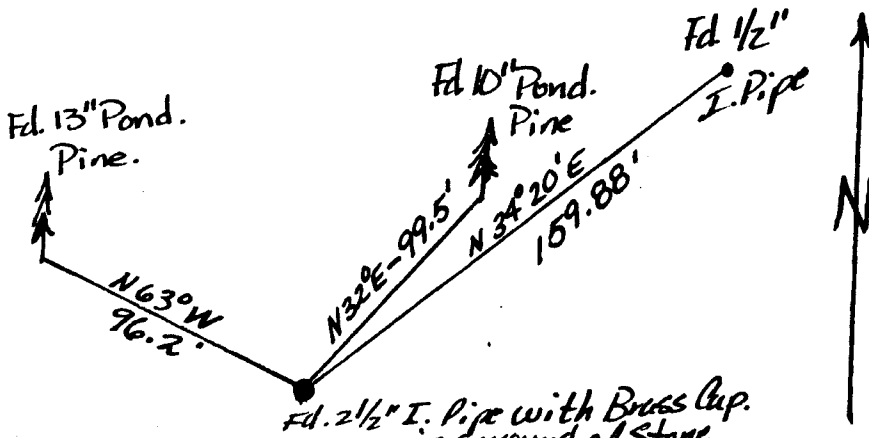
Monument(s) & Accessories Found: (Condition and Source)

- Found 2½" Iron pipe with brass cap in mound of stone
- Found 10" Ponderosa Pine N32°E-99.5' scribes visible "C¼S20BT"
- Found 13" Ponderosa Pine N63°W-96.2' scribes visible "C¼S20BT"
- Found Cortags on both BTs. Found Metal fence posts with Forest Service signs 6' West & 6' North of Corner.
- Found ½" IP N34°20'E-159.88' From corner
- Found this Monument to be 0.51' north and 2.11 East of True Position.

Monument Detail



Sketch



Monument Set (Procedures and Description)

New Accessories

Location & Comments
SW Corner of Red Bridge State Park Bearings & Distances by hand compass & Steel tape.

Compass Declination
Firm/Agency Oregon State Parks & Recreation Div.
Address 525 Trade Street SE Salem OR 97310

Party Chief R.Hill
Notes R.Hill
Witness H.Hanson

Seal

REGISTERED PROFESSIONAL LAND SURVEYOR

John E. Hollingsworth

OREGON
JULY 9, 1988
JOHN E. HOLLINGSWORTH
691