

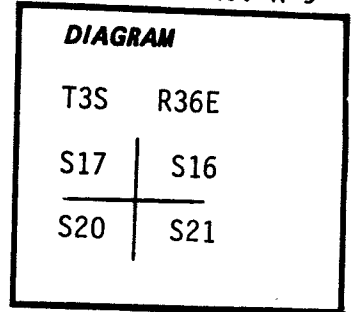
CERTIFIED RECORD OF LAND CORNER MONUMENTATION

Index File No. N-9

History of original corner establishment:

Corner established in 1873 by J. Hurlburt, under General Land Office Contract No. 201. Surveyor General's records state:

Set basalt stone 18 x 20 x 8 - 8 in. in ground and made mound of stone 2 ft. high for cor to secs. 16-17-20-21.
 Pine 18 in. dia. S79°E 192 lks.
 Pine 24 in. dia. N24°W 68 lks.
 No others near.



Description of corner evidence found:

Found 18"x10"x8" stone lying flat on the ground 8" above ground in large mound of stone.

Found 24" down and decaying P. Pine with visible scribing in lower blaze bearing N24°W, 68 lks.
 Found 18" P. Pine stump with no visible scribing bearing S79°E, 192 lks.

Description of monument and accessories I established to perpetuate the original location of this corner: At original stone position set 2½"x30" galvanized pipe with brass cap stamped:

Set pipe 21" in ground with mound of stone to cap. Buried original stone beside pipe.

From which:

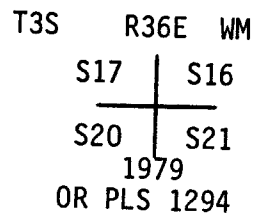
A P. Pine 30" in dia. bears S24°E, 128.8 ft., scribed T3S R36E S21 BT.

A P. Pine 20" in dia. bears S34°W, 83.5 ft., scribed T3S R36E S20 BT.

A P. Pine 22" in dia. bears N16°W, 154.0 ft., scribed T3S R36E S17 BT.

An 18"x12"x6" stone with a "+" in a mound of stones bears N62°E, 10.6 ft., for bearing object in S16. Attached 54-3 sign to metal fence post next to mound.

Attached 54-3 and 54-4 signs to all BTs. Painted blazes and 6" band around all BTs orange. Attached 54-2 and 54-4 signs to metal fence post 5' west of corner.



I hereby certify the above corner monument was reestablished as herein described on October 11, 1979.

Witnesses: R. Orton
 D. Allen
 L. Huntsman

REGISTERED PROFESSIONAL LAND SURVEYOR

 OREGON
 SEPTEMBER 23, 1977
 HOWARD L. PERRY
 1 2 9 4

Office of..... County Surveyor County of..... Union
 State of..... Oregon....., I hereby certify that the within instrument was filed in this office for record on the..... day of....., 19.....79
 by
 (COUNTY OFFICIAL) (DEPUTY)

UNION COUNTY SURVEYOR

Date Received _____
 Date Filed _____
 By _____
 File No. 437-84 R

OREGON CORNER RESTORATION FORM

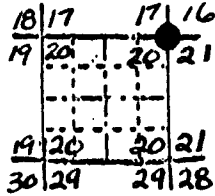
Section 20 Township 3S Range 36E

County Union Date 7-14-87

Corner Designation

Section Corner

16, 17, 20, and 21



- X Condition Report Only
- Not Found
- Renewed
- Unrecorded
- Surveyed In
- Referenced Out

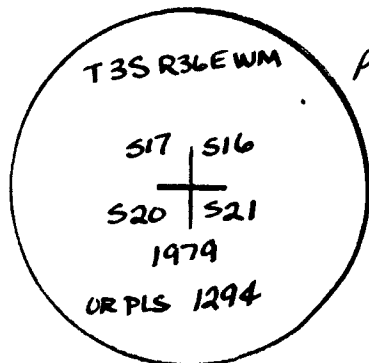
Previous Renewals/Surveys, etc.

1873-Hurlburt 1968-State Parks 1979-Howard Perry

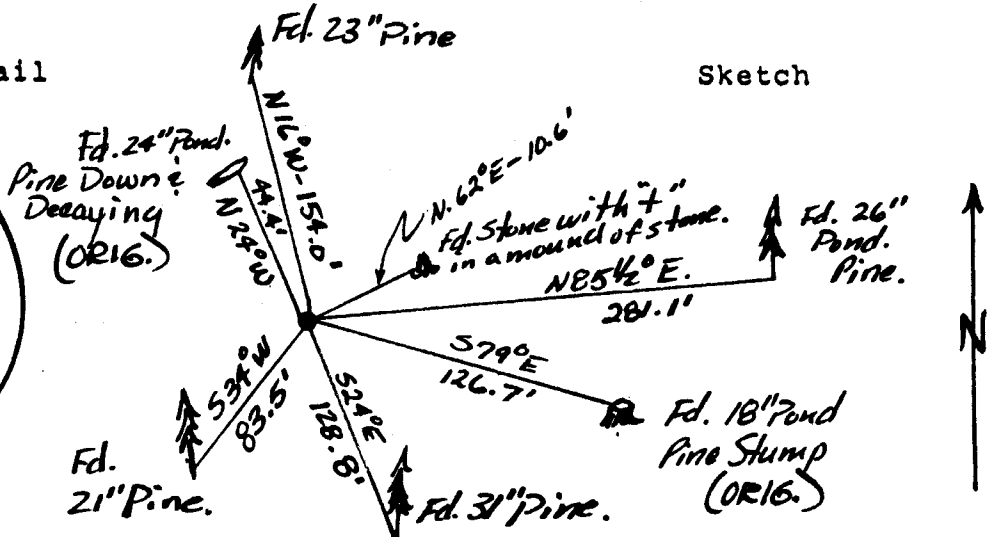
Monument(s) & Accessories Found: (Condition and Source)

- Found 2½" Iron Pipe with brass cap firmly set in a mound of stones (Perry)
- Found 24" down & decaying pond. Pine N24°W-449' no scribes visible & burntout blaze (orig.)
- Found 18" Ponderosa pine stump S79°E-126.7' No marks visible (orig.)
- Found 26" Ponderosa Pine N85½°E-281.1' with partially healed blaze could not make out scribes (parks)
- Found 31" Pine S24°E-128.8' scribes "T3SR36ES21BT" visible. (parks)
- Found 21" Pine S34°W-83.5' with partially healed blaze could not make out scribes (parks)
- Found 23" Pine N16°W-154.0' Scribes "T3SR36ES17BT" visible (parks)

Monument Detail



Sketch



Monument Set (Procedures and Description)

Monument (s) & Accessories Found: (condition & source) (cont'd)
 Found 18"x12"x6" Stone with a "+" in a mound of stone N62°E-10.6' with a metal post alongside mound. Found metal fence post with Forest Service sign 5' west of corner & a white 4"x4" post alongside laying down.

New Accessories

UNION COUNTY SURVEYOR

Date Received 10-8-87

Date Filed 10-12-87

By G. LANGLITZ DEPUTY

File No. 139-87 R

REFER TO SURVEY 29-87
Seal

Location & Comments

Red Bridge State Park
 Bearings & distances
 by hand compass &
 steel tape.

Compass Declination

Firm/Agency Oregon State
 Parks & Recreation Div.

Address 525 Trade Street SE
 Salem OR 97310

Party Chief R.Hill

Notes R.Hill

Witness H.Hanson

REGISTERED
PROFESSIONAL
LAND SURVEYOR

John E. Hollingsworth
 OREGON
 JULY 9, 1968
 JOHN E. HOLLINGSWORTH
 691