

**UNION COUNTY SURVEYOR  
CERTIFIED RECORD OF LAND CORNER MONUMENTATION**

**HISTORY OF ORIGINAL CORNER ESTABLISHED:**

Corner originally established by U.S. Deputy Surveyor J. Cooper under contract No. 397 dated July 1, 1881.

Surveyor General notes state:

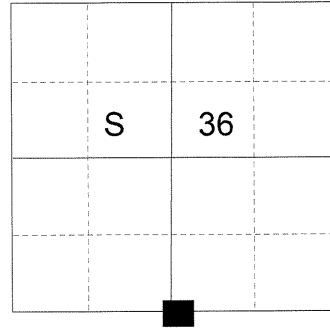
Set post 3 ½ feet long, 3 ins. square 18 ins. in the ground, in open pine timber, for 1/4 Sec. Cor. marked 1/4 S on the N. & S. faces.

A pine 12 ins. diam bears N 39° W, 51 lks. dist., marked 1/4 S BT.

A pine 12 ins. diam bears S 75° W, 54 lks. dist., marked 1/4 S BT.

Corner monumented with a 2 ½" x 30" aluminum monument by Greg Blackman in Survey No. 015-1990.

T 3 S R 35 E Z-23



**DESCRIPTION OF CORNER EVIDENCE FOUND:**

Found a 2 ½" aluminum pipe with a 2 ½" aluminum cap marked as shown below 3" above ground.

Found a 16" Ponderosa Pine bears N 18° W, a distance of 42.55 feet, alive and vigorous with a healed blaze.

**DESCRIPTION OF MONUMENT AND ACCESSORIES I ESTABLISHED TO PERPETUATE THE ORIGINAL LOCATION OF THIS CORNER:**

From the aluminum pipe monument.

**NEW BEARING OBJECTS:**

A 8' Ponderosa Pine bears N 70° E, a distance of 24.40 feet, marked X BT.

A 7" Ponderosa Pine bears N 53° W, a distance of 45.95 feet, marked 1/4 S36 BT.

A 7" Ponderosa Pine bears NORTH, a distance of 65.20 feet, marked 1/4 S36 BT.

I hereby certify that this corner was perpetuated on January 28, 2015.

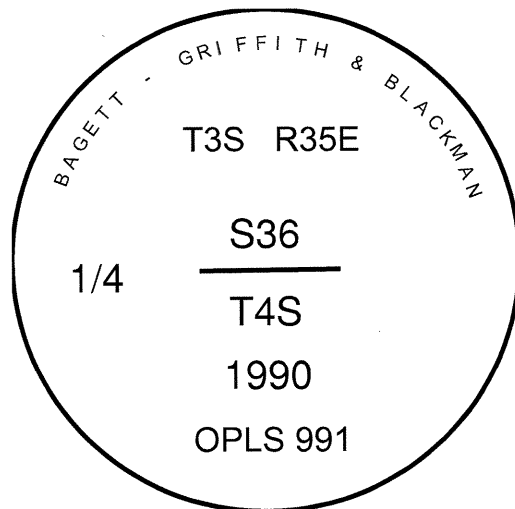
Witness: Thomas J. Kopp

REGISTERED  
PROFESSIONAL  
LAND SURVEYOR

*Rick G. Robinson*

OREGON  
July 17, 1986  
RICK G. ROBINSON  
2219

Renewal Date: December 31, 2016



**UNION COUNTY SURVEYOR**

Date Received 2/4/15

Date Filed 2/4/15

Filed By [Signature]

File Number 011-2015R

I used a steel tape and magnetic compass in the establishment of the new accessories. I used 16° East declination, the distances are to a 60d spike driven into the right side of the root crown of the new bearing trees. A brass washer marked OPLS 83571 is attached to the BT blaze of the new bearing trees.

# HORIZONTAL CONTROL DATA

## UNION COUNTY, OREGON

### OREGON STATE PLANE, NORTH ZONE (3601)

STA NAME: 201503

1/4 SECTION CORNER COMMON TO SECTION 36 ONLY

TWP. 3 S. RGE. 35 E.

GEODETIC COORD: NAD 83(91)

DATE TIED: January 28, 2015

LAT: 45 ° 15 ' 8.10418 " N

SURVEYOR: RICK G. ROBINSON  
OPLS 2219

LONG: 118 ° 22 ' 36.82178 " W

FIRM: BAGETT, GRIFFITH, & BLACKMAN  
2006 ADAMS AVENUE  
LAGRANDE, OR 97850  
(541) 963-6092

SP. COOR: NAD 83(91)

N: 585242.671 INT FT.

E: 8748777.521 INT FT.

TYPE: GPS

THETA: 1 ° 30 ' 20.43512 "

ORDER: SECOND CLASS: 1

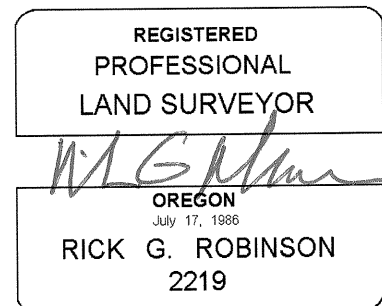
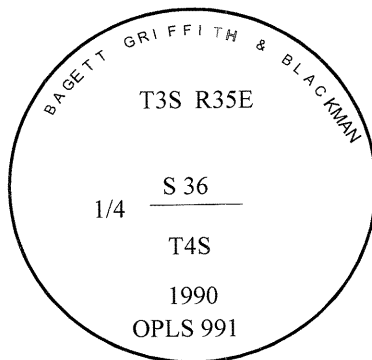
SCALE FACTOR: 0.999895642

ELEV: 3463.21 US FT.

ELEV: DATUM: NGVD 29

**COMMENTS:**

2 1/2" aluminum monument marked as shown  
3" above ground



Renewal Date: December 31, 2016

1 METER = 3.2808333333... US FEET = 39.37 INCHES

1 METER = 3.280839895 INT'L FEET OR 1 INCH = 2.54 CM

TO CALCULATE ELEVATION FACTOR ( IN THE NORTH AMERICAN CONTINENT)

DIVIDE 20,906,000 BY (20,906,000 + ELLIPSOID ELEV. IN FEET)