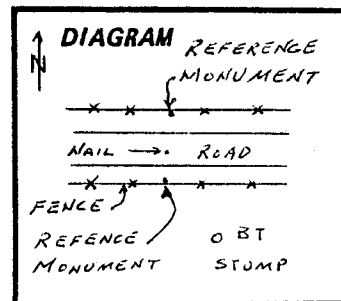


CERTIFIED RECORD OF LAND CORNER MONUMENTATION

History of original corner establishment:

Original corner was established in 1881 by Jacob Cooper.
Set a post 3 1/2 ft long 3 in. square 18 in. in the ground, for the 1/4 sec. cor. marked 1/4 on the N. and S. faces. Raised a mound of stone 3 ft at base 18 in. high.
A pine 14" diam bears S 40° E 335 lks dist marked 1/4 S BT.

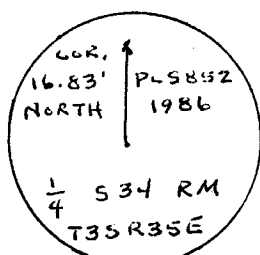
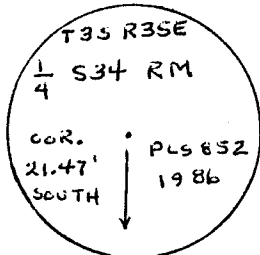


Description of corner evidence found:

A 42" tall, 12" diameter rotted Ponderosa Pine stump with visible 1/4 S BT scribe. S 40° E, 221.1'.

Description of monument and accessories established to perpetuate the original location of this corner:

I drove a 6" nail in the road at the corner point.
Set a 2" x 30" galvanized iron pipe with 2 1/2" brass cap on each side of the road. Each pipe is set 27" into the ground with a collar of stone. A fence post with a USFS ' Land Survey Monument ' is set 5 feet east of each monument. The caps are marked:



I hereby certify the above corner point was perpetuated as hereon described on September 10, 1986.

SEE SURVEY
35-86

UNION COUNTY SURVEYOR
Date Received 10-2-86
Date Filed 10-13-86
By G. LANGLITZ, DEPUTY
File No. 179-86 R

REGISTERED PROFESSIONAL LAND SURVEYOR

David L. Haddock

OREGON
JULY 12, 1969
DAVID L. HADDOCK
852

Office of...County...Surveyor..... County of...Union.....
State of...Oregon....., I hereby certify that the within instrument was filed in this office
for record on the..... day of....., 19.....
..... by
(COUNTY OFFICIAL) (DEPUTY)

CERTIFIED RECORD OF LAND CORNER MONUMENTATION

HISTORY OF ORIGINAL CORNER ESTABLISHED:

Corner was established by Jacob Cooper under GLO contract number 397 dated July 1, 1882. Surveyor General field notes state:

Set post 3 1/2' long, 3" square, 18" in ground for 1/4 sec. cor. marked 1/4 sec. on the N. and S. faces from which:

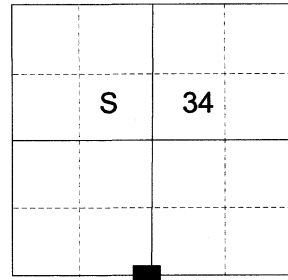
A Pine 14 in. diam. bears S40°E 335 lks. dist. marked 1/4 S BT

No other trees in limits, erected mound of stone alongside

In 1986 David Haddock found the bearing tree stump with "1/4 S BT" scribe visible. Union County Monumentation record 179-86R states: I drove a 6" nail in the road at the corner point. Set 2"x30" galvanized iron pipes with 2 1/2" brass caps on each side of the road. Each pipe is set in ground 27" with a collar of stone.

A fence post is set 5 feet east of each monument.

T 3 S R 35 E Z15



DESCRIPTION OF CORNER EVIDENCE FOUND:

Found 2- 2 1/2" iron pipes with 2 1/2" brass caps marked as shown below, both 3" above ground and in a collar of stone, from which:

Baseline road falls between the reference monuments. Did not find a nail in the middle of Baseline Rd.

DESCRIPTION OF MONUMENT AND ACCESSORIES I ESTABLISHED TO PERPETUATE THE ORIGINAL LOCATION OF THIS CORNER:

From the North iron pipe reference monument:

NEW BEARING OBJECTS:

A 20" Ponderosa Pine bears North 26° East, a dist. of 59.45 ft., marked 1/4 S34 BT

A 13" Ponderosa Pine bears North 70° West, a dist. of 35.25 ft., marked 1/4 S34 BT

An East/West fence line bears approx. 2 ft. North with monumentation sign on post approx. 3 ft. Northwesterly of monument.

From the South iron pipe reference monument:

NEW BEARING OBJECTS:

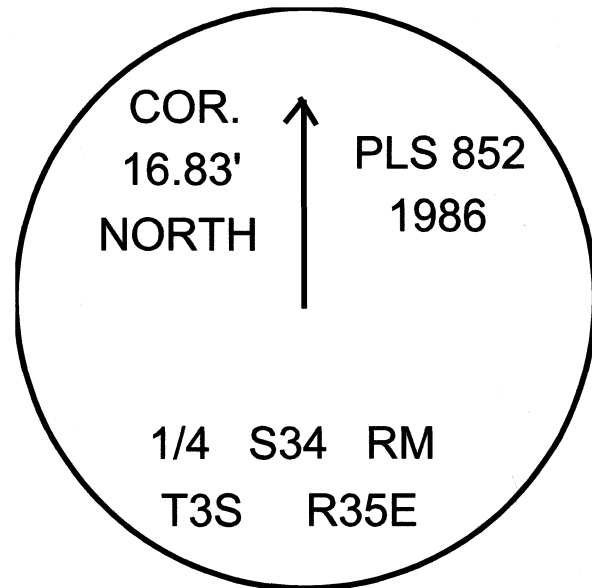
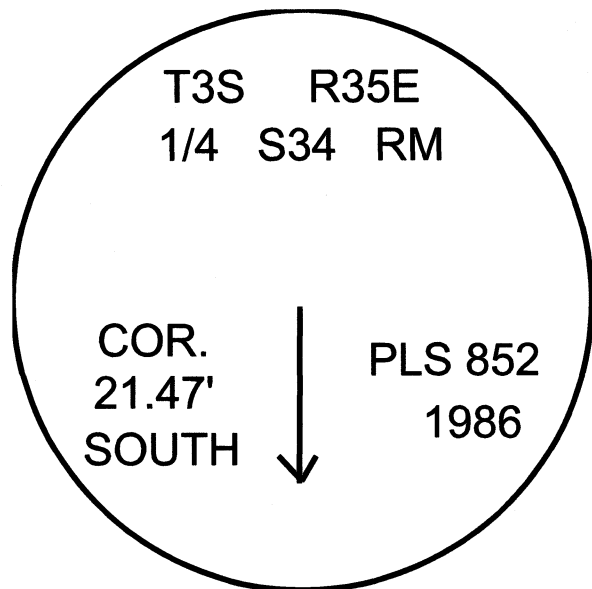
A Power Pole #050035292 bears North 67° East, a dist. of 6.90 ft.

A 3' "T" post bears East, a dist. of 5.30 ft., with monumentation sign attached

An East/West fence line bears approx. 1.50 ft. South

I hereby certify that the corner was perpetuated on December 1, 2020.

Witness: Kyle A. Tucker



UNION COUNTY SURVEYOR

Date Received 12/09/2020

Date Filed 12/09/2020

Filed By [Signature]

File Number 092-2020R

Renewal Date: June 30, 2021

I used a steel tape and magnetic compass in the establishment of the new accessories. I used 14° East declination, the distances are to a 60d spike driven into the right side of the root crown of the bearing trees. A brass washer marked OPLS 83571 is attached to the BT blaze of the new bearing trees. Distance and bearing of the power pole is to the center as it stands.

HORIZONTAL CONTROL DATA
UNION COUNTY, OREGON
OREGON STATE PLANE, NORTH ZONE (3601)

STA NAME: 2020040

1/4 SECTION CORNER COMMON TO SECTION 34 ONLY (SOUTH REFERENCE MONUMENT)

TWP. 3 S RGE. 35 E.

GEODETIC COORD: NAD 83(91)

DATE TIED: DECEMBER 1, 2020

LAT: 45 ° 15 ' 8.40007 " N

SURVEYOR: RICK G ROBINSON
OPLS 2219

LONG: 118 ° 25 ' 5.62315 " W

FIRM: BAGETT, GRIFFITH, & BLACKMAN
2006 ADAMS AVENUE
LAGRANDE, OR 97850
(541) 963-6092

SP. COOR: NAD 83(91)

N: 584995.660 INT FT.

E: 8738136.120 INT FT.

TYPE: GPS

THETA: 1 ° 28 ' 34.9072688 "

ORDER: SECOND CLASS: 1

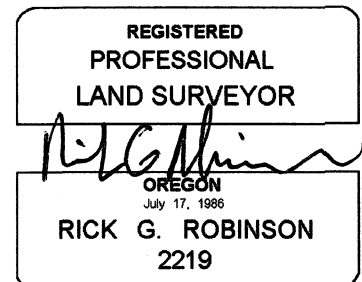
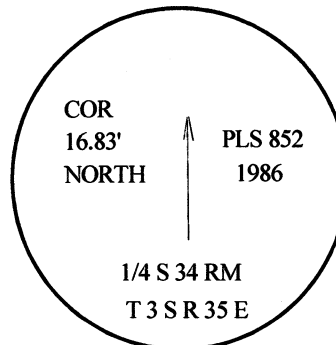
SCALE FACTOR: 0.9998956441

ELEV: 3489.72 US FT.

ELEV: DATUM: NGVD 29

COMMENTS:

2" iron pipe with 2 1/2" brass cap marked as shown, set in mound of stone



Renewal Date: December 31, 2020

1 METER = 3.2808333333... US FEET = 39.37 INCHES

1 METER = 3.280839895 INT'L FEET OR 1 INCH = 2.54 CM

TO CALCULATE ELEVATION FACTOR (IN THE NORTH AMERICAN CONTINENT)

DIVIDE 20,906,000 BY (20,906,000 + ELLIPSOID ELEV. IN FEET)

HORIZONTAL CONTROL DATA

UNION COUNTY, OREGON

OREGON STATE PLANE, NORTH ZONE (3601)

STA NAME: 2020041

1/4 SECTION CORNER COMMON TO SECTION 34 ONLY (NORTH REFERENCE MONUMENT)

TWP. 3 S RGE. 35 E.

GEODETIC COORD: NAD 83(91)

DATE TIED: DECEMBER 1, 2020

LAT: 45 ° 15 ' 8.77817 " N

SURVEYOR: RICK G ROBINSON
OPLS 2219

LONG: 118 ° 25 ' 5.62292 " W

FIRM: BAGETT, GRIFFITH, & BLACKMAN
2006 ADAMS AVENUE
LAGRANDE, OR 97850
(541) 963-6092

SP. COOR: NAD 83(91)

N: 585033.939 INT FT.

E: 8738135.150 INT FT.

TYPE: GPS

THETA: 1 ° 28 ' 34.907428 "

ORDER: SECOND CLASS: 1

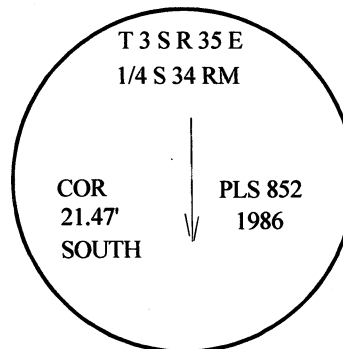
SCALE FACTOR: 0.9998956468

ELEV: 3489.24 US FT.

ELEV: DATUM: NGVD 29

COMMENTS:

2" iron pipe with 2 1/2" brass cap marked as shown, set in mound of stone



REGISTERED
PROFESSIONAL
LAND SURVEYOR

Rick G. Robinson
OREGON
July 17, 1986
RICK G. ROBINSON
2219

Renewal Date: December 31, 2020

1 METER = 3.2808333333... US FEET = 39.37 INCHES

1 METER = 3.280839895 INT'L FEET OR 1 INCH = 2.54 CM

TO CALCULATE ELEVATION FACTOR (IN THE NORTH AMERICAN CONTINENT)

DIVIDE 20,906,000 BY (20,906,000 + ELLIPSOID ELEV. IN FEET)