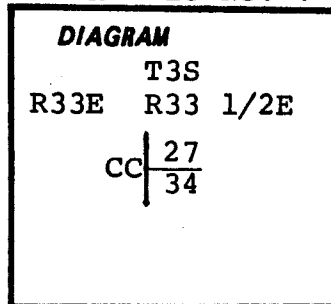


CERTIFIED RECORD OF LAND CORNER MONUMENTATION

Index File No. V-13

History of original corner establishment:

In 1882, under Contract No. 451, Rufus S. Moore set a post, from which a 26" Tamarack bears N62°E, 62 lks. and a 34" Tamarack bears S45°E, 8 lks.



Description of corner evidence found:

No corner monument found.

Bearing trees found:

- A 19.5" W. Larch, blaze healed, bears N62°E, 17.2 Ft, original BT.
- A 22" W. Larch bears S45°E, 8 lks from original corner, scribing visible "T3S R33 1/2E S34".

Appears the discrepancy from the original record on the northeast BT is that the distance was transposed from 26 lks. to 62 lks.

Description of monument and accessories | established to perpetuate the original location of this corner:

Set 2 1/2"x30" aluminum capped aluminum pipe rising 4" next to the root of a tree. Cap stamped:

T3S
S36 S27 S34 CC
R33 1/2E
RLS 1848
1984

New BT's:

- A 12.5" W. Larch bears S11 1/2°E, 64.5 ft., scribed T3S R33 1/2E S34 CC BT.
- Northeast found BT re-blazed and scribed T3S R33 1/2E S27 CC BT, bears N11°E, 9.9 ft. from the new closing corner.

Painted blazes and attached signs as per Standard Specifications for Cadastral Surveys, USFS Region 6, March 1982. Set metal fence post 4 ft. north of corner.

Compass Declination: 191/2°E

Witness: D. Scott

From the intersection of 2115-135 & 2115-136, go northwesterly 1/4 mi. Corner is West 300 ft.

I hereby certify the above described corner monument and/or accessories was established as described on May 30, 1984.

REGISTERED PROFESSIONAL LAND SURVEYOR
<i>B. A. Sutton</i>
OREGON JULY 13, 1979 B. A. SUTTON 1848

Office of..... County of.....

State of..... I hereby certify that the within instrument was filed in this office

for record on the..... day of....., 19.....

..... by

(COUNTY OFFICIAL)

(DEPUTY)

UNION COUNTY SURVEYOR
Date Received <u>7-2-84</u>
★ GPO-798-276
Date Filed <u>7-3-84</u>
By <u>G. LANGLITZ, DEPUTY</u>
File No. <u>897-84 R</u>