

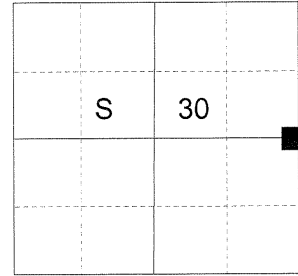
CERTIFIED RECORD OF LAND CORNER MONUMENTATION

**HISTORY OF ORIGINAL CORNER ESTABLISHED:**

Corner originally established by Herman D. Gradon under GLO contract 517, dated September 30, 1884. Surveyor General field notes state:

Set a basalt stone 12x10x9 ins. 8 ins. in the ground for 1/4 sec. cor. marked 1/4 on W face, from which:  
A pine 3 ins. in diam bears N65°W, 86 lks. dist. marked 1/4 S BT.  
A pine 14 ins. in diam bears S40°E, 99 lks. dist. marked 1/4 S BT.

T 3 N R 40 E T-05



**DESCRIPTION OF CORNER EVIDENCE FOUND:**

Found an unrecorded 2" iron pipe with brass washer marked as shown below, protruding 3 inches above ground, from which:

A 23" Ponderosa Pine bears North 65° West, a distance of 56.8 feet, with a previously opened blaze with scribe marks 'BT' visible.

SEE SURVEY NUMBER 028-2016

**DESCRIPTION OF MONUMENT AND ACCESSORIES I ESTABLISHED**

**TO PERPETUATE THE ORIGINAL LOCATION OF THIS CORNER:**

From the iron pipe position, I take new bearing trees:

**NEW BEARING OBJECTS:**

An 8" Douglas Fir bears South 2° East, a distance of 50.50 feet, marked 1/4 S29 BT.  
An 11" Douglas Fir bears South 35° West, a distance of 91.6 feet, marked 1/4 S30 BT.  
A 14" Douglas Fir bears North 18° West, a distance of 35.55 feet, marked 1/4 S30 BT.  
No suitable trees in NE quadrant.

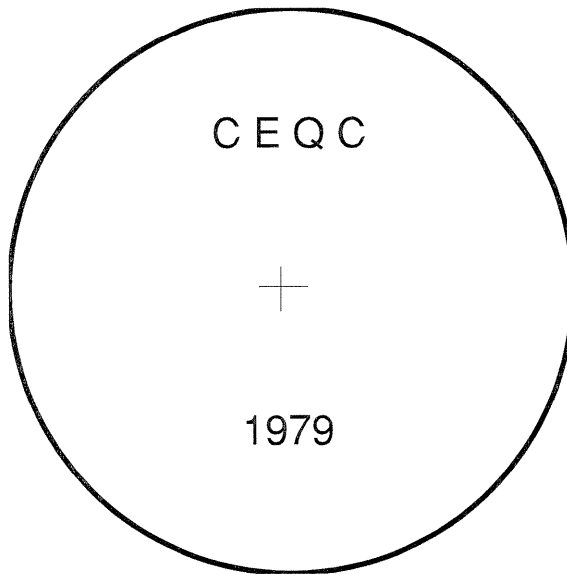
Drove a steel fencepost approx 0.5 feet South of monument.

I hereby certify that this monument was perpetuated August 24, 2016.

REGISTERED PROFESSIONAL LAND SURVEYOR  
*[Signature]*  
OREGON June 2, 2010  
JEFFREY S. HSU  
83571

Renewal Date: June 30, 2017

UNION COUNTY SURVEYOR  
Date Received 8/31/16  
Date Filed 8/31/16  
Filed By [Signature]  
File Number 037-2016R



I use a steel tape and magnetic compass in the establishment of the bearing trees. Magnetic declination used was 15° East. Distances to the new trees are to a spike in the root crown of the trees. Bearings are to a brass washer in the lower blaze marked OPLS 83571.