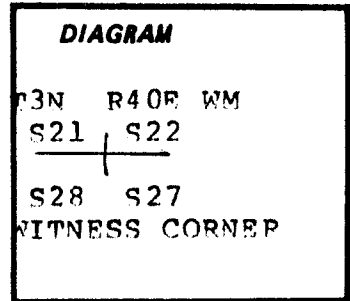


**CERTIFIED RECORD OF LAND CORNER MONUMENTATION**

INDEX: R-13

History of original corner establishment:



A. Corner established by US Deputy Surveyor Herman D. Gradon under his contract number 517 dated Sept. 30, 1884. Surveyor General's Record states: Var. 20° 79.00 Grande Ronde River, runs NW. As true cor. point will come in river, I set at this place a basalt stone, 10x8x8 ins., 7 ins. in the ground, for witness cor. to secs. 21,22,27 and 28, marked WC, with 2 notches on S. and 3 notches on E. edge; from which

- A fir, 10 ins. diam., bears N.80E., 8 lks. dist., marked WC T3N R40E S22 BT
- A fir, 8 ins. diam., bears S.50E., 21 lks. dist., marked WC T3N R40E S27 BT
- A fir, 5 ins. diam., bears S.30W., 7 lks. dist., marked WC T3N R40E S28 BT
- A fir, 10 ins. diam., bears N.60W., 12 lks. dist., marked WC T3N R40E S21 BT

Description of corner evidence found:

B. MONUMENT FOUND:

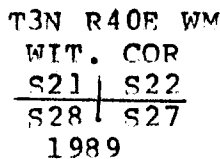
none; steep face above south edge Grande Ronde River on north edge of Boise Cascade logging road.

ACCESSORIES FOUND:

found dead and decaying remains of the fir bearing tree for section 27 at the base of the rock rubble slope north edge road and south edge of river. The bearing tree has visible blaze and scribe marks of "N R 40 E S 27 BT" but its position is indeterminant as it was pushed out and over the slope during the logging road construction. I found it from the calculated position based on railroad track map of 1916.

Description of monument and accessories established to perpetuate the original location of this corner:

C. After diligent search for original stone and other bearing trees, (all of which fall within the prism of the logging road) I determine the true position of the original witness corner from the track map of 1916 for the OREGON-WASHINGTON RAILROAD AND NAVIGATION COMPANY. As the true position falls just north of the road shoulder on steep unstable bank, I set a new witness corner on the section line south of road. The monument is a 2.5 inch dia. by 30 inch long aluminum pipe set 22 inches in the ground in a mound of stone. I mark the cap:



STRYKER PLS 2060

NEW ACCESSORIES ESTABLISHED with magnetic declination of 19 deg. East

- 8" dia douglas fir bears N7W at 9.0 ft scribed "WC T3N R40E S21 BT"
- 9" dia douglas fir bears N37E at 33.2 ft scribed "WC T3N R40E S22 BT"
- 12" dia douglas fir bears S81E at 18.6 ft scribed "WC T3N R40E S27 BT"
- 16" dia douglas fir bears S32W at 30.2 ft scribed "WC T3N R40E S28 BT"

Painted red band around each bearing tree.  
Placed brass washer marked "PLS 2060" at base of each new BT blaze  
Placed LAND SURVEYOR MEMBER LSAW metal signs on each bearing tree  
Placed steel fence post at corner.

Office of..... County of.....  
State of....., I hereby certify that the within instrument was filed in this office  
for record on the..... day of.....

(COUNTY OFFICIAL)

<b>UNION COUNTY</b>	
<b>SURVEYOR</b>	
_____ (DEPUTY)	
Date Received	8-30-89
Date Filed	9-1-89
By	G. LANGLITZ, DEPUTY
File No.	165-89R

REGISTERED PROFESSIONAL LAND SURVEYOR	
OREGON JULY 15, 1983 EDWIN A. STRYKER 2060	

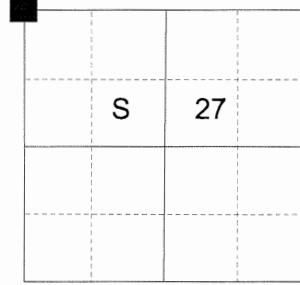
**CERTIFIED RECORD OF LAND CORNER MONUMENTATION**

**HISTORY OF ORIGINAL CORNER ESTABLISHED:**

Corner originally established by Herman D. Gradon under GLO joint contract No. 517, dated Sept. 30, 1884. Surveyor General field notes state:

79.00 chs. Grande Ronde River, runs NW. As true cor. point will come in river, I set at this place a basalt stone, 10x8x8 ins., 7 ins. in the ground for witness cor. to secs. 21, 22, 27, and 28, marked WC, with 2 notches on S. and 3 notches on E. edge from which:  
 A 10" fir bears North 80° East a dist. of 8 lks. marked T3N R40E S27 BT.  
 An 8" fir bears South 50° East a dist. of 21 lks. marked T3N R40E S34 BT.  
 An 5" fir bears South 30° West a dist. of 7 lks. marked T3N R40E S33 BT.  
 A 10" fir bears North 60° West a dist. of 12 lks. marked T3N R40E S28 BT.

T 3 N R 40 E R-13



In Union County Survey 019-89 Edwin Stryker PLS 2060 placed the corner at calculated position based on railroad track map of 1916 which placed it in the prism of a logging road. He found the dead and decaying remains of the South East bearing tree with visible blaze and scribe marks of NR40ES27BT which had been pushed over the North edge of the road. No other evidence was found. At 64.91 ft. South 0°29'29" East of true position of witness corner, Union County Monumentation Record 165-89R states: set a new witness corner on the section line South of the road. The monument is a 2 ½" x 30" aluminum pipe 22" in the ground with 2 ½" aluminum cap in a mound of stone marked as shown.

From which:

An 8" Douglas fir bears North 7° West a dist. of 9.0 ft. marked WC T3N R40E S21 BT.  
 A 9" Douglas fir bears North 37° East a dist. of 33.2 ft. marked WC T3N R40E S22 BT.  
 A 12" Douglas fir bears South 81° East a dist. of 18.6 ft. marked WC T3N R40E S27 BT.  
 A 16" Douglas fir bears South 32° West a dist. of 30.2 ft. marked WC T3N R40E S28 BT.

**DESCRIPTION OF CORNER EVIDENCE FOUND:**

Found a 2 ½" x 30" aluminum pipe 6" above ground with 2 ½" aluminum cap marked as shown in a mound of stone.

From which:

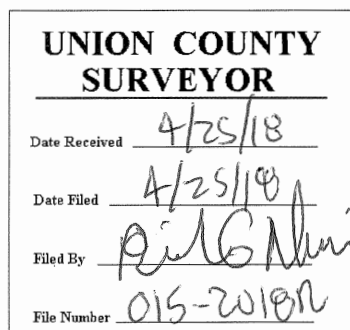
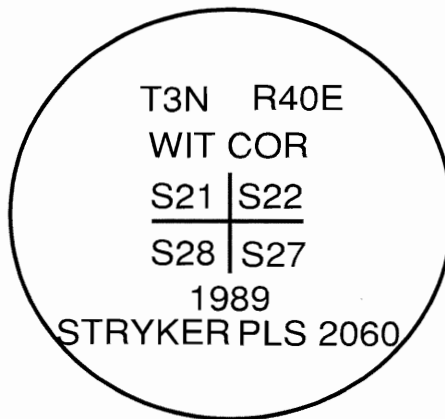
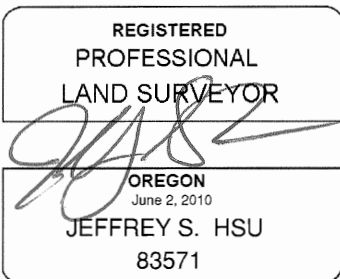
An 15" Douglas fir bears North 7° West a dist. of 9.0 ft. alive and vigorous with healed blaze.  
 A 13" Douglas fir bears North 37° East a dist. of 33.2 ft. alive and vigorous with healed blaze.  
 A 15" Douglas fir bears South 81° East a dist. of 18.6 ft. dead and standing with healed blaze.  
 A 17" Douglas fir bears South 32° West a dist. of 30.2 ft. dead and standing with healed blaze.

**DESCRIPTION OF MONUMENT AND ACCESSORIES I ESTABLISHED TO PERPETUATE THE ORIGINAL LOCATION OF THIS CORNER:**

**NEW BEARING TREES:**

A 3" Douglas fir bears South 38° East a dist. of 24.40 marked X BT.  
 A 13" Douglas fir bears South 36° West a dist. of 21.20 marked WC T3N R40E S28 BT.

Monument falls approx. 8' south of top edge of cut bank. A fence post bears North 1'. I hereby certify that the corner was perpetuated on April 24, 2018.  
 Witness: Kyle A. Tucker



I used a steel tape and magnetic compass in the establishment of the new accessories. I used 13° East declination, the distances are to a 60d spike driven into the right side of the root crown of the bearing trees. A brass washer marked OPLS 83571 is attached to the BT blaze of the new bearing trees.

# HORIZONTAL CONTROL DATA

## UNION COUNTY, OREGON

### OREGON STATE PLANE, NORTH ZONE (3601)

STA NAME: 2018025

WITNESS TO SECTION CORNER COMMON TO SECTIONS 21, 22, 27 AND 28

TWP. 3 N RGE. 40 E.

GEODETIC COORD: NAD 83(91)

DATE TIED: April 24, 2018

LAT: 45 ° 43 ' 4.53065 " N

SURVEYOR: RICK G. ROBINSON  
OPLS 2219

LONG: 117 ° 48 ' 30.72389 " W

FIRM: BAGETT, GRIFFITH, & BLACKMAN  
2006 ADAMS AVENUE  
LAGRANDE, OR 97850  
(541) 963-6092

SP. COOR: NAD 83(91)

N: 759295.915 INT FT.

E: 8889420.872 INT FT.

TYPE: GPS

THETA: 1 ° 54 ' 31.4991312 "

ORDER: SECOND CLASS: 1

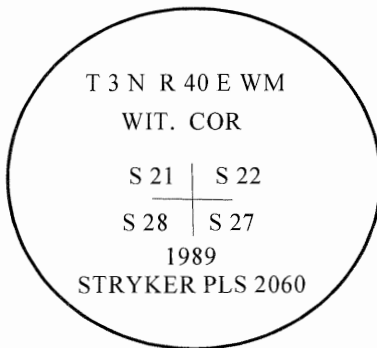
SCALE FACTOR: 0.9999405156

ELEV: 2367.38 US FT.

ELEV: DATUM: NGVD 29

**COMMENTS:**

2 1/2" aluminum monument set in mound of stone, with cap marked as shown. Corner is a Witness Corner, set 130.91 feet South of the true corner which falls in the Grande Ronde River to the North



REGISTERED  
PROFESSIONAL  
LAND SURVEYOR

OREGON  
July 17, 1986  
RICK G. ROBINSON  
2219

Renewal Date: December 31, 2018

1 METER = 3.2808333333... US FEET = 39.37 INCHES

1 METER = 3.280839895 INT'L FEET OR 1 INCH = 2.54 CM

TO CALCULATE ELEVATION FACTOR ( IN THE NORTH AMERICAN CONTINENT)

DIVIDE 20,906,000 BY (20,906,000 + ELLIPSOID ELEV. IN FEET)