

CERTIFIED RECORD OF LAND CORNER MONUMENTATION

HISTORY OF ORIGINAL CORNER ESTABLISHED:

Corner originally established by Herman D. Gradon under GLO contract 517, dated September 30, 1884. Surveyor General field notes state:

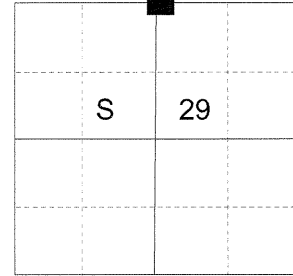
Set a basalt stone 14x10x5 ins. 9 ins. in the ground for 1/4 sec. cor., marked 1/4 on N face, from which:

A pine 36 ins. in diam bears N50°W, 42 lks. dist. marked 1/4 S BT.

A pine 8 ins. in diam. bears S30°E, 113 lks. dist. marked 1/4 S BT.

An Oregon-Washington Railroad and Navigation Company Right of Way and Track map, dated June 30, 1916 indicates the corner was found. No description of corner.

T 3 N R 40 E R-07



DESCRIPTION OF CORNER EVIDENCE FOUND:

None. As the railroad map gives a ray tie from the railroad track to this corner, I place this corner by retracement of the railroad tracks. Placing it as such, positions the corner in line with an old blaze line, running East/West.

SEE SURVEY NUMBER 028-2016

DESCRIPTION OF MONUMENT AND ACCESSORIES I ESTABLISHED

TO PERPETUATE THE ORIGINAL LOCATION OF THIS CORNER:

At position determined by survey, I set a 2 1/2" x 30" aluminum pipe with 2 1/2" aluminum cap, marked as shown below, 26 inches in the ground, in a collar of stone 2 ft. diam., from which:

NEW BEARING OBJECTS:

An 8" Douglas Fir bears North 29° East, a distance of 23.05 feet, marked 1/4 S20 BT.

A 6" Douglas Fir bears South 44° East, a distance of 15.55 feet, marked 1/4 S29 BT.

A 14"x16" Basalt outcrop bears South 59° West, a distance of 10.15 feet, marked 'X BO'

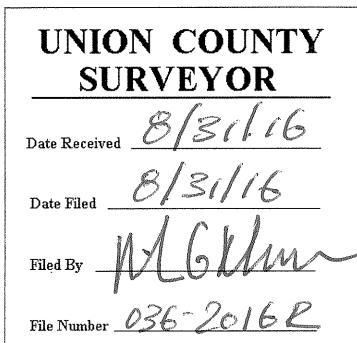
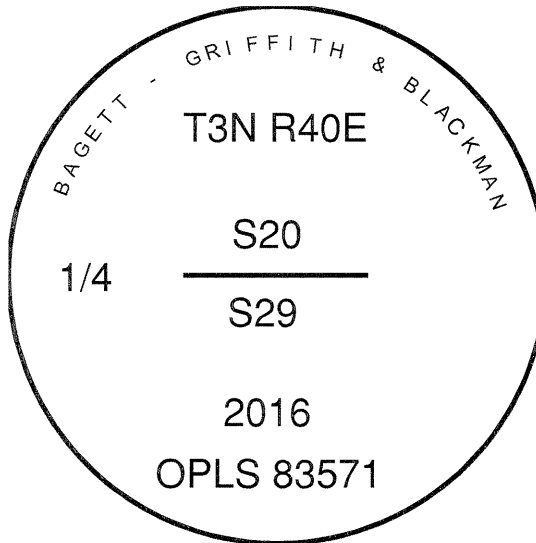
A 12" Douglas Fir bears North 15° West, a distance of 43.15 feet, marked 1/4 S20 BT.

Drove a steel fencepost approx 1 ft East of monument.

I hereby certify that this monument was set on August 26, 2016.



Renewal Date: June 30, 2017



I use a steel tape and magnetic compass in the establishment of the bearing objects. Magnetic declination used was 15° East. Distances to the new trees are to a spike in the root crown of the trees. Bearings are to a brass washer in the lower blaze marked OPLS 83571. Bearings and distance to the outcrop are to the center of the 'X'.

HORIZONTAL CONTROL DATA

UNION COUNTY, OREGON

OREGON STATE PLANE, NORTH ZONE (3601)

STA NAME: 2017027

1/4 SECTION CORNER COMMON TO SECTIONS 20 AND 29

TWP. 3 N RGE. 40 E.

GEODETIC COORD: NAD 83(91)

DATE TIED: December 13, 2017

LAT: 45 ° 43 ' 5.75118 " N

SURVEYOR: RICK G. ROBINSON
OPLS 2219

LONG: 117 ° 50 ' 22.88985 " W

FIRM: BAGETT, GRIFFITH, & BLACKMAN
2006 ADAMS AVENUE
LAGRANDE, OR 97850
(541) 963-6092

SP. COOR: NAD 83(91)

N: 759155.936 INT FT.

E: 8881463.060 INT FT.

TYPE: GPS

THETA: 1 ° 53 ' 11.9526026 "

ORDER: SECOND CLASS: 1

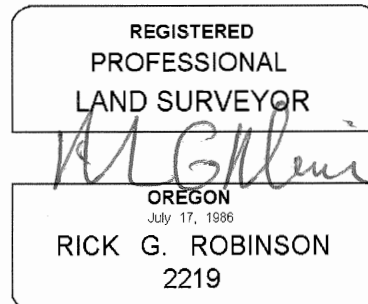
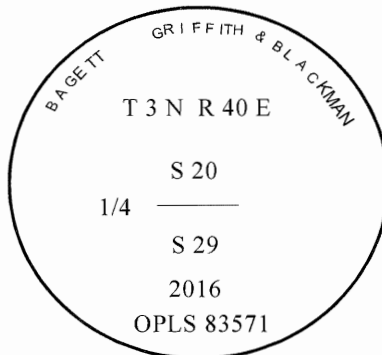
SCALE FACTOR: 0.9999405725

ELEV: 2727.80 US FT.

ELEV: DATUM: NGVD 29

COMMENTS:

2 1/2" aluminum pipe with 2 1/2" aluminum cap marked as shown, set in mound of stone.



Renewal Date: December 31, 2018

1 METER = 3.2808333333... US FEET = 39.37 INCHES

1 METER = 3.280839895 INT'L FEET OR 1 INCH = 2.54 CM

TO CALCULATE ELEVATION FACTOR (IN THE NORTH AMERICAN CONTINENT)

DIVIDE 20,906,000 BY (20,906,000 + ELLIPSOID ELEV. IN FEET)