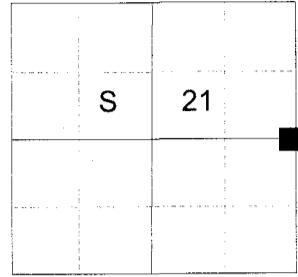


CERTIFIED RECORD OF LAND CORNER MONUMENTATION

HISTORY OF ORIGINAL CORNER ESTABLISHED:

Corner originally established by Herman Gradon under GLO contract number 517 dated Sept. 30th, 1884. Surveyor General field notes state:
Set a basalt stone 10x8x8 ins. 7 ins. in the ground for 1/4 sec. cor. marked 1/4 on W. face, from which:
A pine 36 ins. in diam. bears N 75° W 28 lks. dist. marked 1/4 S BT.
A pine 28 ins. in diam. bears N 76° E 48 lks. dist. marked 1/4 S BT.

T 3 N R 40 E P-13



In a 1916 Oregon-Washington Railroad and Navigation Company right of way map, it shows a distance and angle from the railroad centerline. No mention of type of monument found.

DESCRIPTION OF CORNER EVIDENCE FOUND:

At the position determined by retracement of the railroad, I find an old North/South fence line and a large diameter stump in proximity of the original GLO bearing and distance of the Northwest bearing tree. I cannot find any remaining scribe marks as the stump is heavily decayed. As there are no other large stumps in the area and it fits the position within 7.7 ft. of the railroad survey I accept this stump as being the remains of the original Northwest bearing tree.

SEE SURVEY NUMBER 032-2020

DESCRIPTION OF MONUMENT AND ACCESSORIES I ESTABLISHED TO MONUMENT THE ORIGINAL LOCATION OF THIS CORNER:

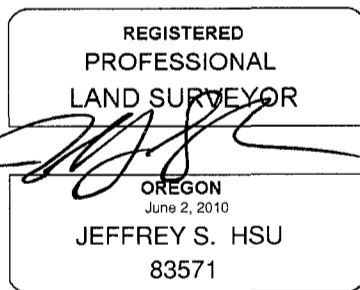
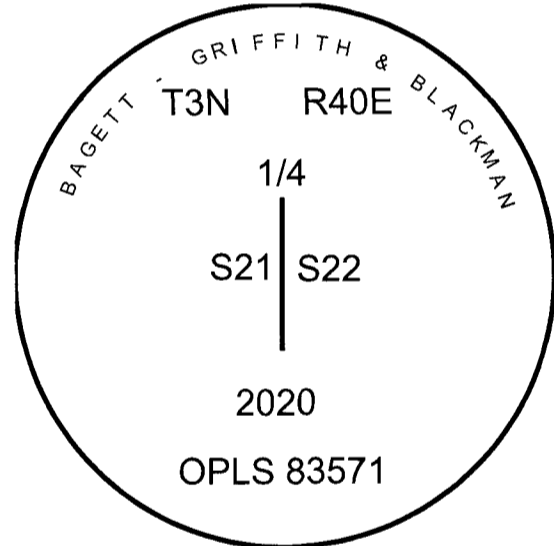
At record distance and bearing from the center of the found bearing tree remains, I set a 2 1/2" x 30" aluminum pipe, 26" in the ground with 3" aluminum cap marked as shown with mound of stone 3 ft. base to top of cap, from which:

NEW BEARING OBJECTS:

- An 18" Ponderosa Pine bears North 50° East a dist. of 24.90 ft., marked 1/4 S22 BT.
- A 20" Ponderosa Pine bears South 52° East a dist. of 32.90 ft., marked 1/4 S22 BT.
- A 19" Ponderosa Pine bears South 42° West a dist. of 61.00 ft., marked 1/4 S21 BT.
- A 21" Ponderosa Pine bears North a dist. of 14.05 ft., marked 1/4 S21 BT.

Set a steel fencepost 0.5 ft. South of corner.

I hereby certify that the corner was monumented on September 24, 2020.
Witness: Kyle A. Tucker



Renewal Date: June 30, 2021

I used a steel tape and magnetic compass in the establishment of the new accessories. I used 14° East declination, the distances are to a 60d spike driven into the right side of the root crown of the bearing trees. A brass washer marked OPLS 83571 is attached to the BT blaze of the new bearing trees.

