

**CERTIFIED RECORD OF LAND CORNER MONUMENTATION**

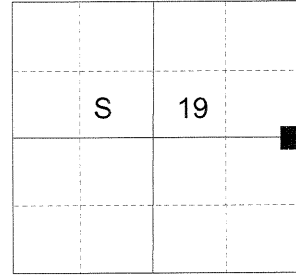
**HISTORY OF ORIGINAL CORNER ESTABLISHED:**

Corner originally established by Herman D. Gradon under GLO contract 517, dated September 30, 1884. Surveyor General field notes state:

Set a basalt stone 15x12x9 ins. 10 ins. in the ground for 1/4 sec. cor., marked 1/4 on W face, from which:

- A tamarack 4 ins. in diam. bears N51°W, 7 lks. dist. marked 1/4 S BT.
- A tamarack 5 ins. in diam. bears S84°E, 13 lks. dist. marked 1/4 S BT.

T 3 N R 40 E P-05



**DESCRIPTION OF CORNER EVIDENCE FOUND:**

An old rock jack fence corner occupies the corner position. Fences run East and South. Due to harmony with corner a half mile to the South, this fence corner was accepted as being the best available evidence of the original GLO corner position.

SEE SURVEY NUMBER 028-2016

**DESCRIPTION OF MONUMENT AND ACCESSORIES I ESTABLISHED**

**TO PERPETUATE THE ORIGINAL LOCATION OF THIS CORNER:**

At the fence corner position, I set a 2 1/2" x 30" aluminum pipe with 2 1/2" aluminum cap, marked as shown below, 22 inches in the ground, in a collar of stone 2 ft. diam., from which:

**NEW BEARING OBJECTS:**

- A 10" Ponderosa Pine bears North 74° East, a distance of 13.85 feet, marked 1/4 S20 BT.
- A 4" Douglas Fir bears South 62° East, a distance of 24.15 feet, marked 1/4 S20 BT.
- A 7" Douglas Fir bears South 66° West, a distance of 24.65 feet, marked 1/4 S19 BT.
- A 3" Douglas Fir bears North 22° West, a distance of 33.60 feet, marked X BT.

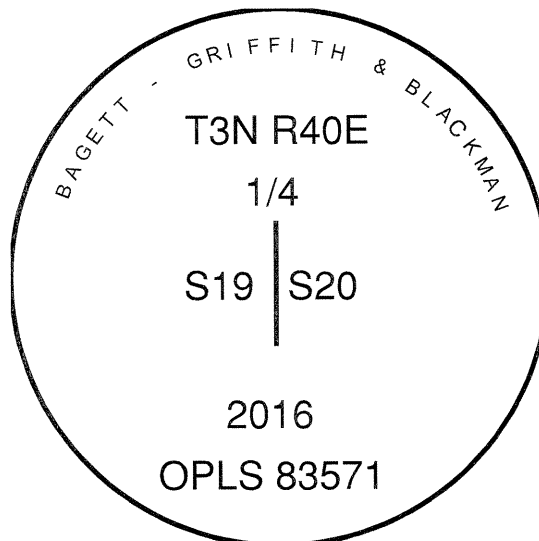
Drove a steel fencepost approx 1 ft West of monument. Corner falls on East side of North/South running logging road.

I hereby certify that this monument was set on August 30, 2016.

REGISTERED  
PROFESSIONAL  
LAND SURVEYOR

OREGON  
June 2, 2010  
JEFFREY S. HSU  
83571

Renewal Date: June 30, 2017



**UNION COUNTY  
SURVEYOR**

Date Received 8/31/16  
 Date Filed 8/31/16  
 Filed By [Signature]  
 File Number 032-2016R

I use a steel tape and magnetic compass in the establishment of the bearing objects. Magnetic declination used was 15° East. Distances to the new trees are to a spike in the root crown of the trees. Bearings are to a brass washer in the lower blaze marked OPLS 83571.

# HORIZONTAL CONTROL DATA

## UNION COUNTY, OREGON

### OREGON STATE PLANE, NORTH ZONE (3601)

STA NAME: 2017028

1/4 SECTION CORNER COMMON TO SECTIONS 19 AND 20

TWP. 3 N RGE. 40 E.

GEODETIC COORD: NAD 83(91)

DATE TIED: December 13, 2017

LAT: 45 ° 43 ' 32.17319 " N

SURVEYOR: RICK G. ROBINSON  
OPLS 2219

LONG: 117 ° 51 ' 0.45056 " W

FIRM: BAGETT, GRIFFITH, & BLACKMAN  
2006 ADAMS AVENUE  
LAGRANDE, OR 97850  
(541) 963-6092

SP. COOR: NAD 83(91)

N: 761743.120 INT FT.

E: 8878711.844 INT FT.

TYPE: GPS

THETA: 1 ° 52 ' 45.3150715 "

ORDER: SECOND CLASS: 1

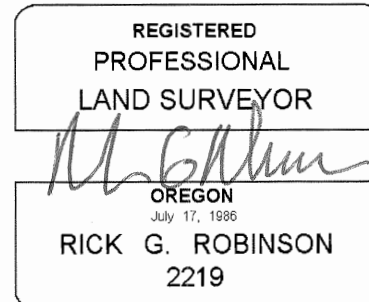
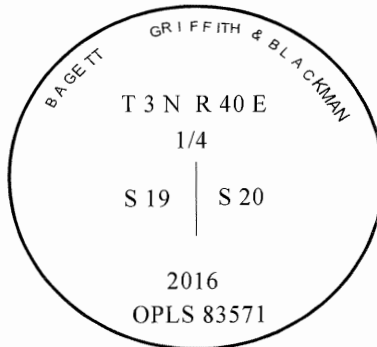
SCALE FACTOR: 0.9999418112

ELEV: 3151.12 US FT.

ELEV: DATUM: NGVD 29

**COMMENTS:**

2 1/2" aluminum pipe with 2 1/2" aluminum cap marked as shown, set in mound of stone.



Renewal Date: December 31, 2018

1 METER = 3.2808333333... US FEET = 39.37 INCHES

1 METER = 3.280839895 INT'L FEET OR 1 INCH = 2.54 CM

TO CALCULATE ELEVATION FACTOR ( IN THE NORTH AMERICAN CONTINENT)

DIVIDE 20,906,000 BY (20,906,000 + ELLIPSOID ELEV. IN FEET)