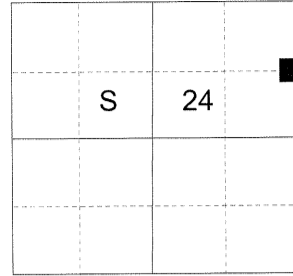


**CERTIFIED RECORD OF LAND CORNER MONUMENTATION**

**HISTORY OF ORIGINAL CORNER ESTABLISHED:**

Corner not established.

T 3 N R 39 E O-25



**DESCRIPTION OF CORNER EVIDENCE FOUND:**

None.

See Union County Survey 009-2020

**DESCRIPTION OF MONUMENT AND ACCESSORIES I ESTABLISHED TO MONUMENT THE ORIGINAL LOCATION OF THIS CORNER:**

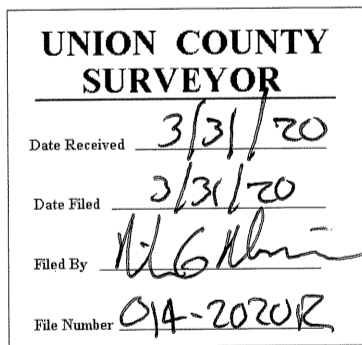
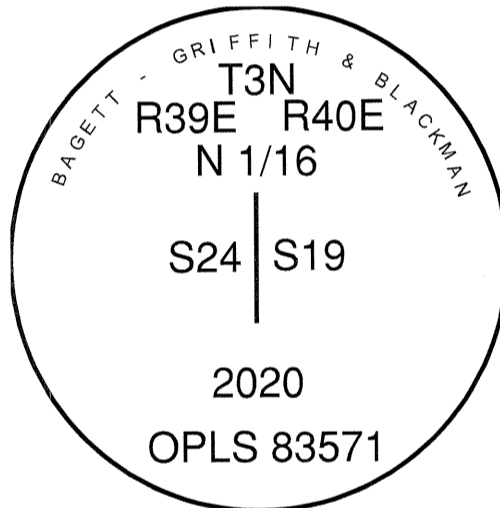
At proportionate position by survey: I set a 5/8" x 30" iron pin, 28" in the ground, with 2 1/2" aluminum cap marked as shown below, from which:

**NEW BEARING OBJECTS:**

- A 5" Ponderosa Pine bears South 88° East a dist. of 34.40 ft., marked N 1/16 S19 BT.
- A 5" Ponderosa Pine bears North 16° West a dist. of 6.40 ft., marked N 1/16 S24 BT.

An East/West/North bearing fence corner bears Northwest approx. 10 ft.  
A North/South bearing forest road bears East approx. 10 ft.

I hereby certify that the corner was perpetuated on March 27, 2020.  
Witness: Kyle A. Tucker



I used a steel tape and magnetic compass in the establishment of the new accessories. I used 14° East declination, the distances are to a 60d spike driven into the right side of the root crown of the bearing trees. A brass washer marked OPLS 83571 is attached to the BT blaze of the new bearing trees.