

**CERTIFIED RECORD OF LAND CORNER MONUMENTATION**

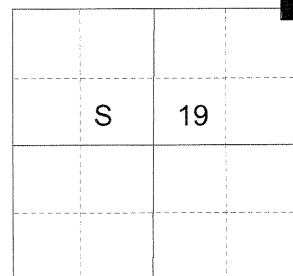
**HISTORY OF ORIGINAL CORNER ESTABLISHED:**

Corner originally established by Herman D. Gradon under GLO contract 517, dated September 30, 1884. Surveyor General field notes state:

Set a basalt stone 10x8x8 ins. 7 ins. in the ground for cor. to secs. 17, 18, 19 and 20, marked with 3 notches on S and 5 notches on E. edges, from which:

- A pine 8 ins. in diam. bears N60°E, 19 lks. dist. marked T3N R40E S17 BT.
- A pine 8 ins. in diam. bears S60°E, 56 lks. dist. marked T3N R40E S20 BT.
- A fir 12 ins. in diam. bears S44°W, 35 lks. dist. marked T3N R40E S19 BT.
- A pine 30 ins. in diam. bears N29°W, 135 lks. dist. marked T3N R40E S18 BT.

T 3 N R 40 E N-05



**DESCRIPTION OF CORNER EVIDENCE FOUND:**

Found the original NW bearing tree, a pine, uprooted, downed and decaying, approx. 22" diam with scribe marks "T3NR40ES18 BT" clearly visible.

SEE SURVEY NUMBER 028-2016

**DESCRIPTION OF MONUMENT AND ACCESSORIES I ESTABLISHED**

**TO PERPETUATE THE ORIGINAL LOCATION OF THIS CORNER:**

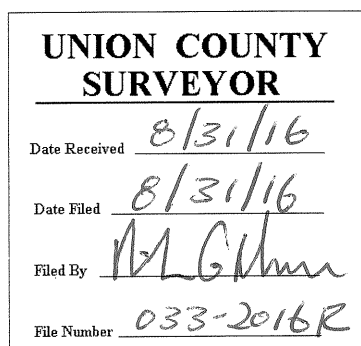
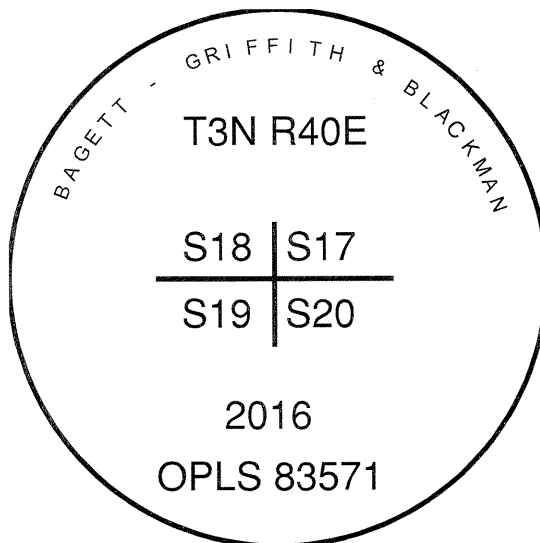
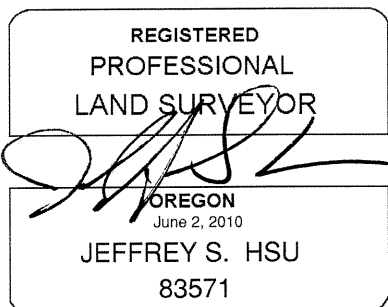
At record bearing and distance from the uprighted position of the found tree, I set a 2 1/2" x 30" aluminum pipe with 2 1/2" aluminum cap, marked as shown below, 24 inches in the ground, in a collar of stone 1 ft. diam., from which:

**NEW BEARING OBJECTS:**

- An 11" Western Larch bears North 9° East, a distance of 67.40 feet, marked T3N R40E S17 BT.
- A 9" Ponderosa Pine bears South 18° East, a distance of 13.55 feet, marked T3N R40E S20 BT.
- A 9" White Fir bears South 45° West, a distance of 19.55 feet, marked T3N R40E S19 BT.
- A 9" Douglas Fir bears North 18° West, a distance of 64.40 feet, marked T3N R40E S18 BT.

Drove a steel fencepost approx 1 ft. North of monument. Corner falls approx. 150 feet East of a gravel pit.

I hereby certify that this monument was set on August 24, 2016.



I use a steel tape and magnetic compass in the establishment of the bearing objects. Magnetic declination used was 15° East. Distances to the new trees are to a spike in the root crown of the trees. Bearings are to a brass washer in the lower blaze marked OPLS 83571.