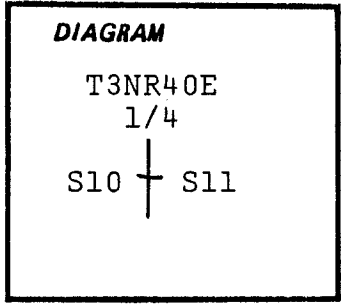


CERTIFIED RECORD OF LAND CORNER MONUMENTATION

Index File No. G-17

History of original corner establishment:

Corner was originally established by H. D. Graden, under G.L.O. contract No. 517, in November, 1884. Surveyors General's notes state: "Set a basalt stone 16 x 13 x 9 ins., 11 ins. in the ground for 1/4 sec. cor., marked 1/4 on west face from which: A fir, 8 ins. diam., bears N60°E, 20 lks. dist., marked 1/4S BT. A fir 6 ins. diam., bears S52°W., 17 lks. dist., marked 1/4S BT."

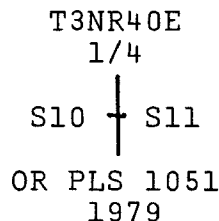


Description of corner evidence found:

Corner falls on steep hillside and no trace of corner monument or bearing trees could be found.

Description of monument and accessories established to perpetuate the original location of this corner:

At single proportionate distance between found section corners, set 2 1/2" x 30" galvanized pipe and brass cap marked: Corner falls in small slide area. Removed loose rock and set pipe 16" in the ground. Placed mound of stone around, leaving pipe projecting 8" above. From which: A 24" fir bears S20°W, 69.4 ft. scribed 1/4 S10 BT. A 6" fir bears N21°W, 29.5 ft. scribed 1/4 SXX BT. No trees within limits on east side. Painted blazes red and 6" red band around. Placed 54-3s and brass washers stamped PLS 1051 on BTs. Placed 54-4 on steel fence post 3' West of corner.



I hereby certify that the above corner monument was reestablished as herein described.

Witnesses: David L. Landers
Robert Stevens
Ray McVey

July 11, 1979

REGISTERED PROFESSIONAL LAND SURVEYOR

Barry B. Barbour

OREGON
OCT. 17, 1975
BARRY B. BARBOUR
1051

Office of.....County Surveyor..... County of..... Union.....
State of.....Oregon..... I hereby certify that the within instrument was filed in this office
for record on the 26 day of July, 1979
..... by
(COUNTY OFFICIAL) (DEPUTY)

UNION COUNTY SURVEYOR
Date Received _____
Date Filed _____
By _____
File No. 203-83R

CERTIFIED RECORD OF LAND CORNER MONUMENTATION

History of original corner establishment:

Index: G-17

Quarter corner Sec. 10 and 11, T.3N., R.40E., W.M.
Original corner was set by Graden in Nov. 1884.

His notes read:

Set a basalt stone 15x13x9 ins., 11 ins. in the
ground for 1/4 sec. cor., marked 1/4 on west face
from which:

A fir, 8 ins. diam., bears N60°E, 20 lks. dist.,
marked 1/4S BT.

A fir, 6 ins. diam., bears S52°W, 17 lks. dist.,
marked 1/4S BT.

In 1979, PLS 1051 reestablished this corner by
proportion. His record reads:

Set 2 1/2" x 30" galvanized pipe and brass cap marked:
from which:

A 24" fir bears S20°W, 69.4 ft. scribed 1/4 S10 BT.

A 6" fir bears N21°W, 29.5 ft. scribed 1/4 SXX BT.

No trees within limits on east side.

1	DIAGRAM	1
1		1
1	T3N R40E	1
1	1/4	1
1	1	1
1	S10 - S11	1
1	1	1
1	OR PLS 1051	1
1	1979	1
1		1

Description of corner evidence found:

Found the iron pipe as described with brass cap stamped as shown in the
diagram. From this monument:

A 25" dbh Douglas Fir, S18°21'W, 68.7' with healed blaze.

A 11" dbh Douglas Fir, N27°42'W, 29.2', with healed blaze.

Description of monument and accessories I established to perpetuate the
original location of this corner:

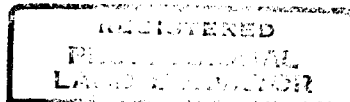
The bearings were based on the recorded bearing between the 1/4 section
corner and the CW 1/16 corner of section 10 as recorded by PLS 1051 in
Union County survey 73-79. I set the following new witness trees:

A 12" dbh Douglas Fir bears N68°56'E, 107.1' scribed 1/4 S11 BT;

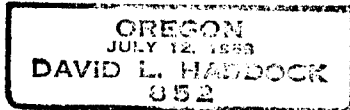
A 23" dbh Douglas Fir bears S08°46'E, 71.8' scribed 1/4 S11 BT.

An aluminum washer stamped PLS 852 is nailed between the letters B and T
on each new tree. All four living trees have LSM and BT signs attached.
Painted 6" red bands around all four living trees and painted the scribe
blazes red.

This work was done August 5, 1992.



David L. Haddock



Office of _____ County of _____
State of _____, I hereby certify that the within instrument was filed
in this office for record on the _____ day of _____, 19____.
_____ by _____
(COUNTY OFFICIAL) (DEPUTY)

Form 56-7100-57 (9/71)

UNION COUNTY SURVEYOR	
Date Received	<u>9/28/92</u>
Date Filed	<u>10/2/92</u>
By	<u>Gregory T. Blake</u>
File No.	<u>072-1992R</u>