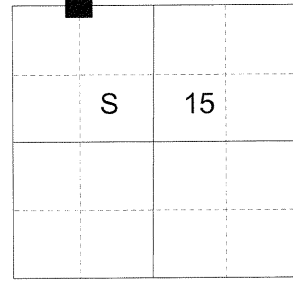


CERTIFIED RECORD OF LAND CORNER MONUMENTATION

HISTORY OF ORIGINAL CORNER ESTABLISHED:

Corner not previously established.

T 3 N R 39 E J-14



DESCRIPTION OF CORNER EVIDENCE FOUND:

Corner not previously established.

SEE SURVEY NUMBER 050-2018

DESCRIPTION OF MONUMENT AND ACCESSORIES I ESTABLISHED TO PERPETUATE THE ORIGINAL LOCATION OF THIS CORNER:

At position determined by survey, I set a 5/8" x 30" iron pin, 27" in the ground, with 2 1/2" aluminum cap marked as shown below marked as shown below, from which:

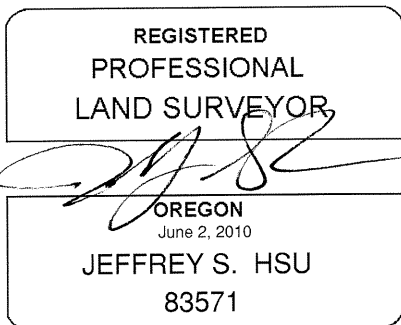
NEW BEARING OBJECTS:

An 11" Douglas Fir bears North 38° East a dist. of 7.90 ft., marked W 1/16 S10 BT.
A 7" White Fir bears South 7° East a dist. of 7.20 ft., marked W 1/16 S15 BT.

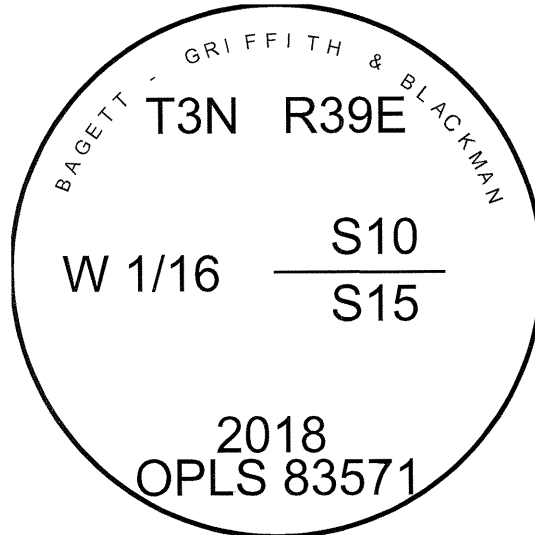
Set steel fence post approx. 1 ft. North of monument.

I hereby certify that the corner was monumented on November 29, 2018.

Witness: Kyle A. Tucker



Renewal Date: June 30, 2019



UNION COUNTY SURVEYOR

Date Received 12/10/18

Date Filed 12/10/18

Filed By 070-2018R

File Number [Signature]
Deputy

I used a steel tape and magnetic compass in the establishment of the new accessories. I used 13° East declination, the distance is to a 60d spike driven into the right side of the root crown of the bearing trees. A brass washer marked OPLS 83571 is attached to the BT blaze of the new bearing trees.