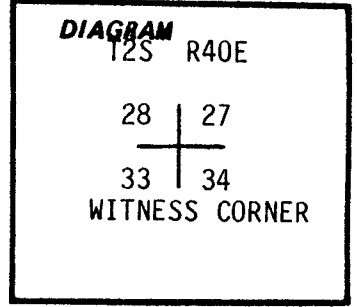


CERTIFIED RECORD OF LAND CORNER MONUMENTATION

History of original corner establishment:

Original survey by David P. Thompson, Contract No. 103, 1863;

Set post for corner to Sections 27, 28, 33 and 34 in mound of stone.



Description of corner evidence found:

No evidence of the original corner monument was found.

**UNION COUNTY SURVEYOR**

---

Date Received 5-21-86  
Date Filed 5-22-86  
By G. LANGLITZ, DEPUTY  
File No. 42-86 R

Description of monument and accessories established to perpetuate the original location of this corner:

Refer to Union County Record Survey No. 13-86. Based on the survey and evaluation of evidence as discussed in Union Co. Survey 13-86, we accept the existing corner of prominent fences running North, South, and West as the best available evidence of the original position of this section corner.

The corner position is presently occupied by a 2" dia. iron pipe fence corner post, making it impractical to monument the actual corner position. Therefore, we establish a Witness Corner at a point bearing S89°47'48" E 2.00 feet from the True Corner Position.

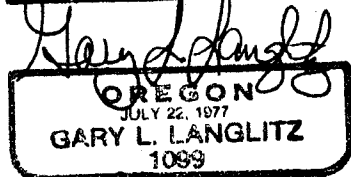
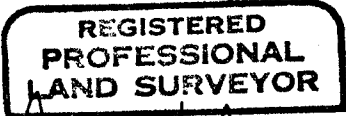
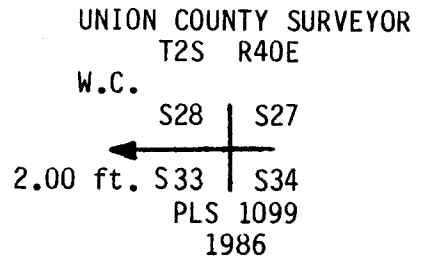
At the point for the Witness Corner, we set a 2"x30" Alum. Pipe, 28" in the ground, with aluminum cap attached, marked:

There are no corner accessories available.

This corner is located on a SW slope in open pasture land.

April 23, 1986

Gary Langlitz, PLS 1099  
Deputy Union County Surveyor  
Kevin Leckenby



Office of..... County of.....

State of....., I hereby certify that the within instrument was filed in this office for record on the..... day of....., 19.....

..... by .....  
(COUNTY OFFICIAL) (DEPUTY)