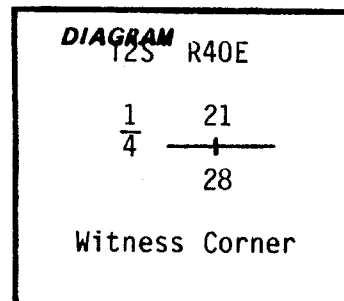


CERTIFIED RECORD OF LAND CORNER MONUMENTATION

History of original corner establishment:

Original survey by David P. Thompson, Contract No. 103, 1863;

Set post for 1/4 Sec. Corner in mound of earth with charred stake, pits and trenches as per instructions.



Description of corner evidence found:

No evidence of the original corner monument was found.

UNION COUNTY SURVEYOR

Date Received 5-21-86

Date Filed 5-22-86

By G. LANGLITZ, DEPUTY

File No. 45-86 R

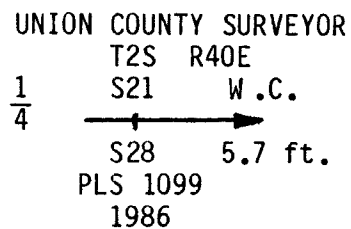
Description of monument and accessories established to perpetuate the original location of this corner:

Refer to Union County Record Survey No. 13-86. Based on the survey and evaluation of evidence as discussed in Union County Survey 13-86, we accept the existing corner of prominent fences running North, East and West, and the down remains of a fence running South, as the best available evidence of the original position of this 1/4 corner.

It is impractical to monument the true corner position, therefore, we establish a Witness Corner at a point bearing N89°45'28"W 5.70 ft. from the True Corner Position. At the point for the Witness Corner, we set a 2"x30" aluminum pipe, 27" in the ground beneath an E-W fenceline, with aluminum cap, marked:

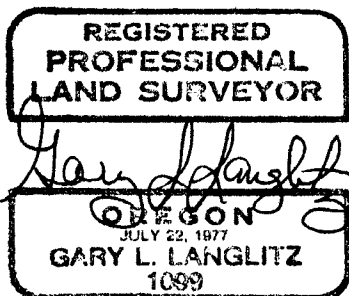
There are no corner accessories available.

This corner is located on a moderate SW slope in open pasture land.



April 24, 1986

Gary Langlitz, LS 1099
Deputy Union County Surveyor
Kevin Leckenby



Office of..... County of.....
State of....., I hereby certify that the within instrument was filed in this office
for record on the..... day of....., 19.....

..... by
(COUNTY OFFICIAL) (DEPUTY)