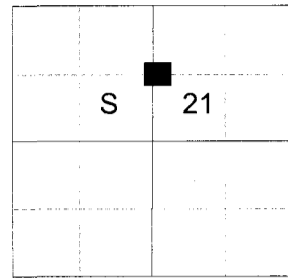


**CERTIFIED RECORD OF LAND CORNER MONUMENTATION**

**HISTORY OF ORIGINAL CORNER ESTABLISHED:**

Corner not previously established.

T 2 S R 40 E O-11



**DESCRIPTION OF CORNER EVIDENCE FOUND:**

None. An old car frame being used as a fence corner to North and West bearing fence lines bears South 58° West, a dist. of 33.31 ft. from surveyed position.

SEE SURVEY NUMBER 029-2020

**DESCRIPTION OF MONUMENT AND ACCESSORIES I ESTABLISHED TO MONUMENT THE ORIGINAL LOCATION OF THIS CORNER:**

At position by survey, I set a 5/8" x 30" iron pin, 28" in the ground with 2 1/2" aluminum cap marked as shown below,  
from which:

**NEW BEARING OBJECTS:**

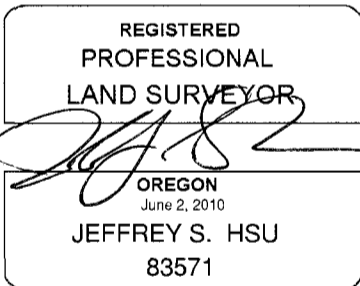
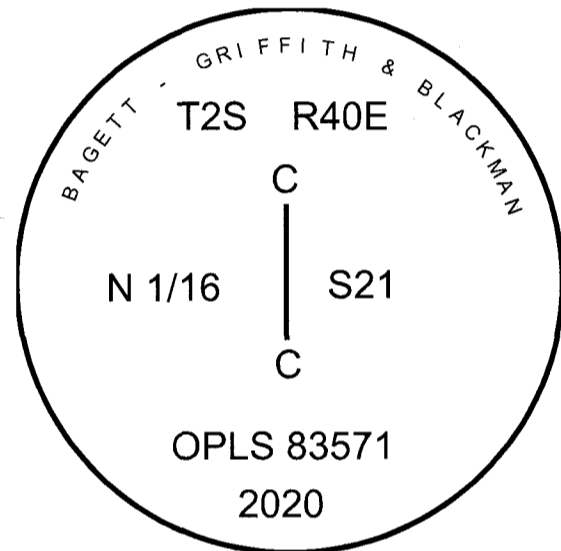
A 5/8" x 30" iron pin bears South 66°13' East a dist. of 8.33 ft., with 1 1/2" aluminum cap marked S RP.  
A 5/8" x 30" iron pin bears North 48°55' West a dist. of 9.56 ft., with 1 1/2" aluminum cap marked N RP.

Set steel fence post approx. 0.5 ft. North.

Falls on steep West aspect.

I hereby certify that the corner was monumented on August 10, 2020.

Witness: Kyle A. Tucker



Renewal Date: June 30, 2021

I used a Leica GS18 with RTK in the establishment of the new accessories. Basis of Bearing is as per Survey 029-2020. Distances and bearings are to the center of the aluminum caps.

**UNION COUNTY SURVEYOR**

Date Received 8/17/20

Date Filed 8/17/20

Filed By [Signature]

File Number 054-2020R