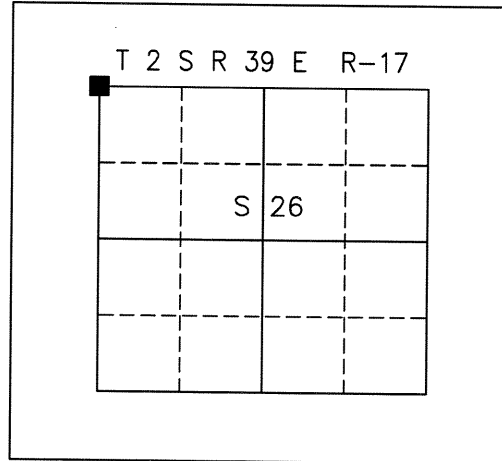


CERTIFIED RECORD OF LAND CORNER MONUMENT

HISTORY OF ORIGINAL CORNER ESTABLISHMENT:

Corner originally established by D. Thompson under GLO Contract Number 103, with an accepted date of January 20th, 1864. Surveyor General record states:

Set post for section corner in mound of earth, with charred stake, pits, trench as per instructions.



DESCRIPTION OF CORNER EVIDENCE FOUND:

FOUND BROKEN PIPE, NO CAP

DESCRIPTION OF MONUMENT AND ACCESSORIES THAT I ESTABLISHED TO PERPETUATE THE ORIGINAL LOCATION OF THIS CORNER:

SET 3/4" REBAR, 30" LONG, INSIDE PIPE, WITH 4" SQUARE ALUM. CAP, STAMPED "S22 S23 S26 S27 T2S R39E, 2019, RPLS 85504", 1.5' BELOW THE GROUND SURFACE

ACCESSORIES (BEARING OBJECTS):

- Set 5/8" Rebar, 24" long, with 2" Dia. Alum. Cap, stamped "TIE", 1.5' below the ground surface, that bears S68°E from set monument, 24.1 feet.
- Set 5/8" Rebar, 24" long, with 2" Dia. Alum. Cap, stamped "TIE", 1.5' below the ground surface, that bears N08°W from set monument, 8.1 feet.
- Set 5/8" Rebar, 24" long, with 2" Dia. Alum. Cap, stamped "TIE", 1.5' below the ground surface, that bears S81°W from set monument, 24.0 feet.
- Set 5/8" Rebar, 24" long, with 2" Dia. Alum. Cap, stamped "TIE", 1.5' below the ground surface, that bears S01°W from set monument, 23.8 feet.

I hereby certify that the corner was found set on July 12th, 2019.

Witnessed by: Kevin Kenna & Seth Gould

REGISTERED
PROFESSIONAL
LAND SURVEYOR

OREGON
NOVEMBER 7, 2011
VERNEN KALANI LEE
85504

EXPIRES: 12/31/2020

UNION COUNTY
SURVEYOR

DATE RECEIVED: 9/20/19
DATE FILED: 9/24/19
FILED BY: *[Signature]*
FILE NUMBER: 051-2019R

T2S R39E

S 22 | S 23

S 27 | S 26

2019

RPLS 85504

FIELD CREW USED A COMPASS OR GPS WITH STEEL TAPE FOR ESTABLISHMENT OF THE NEW ACCESSORIES. ALL DISTANCES STATED ARE HORIZONTAL DISTANCES FROM CENTER OF SET ALUMINUM CAP TO THE STATED ACCESSORY.

R-17

HORIZONTAL CONTROL DATA

UNION COUNTY, OREGON

OREGON STATE PLANE, NORTH ZONE (3601)

STA NAME: 2020010

SECTION CORNER COMMON TO SECTIONS 22, 23, 26, AND 27

TWP. 2 S RGE. 39 E.

GEODETIC COORD: NAD 83(91)

DATE TIED: JANUARY 8, 2019

LAT: 45 ° 22 ' 11.23120 " N

SURVEYOR: RICK G. ROBINSON
OPLS 2219

LONG: 117 ° 54 ' 41.74639 " W

FIRM: BAGETT, GRIFFITH, & BLACKMAN
2006 ADAMS AVENUE
LAGRANDE, OR 97850
(541) 963-6092

SP. COOR: NAD 83(91)

N: 631566.055 INT FT.

E: 8867177.190 INT FT.

TYPE: GPS

THETA: 1 ° 50 ' 8.37516496 "

ORDER: SECOND CLASS: 1

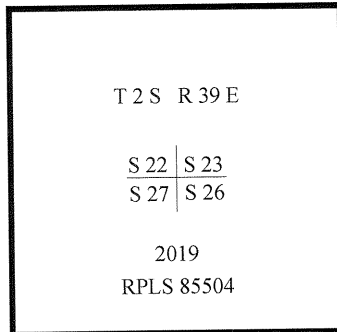
SCALE FACTOR: 0.9999007259

ELEV: 2690.90 US FT.

ELEV: DATUM: NGVD 29

COMMENTS:

5/8" iron pin with 4" square aluminum cap,
18" below ground, marked as shown



REGISTERED
PROFESSIONAL
LAND SURVEYOR

OREGON
July 17, 1986
RICK G. ROBINSON
2219

Renewal Date: December 31, 2020

1 METER = 3.2808333333... US FEET = 39.37 INCHES

1 METER = 3.280839895 INT'L FEET OR 1 INCH = 2.54 CM

TO CALCULATE ELEVATION FACTOR (IN THE NORTH AMERICAN CONTINENT)

DIVIDE 20,906,000 BY (20,906,000 + ELLIPSOID ELEV. IN FEET)