

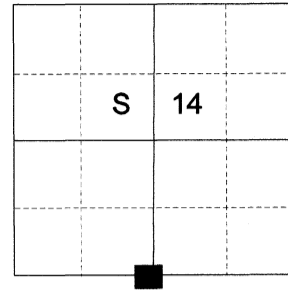
**CERTIFIED RECORD OF LAND CORNER MONUMENTATION**

**HISTORY OF ORIGINAL CORNER ESTABLISHED:**

Corner established under GLO Contract No. 103, dated September 3, 1863, executed by David P. Thompson. Surveyor General Field Notes state:

Set post for 1/4 section corner in mound of Earth with charred stake pits trench as per instructions.

T 2 S R 39E N-19



**DESCRIPTION OF CORNER EVIDENCE FOUND:**

None.

SEE SURVEY NUMBER 019-2021

**DESCRIPTION OF MONUMENT AND ACCESSORIES I ESTABLISHED TO MONUMENT THE ORIGINAL LOCATION OF THIS CORNER:**

At position determined by survey, I set a 5/8" x 30" iron pin with 2" brass cap, marked as shown below, in 4" concrete collar, 30" in the ground, from which:

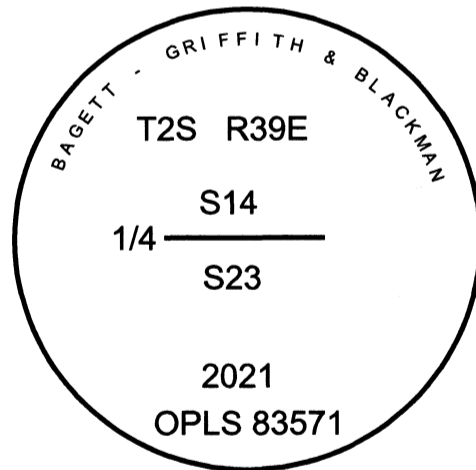
**NEW BEARING OBJECTS:**

- A 12" power pole bears North 40° East, a distance of 41.71 feet, marked 036145001
- A 5/8" x 30" iron pin bears South 42°50' East, a distance of 30.98 feet, with 1 1/2" aluminum cap marked BGB SURVEY MARKER SE RP
- A 10" power pole bears South 5° West, a distance of 18.37 feet, marked 036234999
- A 5/8" x 30" iron pin bears North 45°11' West, a distance of 34.66 feet, with 1 1/2" aluminum cap marked BGB SURVEY MARKER NW RP

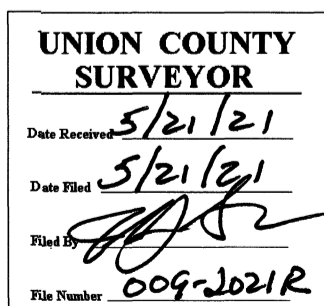
Monument falls in the center line of Market Lane

I hereby certify that the corner was monumented on May 17, 2021.

Witness: Kyle Tucker, Emmitt Ambert



Renewal Date: June 30, 2021



I used a Leica GS18 with RTK in the establishment of the new accessories. Bearings and distances are measured to the center of the aluminum cap. Bearings to the power pole are to the center of the pole. Distances are to a spike in the side of the pole. Basis of bearing is as per Survey Number 019-2021.

**HORIZONTAL CONTROL DATA**  
**UNION COUNTY, OREGON**  
**OREGON STATE PLANE, NORTH ZONE (3601)**

STA NAME: 20220008

1/4 SECTION CORNER COMMON TO SECTIONS 14 AND 23

TWP. 2 S RGE. 39 E.

GEODETIC COORD: NAD 83(91)

DATE TIED: February 11, 2022

LAT: 45 ° 23 ' 3.52204 " N

SURVEYOR: JEFFREY S. HSU  
OPLS 83571

LONG: 117 ° 54 ' 4.97621 " W

FIRM: BAGETT, GRIFFITH, & BLACKMAN  
2006 ADAMS AVENUE  
LAGRANDE, OR 97850  
(541) 963-6092

SP. COOR: NAD 83(91)

N: 636943.372 INT FT.

E: 8869630.399 INT FT.

TYPE: GPS

THETA: 1 ° 50 ' 34.452062 "

ORDER: SECOND CLASS: 1

SCALE FACTOR: 0.999901646168

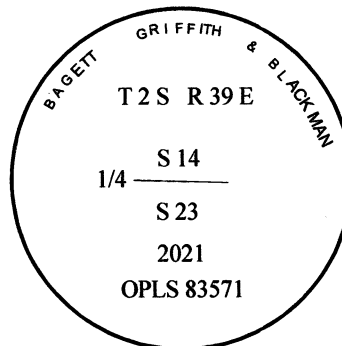
ELEV: 2685.32 US FT.

ELEV: DATUM: NGVD 29

---

COMMENTS:

5/8" iron pin with 2" Brass cap in concrete collar, marked as shown, set flush with road surface



Renewal Date: June 30, 2023

1 METER = 3.2808333333... US FEET = 39.37 INCHES

1 METER = 3.280839895 INT'L FEET OR 1 INCH = 2.54 CM

TO CALCULATE ELEVATION FACTOR ( IN THE NORTH AMERICAN CONTINENT)

DIVIDE 20,906,000 BY (20,906,000 + ELLIPSOID ELEV. IN FEET)

GEOID MODEL : 2012B