

CERTIFIED RECORD OF LAND CORNER MONUMENTATION

HISTORY OF ORIGINAL CORNER ESTABLISHED:

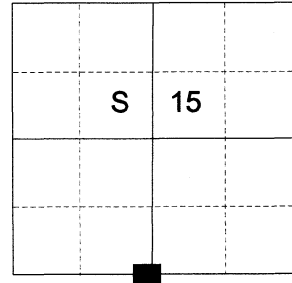
Corner established under GLO Contract No. 103, dated September 3, 1863, executed by David P. Thompson. Surveyor General Field Notes state::

Set post for 1/4 section corner in mound of Earth with charred stake pits trench as per instructions.

Corner not found and reset by J.L. Curtis in Old Book Surveys Page 277. Field notes state:

Set 1/4 Sec. corner between Section 15 and 22. A rock containing 17.25 solid inches marked 1/4 S.

T 2 S R 39E N-15



DESCRIPTION OF CORNER EVIDENCE FOUND:

None. Corner falls at intersection of Market Lane and Ruckman Road.

SEE SURVEY NUMBER 019-2021

DESCRIPTION OF MONUMENT AND ACCESSORIES I ESTABLISHED TO MONUMENT THE ORIGINAL LOCATION OF THIS CORNER:

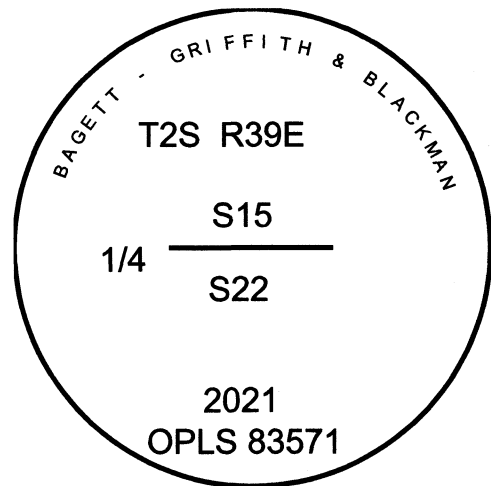
At position determined by survey, I set a 5/8" X 30" iron pin with 2" brass cap, marked as shown below, in 4" concrete collar, 30" in the ground, from which:

NEW BEARING OBJECTS:

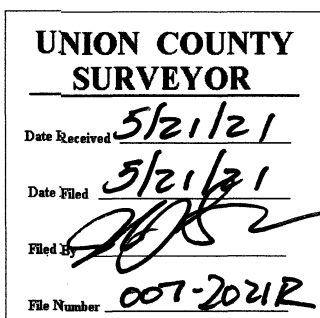
- A 5/8" x 30" iron pin bears North 57°12' East, a distance of 56.09 feet, with 1 1/2" aluminum cap marked BGB SURVEY MARKER NE RP
- A 5/8" x 30" iron pin bears South 55°23' East, a distance of 45.71 feet, with 1 1/2" aluminum cap marked BGB SURVEY MARKER SE RP
- A 5/8" x 30" iron pin bears South 51°30' West, a distance of 42.30 feet, with 1 1/2" aluminum cap marked BGB SURVEY MARKER SW RP
- A 12" power pole bears North 59° West, a distance of 51.60 feet, marked 036154901

I hereby certify that the corner was monumented on May 17, 2021.

Witness: Kyle Tucker, Emmitt Ambert



Renewal Date: June 30, 2021



I used a Leica GS18 with RTK in the establishment of the new accessories. Bearings and distances are measured to the center of the aluminum cap. Bearings to the power pole are to the center of the pole. Distances are to a spike in the side of the pole. Basis of bearing is as per Survey Number 019-2021.

HORIZONTAL CONTROL DATA
UNION COUNTY, OREGON
OREGON STATE PLANE, NORTH ZONE (3601)

STA NAME: 20220006

1/4 SECTION CORNER COMMON TO SECTIONS 15 AND 22

TWP. 2 S RGE. 39 E.

GEODETIC COORD: NAD 83(91)

DATE TIED: February 11, 2022

LAT: 45 ° 23 ' 3.45929 " N

SURVEYOR: JEFFREY S. HSU
OPLS 83571

LONG: 117 ° 55 ' 19.75469 " W

FIRM: BAGETT, GRIFFITH, & BLACKMAN
2006 ADAMS AVENUE
LAGRANDE, OR 97850
(541) 963-6092

SP. COOR: NAD 83(91)

N: 636766.080 INT FT.

E: 8864296.578 INT FT.

TYPE: GPS

THETA: 1 ° 49 ' 41.420211 "

ORDER: SECOND CLASS: 1

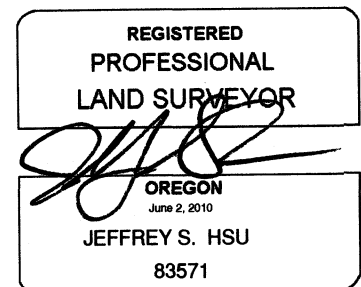
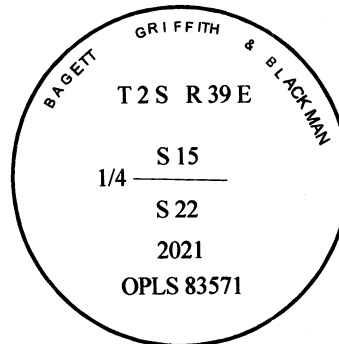
SCALE FACTOR: 0.999901645025

ELEV: 2696.79 US FT.

ELEV: DATUM: NGVD 29

COMMENTS:

5/8" iron pin with 2" Brass cap in concrete collar, marked as shown, set flush with road surface



Renewal Date: June 30, 2023

1 METER = 3.2808333333... US FEET = 39.37 INCHES

1 METER = 3.280839895 INT'L FEET OR 1 INCH = 2.54 CM

TO CALCULATE ELEVATION FACTOR (IN THE NORTH AMERICAN CONTINENT)

DIVIDE 20,906,000 BY (20,906,000 + ELLIPSOID ELEV. IN FEET)

GEOID MODEL : 2012B