

CERTIFIED RECORD OF LAND CORNER MONUMENTATION

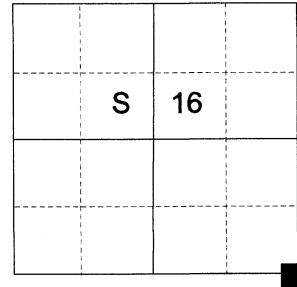
HISTORY OF ORIGINAL CORNER ESTABLISHED:

Corner established under GLO Contract No. 103, dated September 3, 1863, executed by David P. Thompson. Surveyor General Field Notes state:

Set post for corner to sections 15,16,21,22 in mound of Earth with charred stake pits trench as per instructions.

Corner recovered by J.L Curtis in Old Book Survey Page 277. No description of monument.

T 2 S R 39E N-13



DESCRIPTION OF CORNER EVIDENCE FOUND:

The intersection of Market Lane and a prominent fence line to the North falls very harmoniously with record measurements to adjacent corners. I accept this as the best available evidence of the original corner position.

SEE SURVEY NUMBER 019-2021

DESCRIPTION OF MONUMENT AND ACCESSORIES I ESTABLISHED TO MONUMENT THE ORIGINAL LOCATION OF THIS CORNER:

At the intersection of the extension of a North/South running fenceline and the centerline of Market Lane, I set a 5/8" X 30" iron pin with 2" brass cap, marked as shown below, in 4" concrete collar, 30" in the ground, from which:

NEW BEARING OBJECTS:

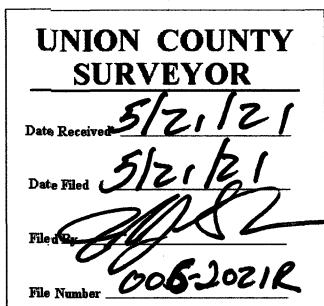
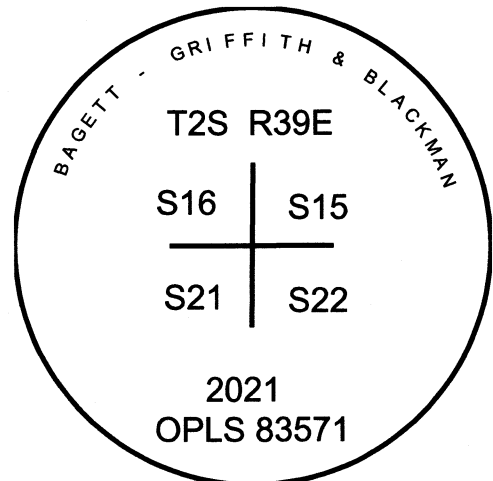
- A 5/8" 30" iron pin bears North 55°46' East, a distance of 40.95 feet, with 1 1/2" aluminum cap marked BGB SURVEY MARKER NE RP
- A 5/8" 30" iron pin bears South 49°32' East, a distance of 29.44 feet, with 1 1/2" aluminum cap marked BGB SURVEY MARKER SE RP
- A 5/8" 30" iron pin bears South 55° West, a distance of 32.06 feet, with 1 1/2" aluminum cap marked BGB SURVEY MARKER SW RP
- A 12" power pole bears North 4° West, a distance of 28.55 feet, marked 0361150101

I hereby certify that the corner was monumented on May 17, 2021.

Witness: Kyle Tucker, Emmitt Ambert



Renewal Date: June 30, 2021



I used a Leica GS18 with RTK in the establishment of the new accessories. Bearings and distances are measured to the center of the aluminum cap. Bearings to the power pole are measured to the center of the pole. Distances are to a spike in the side of the pole. Basis of bearing is as per Survey Number 019-2021.

HORIZONTAL CONTROL DATA
UNION COUNTY, OREGON
OREGON STATE PLANE, NORTH ZONE (3601)

STA NAME: 20220005

SECTION CORNER COMMON TO SECTIONS 15, 16, 21 AND 22

TWP. 2 S RGE. 39 E.

GEODETIC COORD: NAD 83(91)

DATE TIED: February 11, 2022

LAT: 45 ° 23 ' 3.28936 " N

SURVEYOR: JEFFREY S. HSU
OPLS 83571

LONG: 117 ° 55 ' 57.34302 " W

FIRM: BAGETT, GRIFFITH, & BLACKMAN
2006 ADAMS AVENUE
LAGRANDE, OR 97850
(541) 963-6092

SP. COOR: NAD 83(91)

N: 636663.471 INT FT.

E: 8861615.894 INT FT.

TYPE: GPS

THETA: 1 ° 49 ' 14.763088 "

ORDER: SECOND CLASS: 1

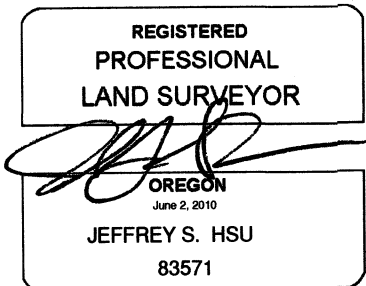
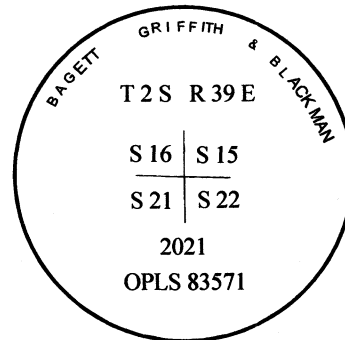
SCALE FACTOR: 0.999901641931

ELEV: 2699.03 US FT.

ELEV: DATUM: NGVD 29

COMMENTS:

5/8" iron pin with 2" Brass cap in concrete collar, marked as shown, set flush with road surface



Renewal Date: June 30, 2023

1 METER = 3.2808333333... US FEET = 39.37 INCHES

1 METER = 3.280839895 INT'L FEET OR 1 INCH = 2.54 CM

TO CALCULATE ELEVATION FACTOR (IN THE NORTH AMERICAN CONTINENT)

DIVIDE 20,906,000 BY (20,906,000 + ELLIPSOID ELEV. IN FEET)

GEOID MODEL : 2012B