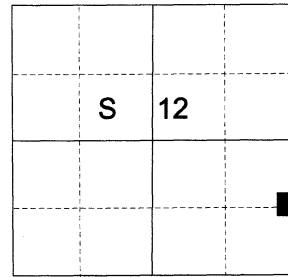


**CERTIFIED RECORD OF LAND CORNER MONUMENTATION**

**HISTORY OF ORIGINAL CORNER ESTABLISHED:**

Corner not previously established.

T 2 S R 38E H-25



**DESCRIPTION OF CORNER EVIDENCE FOUND:**

None

SEE SURVEY NUMBER 018-2021

**DESCRIPTION OF MONUMENT AND ACCESSORIES I ESTABLISHED TO MONUMENT THE ORIGINAL LOCATION OF THIS CORNER:**

At position determined by survey, I set a 5/8" x 30" iron pin with 2 1/2" aluminum cap, marked as shown below, 35" in the ground, from which:

**NEW BEARING OBJECTS:**

A 5/8" x 30" iron pin bears South 39° 59' East, a distance of 33.88 feet, with 1 1/2" aluminum cap marked BGB SURVEY MARKER SE RP

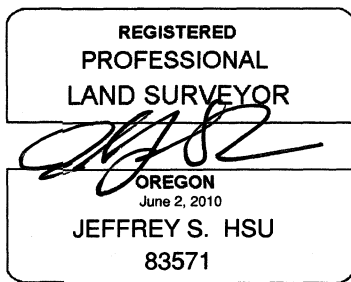
A 5/8" x 30" iron pin bears South 54° 02' West, a distance of 34.57 feet, with 1 1/2" aluminum cap marked BGB SURVEY MARKER SW RP

I set a steel fencepost approximately 30' westerly of the monument.

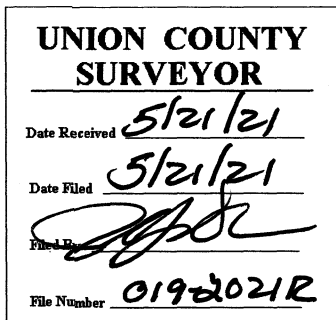
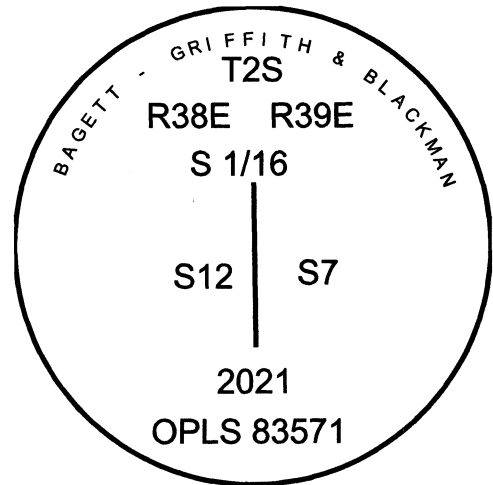
Corner falls in Sandridge Rd.

I hereby certify that the corner was monumented on May 10, 2021.

Witness: Kyle Tucker



Renewal Date: June 30, 2021



I used a Leica GS18 with RTK in the establishment of the new accessories. Bearings and distances are measured to the center of the aluminum cap. Basis of bearing is as per Survey Number 018-2021.