

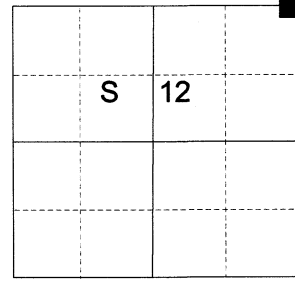
**CERTIFIED RECORD OF LAND CORNER MONUMENTATION**

**HISTORY OF ORIGINAL CORNER ESTABLISHED:**

Corner established under GLO Contract No. 102, dated July 20, 1863, executed by Timothy Davenport. Surveyor General field notes state:

Set post corner to sections 6,7,1,12. Made mound of earth and drove charred stake as per instructions.

T 2 S R 38E E-25



**DESCRIPTION OF CORNER EVIDENCE FOUND:**

None

SEE SURVEY NUMBER 018-2021

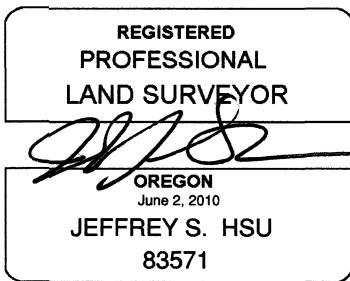
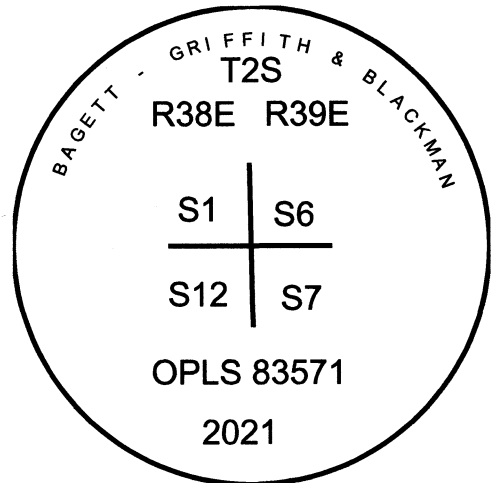
**DESCRIPTION OF MONUMENT AND ACCESSORIES I ESTABLISHED TO MONUMENT THE ORIGINAL LOCATION OF THIS CORNER:**

At proportionate position, I set a 5/8" x 30" iron pin with 2 1/2" aluminum cap, marked as shown below, 35" in the ground, from which:

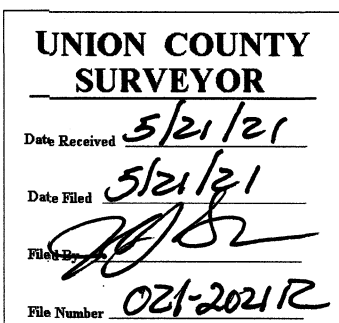
**NEW BEARING OBJECTS:**

- A 5/8" x 30" iron pin bears North 24° 38' East, a distance of 51.20 feet, with 1 1/2" aluminum cap marked BGB SURVEY MARKER NE RP
- A 14" Power pole bears South 32° 35' East, a distance of 47.28 feet, marked 036363101
- A 5/8" x 30" iron pin bears South 47° 39' West, a distance of 32.18 feet, with 1 1/2" aluminum cap marked BGB SURVEY MARKER SW RP
- A 5/8" 30" iron pin bears North 19° 57' West, a distance of 55.92 feet, with 1 1/2" aluminum cap marked BGB SURVEY MARKER NW RP

I hereby certify that the corner was monumented on May 10, 2021.  
Witness: Kyle Tucker



Renewal Date: June 30, 2021



I used a Leica GS18 with RTK in the establishment of the new accessories. Bearings and distances are measured to the center of the aluminum cap. Bearings are to the power pole are to the center of the pole. Distances are to a spike in the side of the pole. Basis of bearing is as per Survey Number 018-2021.

# HORIZONTAL CONTROL DATA

## UNION COUNTY, OREGON

### OREGON STATE PLANE, NORTH ZONE (3601)

STA NAME: 2021005

SECTION CORNER COMMON TO SECTIONS 1, 12, 6 AND 7

TWP. 2 S RGE. 38 & 39 E.

GEODETIC COORD: NAD 83(91)

DATE TIED: June 23, 2021

LAT: 45 ° 24 ' 47.40314 " N

SURVEYOR: RICK G. ROBINSON  
OPLS 83571

LONG: 117 ° 59 ' 37.56273 " W

FIRM: BAGETT, GRIFFITH, & BLACKMAN  
2006 ADAMS AVENUE  
LAGRANDE, OR 97850  
(541) 963-6092

SP. COOR: NAD 83(91)

N: 646709.268 INT FT.

E: 8845580.023 INT FT.

TYPE: GPS

THETA: 1 ° 46 ' 38.5863491 "

ORDER: SECOND CLASS: 1

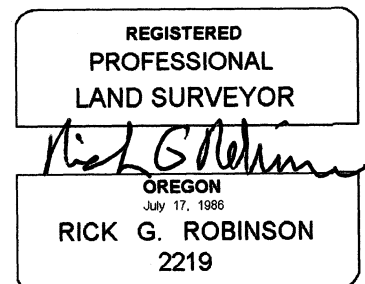
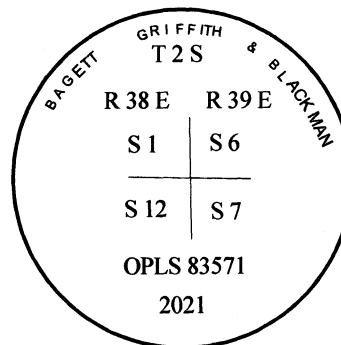
SCALE FACTOR: 0.9999036652

ELEV: 2771.30 US FT.

ELEV: DATUM: NGVD 29

**COMMENTS:**

5/8" iron pin with 2 1/2" aluminum cap  
marked as shown, set 5" below surface



Renewal Date: December 31, 2022

1 METER = 3.280833333... US FEET = 39.37 INCHES

1 METER = 3.280839895 INT'L FEET OR 1 INCH = 2.54 CM

TO CALCULATE ELEVATION FACTOR ( IN THE NORTH AMERICAN CONTINENT)

DIVIDE 20,906,000 BY (20,906,000 + ELLIPSOID ELEV. IN FEET)