

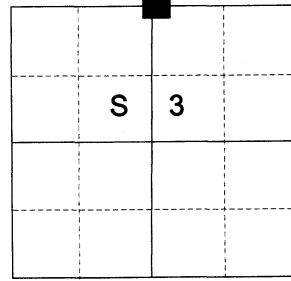
CERTIFIED RECORD OF LAND CORNER MONUMENTATION

HISTORY OF ORIGINAL CORNER ESTABLISHED:

Corner established under GLO Contract No. 102, dated July 20th, 1863, executed by Timothy W. Davenport. Surveyor General Field Notes state:

Set qr. sec post, made mound of earth and drove charred stake as per inst.

T 2 S R 39E A-15



DESCRIPTION OF CORNER EVIDENCE FOUND:

None. An irrigation line runs East/West through the computed position.

SEE SURVEY NUMBER 011-2023

DESCRIPTION OF MONUMENT AND ACCESSORIES I ESTABLISHED TO MONUMENT REFERENCES TO THE ORIGINAL LOCATION OF THIS CORNER:

At position by survey, I set a 5/8" x 30" iron pin REFERENCE MONUMENT, 5 ft. North of true corner position, 40" in the ground, with 2 1/2" aluminum cap marked as shown below, from which:

NEW BEARING OBJECTS:

- A 5/8" x 15" iron pin bears North 38°23' East, a distance of 36.17 feet, with 1 1/2" aluminum cap marked UNION COUNTY SURVEYOR NE RP, (North 33°57' East, a distance of 40.21 feet to the true point)
- A 3" breather bears South 72°08' East, a distance of 17.04 feet, on an irrigation valve block with "X" marked on top, (South 89°12' East, a distance of 16.22 feet to the true point)
- A 4" standpipe bears South 73°45' West, a distance of 20.23 feet, with "X" marked on top, (South 88°03' West, a distance of 19.43 feet to the true point)
- A 5/8" x 15" iron pin bears North 37°38' West, a distance of 34.36 feet, with 1 1/2" aluminum cap marked UNION COUNTY SURVEYOR NW RP, (North 33°05' West, a distance of 38.44 feet to the true point)

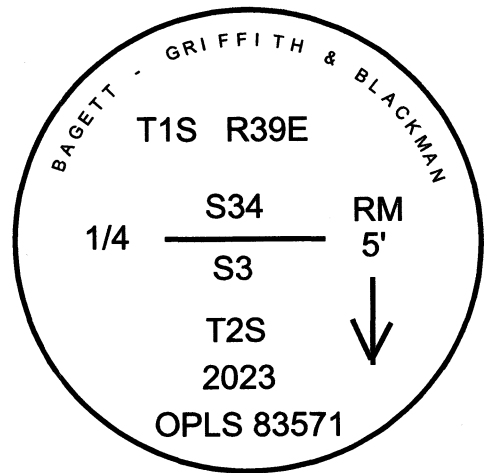
Reference monument falls in East/West farm maintenance road

I hereby certify that the corner was monumented on April 26, 2023.
Witness: Kyle Tucker

REGISTERED
PROFESSIONAL
LAND SURVEYOR

OREGON
June 2, 2010
JEFFREY S. HSU
83571

Renewal Date: June 30, 2025



**UNION COUNTY
SURVEYOR**

Date Received 5/15/23
Date Filed 5/15/23
Filed by [Signature]
File Number 009-2023R

I used a Leica GS18 with RTK in the establishment of the new accessories. Bearings and distances are measured to the center of the aluminum cap. Basis of bearing is as per Survey Number 011-2023.

HORIZONTAL CONTROL DATA

UNION COUNTY, OREGON

OREGON STATE PLANE, NORTH ZONE (3601)

STA NAME: 2023017

REFERENCE MONUMENT TO QUARTER CORNER COMMON TO SECTIONS 34 AND 3

TWP. 1,2 S RGE. 39 E.

GEODETIC COORD: NAD 83(91)

DATE TIED: April 26, 2023

LAT: 45 ° 25 ' 39.71766 " N

SURVEYOR: JEFFREY S. HSU
OPLS 83571

LONG: 117 ° 55 ' 18.25150 " W

FIRM: BAGETT, GRIFFITH, & BLACKMAN
2006 ADAMS AVENUE
LAGRANDE, OR 97850
(541) 963-6092

SP. COOR: NAD 83(91)

N: 652586.784 INT FT.

E: 8863898.857 INT FT.

TYPE: GPS

THETA: 1 ° 49 ' 42.49 "

ORDER: SECOND CLASS: 1

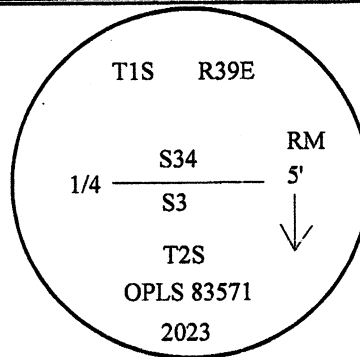
SCALE FACTOR: 0.99990478

ELEV: 2754.20 US FT.

ELEV: DATUM: NGVD 29

COMMENTS:

2 1/2" aluminum cap
marked as shown and 24" below ground



REGISTERED
PROFESSIONAL
LAND SURVEYOR

OREGON
June 2, 2010
JEFFREY S. HSU
83571

Renewal Date: June 30, 2023

1 METER = 3.280833333... US FEET = 39.37 INCHES

1 METER = 3.280839895 INT'L FEET OR 1 INCH = 2.54 CM

TO CALCULATE ELEVATION FACTOR (IN THE NORTH AMERICAN CONTINENT)

DIVIDE 20,906,000 BY (20,906,000 + ELLIPSOID ELEV. IN FEET)

GEOID MODEL : 2012B