

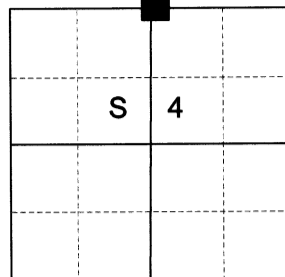
CERTIFIED RECORD OF LAND CORNER MONUMENTATION

HISTORY OF ORIGINAL CORNER ESTABLISHED:

Corner established under GLO Contract No. 102, dated July 20th, 1863, executed by Timothy W. Davenport. Surveyor General Field Notes state:

Set qr sec post, made mound of earth and drove charred stake as per inst.

T 2 S R 39E A-11



DESCRIPTION OF CORNER EVIDENCE FOUND:

None. Falls in middle of field.

SEE SURVEY NUMBER 011-2023

DESCRIPTION OF MONUMENT AND ACCESSORIES I ESTABLISHED TO MONUMENT THE ORIGINAL LOCATION OF THIS CORNER:

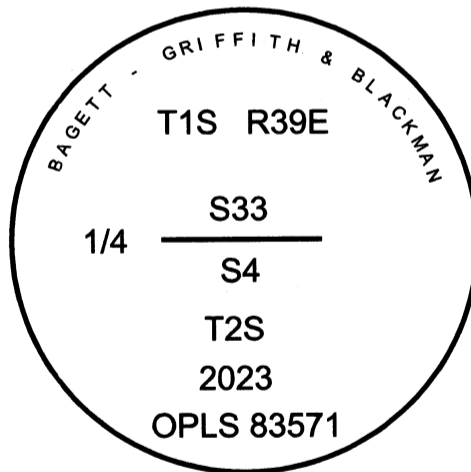
At position by survey, I set a 5/8" x 30" iron pin, 54" in the ground, with 2 1/2" aluminum cap marked as shown below, from which:

NEW BEARING OBJECTS:

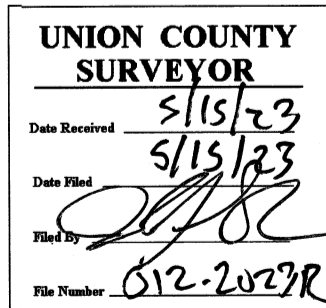
- A 5/8" x 15" iron pin bears North 56°55' East, a distance of 22.08 feet, with 1 1/2" aluminum cap marked UNION COUNTY SURVEYOR NE RP
- A 5/8" x 15" iron pin bears South 21°08' East, a distance of 22.69 feet, with 1 1/2" aluminum cap marked UNION COUNTY SURVEYOR SE RP
- A 5/8" x 15" iron pin bears South 55°08' West, a distance of 24.64 feet, with 1 1/2" aluminum cap marked UNION COUNTY SURVEYOR SW RP
- A 5/8" x 15" iron pin bears North 32°10' West, a distance of 23.36 feet, with 1 1/2" aluminum cap marked UNION COUNTY SURVEYOR NW RP

I hereby certify that the corner was monumented on April 26, 2023.

Witness: Kyle Tucker



Renewal Date: June 30, 2025



I used a Leica GS18 with RTK in the establishment of the new accessories. Bearings and distances are measured to the center of the aluminum cap. Basis of bearing is as per Survey Number 011-2023.

HORIZONTAL CONTROL DATA

UNION COUNTY, OREGON

OREGON STATE PLANE, NORTH ZONE (3601)

STA NAME: 2023015

QUARTER CORNER COMMON TO SECTIONS 33 AND 4

TWP. 1,2 S RGE. 39 E.

GEODETIC COORD: NAD 83(91)

DATE TIED: April 26, 2023

LAT: 45 ° 25 ' 39.75083 " N

SURVEYOR: JEFFREY S. HSU
OPLS 83571

LONG: 117 ° 56 ' 32.45547 " W

FIRM: BAGETT, GRIFFITH, & BLACKMAN
2006 ADAMS AVENUE
LAGRANDE, OR 97850
(541) 963-6092

SP. COOR: NAD 83(91)

N: 652421.971 INT FT.

E: 8858609.700 INT FT.

TYPE: GPS

THETA: 1 ° 48 ' 49.86 "

ORDER: SECOND CLASS: 1

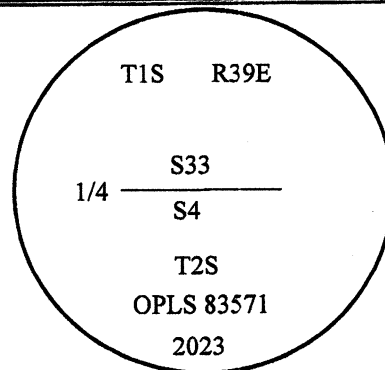
SCALE FACTOR: 0.99990478

ELEV: 2674.71 US FT.

ELEV: DATUM: NGVD 29

COMMENTS:

2 1/2" aluminum cap
marked as shown and 24" below ground



REGISTERED
PROFESSIONAL
LAND SURVEYOR

Jeffrey S. Hsu
OREGON
June 2, 2010
JEFFREY S. HSU
83571

Renewal Date: June 30, 2023

1 METER = 3.2808333333... US FEET = 39.37 INCHES

1 METER = 3.280839895 INT'L FEET OR 1 INCH = 2.54 CM

TO CALCULATE ELEVATION FACTOR (IN THE NORTH AMERICAN CONTINENT)

DIVIDE 20,906,000 BY (20,906,000 + ELLIPSOID ELEV. IN FEET)

GEOID MODEL : 2012B