

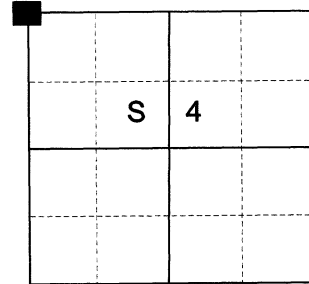
CERTIFIED RECORD OF LAND CORNER MONUMENTATION

HISTORY OF ORIGINAL CORNER ESTABLISHED:

Corner established under GLO Contract No. 102, dated July 20th, 1863, executed by Timothy W. Davenport. Surveyor General Field Notes state:

Set post corner to secs 4, 5, 32, 33 made mound of earth and drove charred stake as per inst.

T 2 S R 39E A-09



DESCRIPTION OF CORNER EVIDENCE FOUND:

None. Falls in edge of field approx. 40 ft. SW of irrigation pivot base.

SEE SURVEY NUMBER 011-2023

DESCRIPTION OF MONUMENT AND ACCESSORIES I ESTABLISHED TO MONUMENT THE ORIGINAL LOCATION OF THIS CORNER:

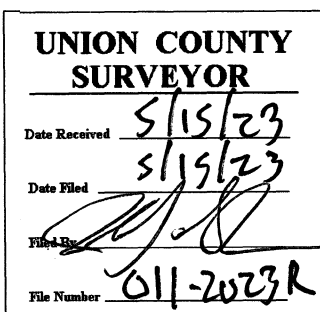
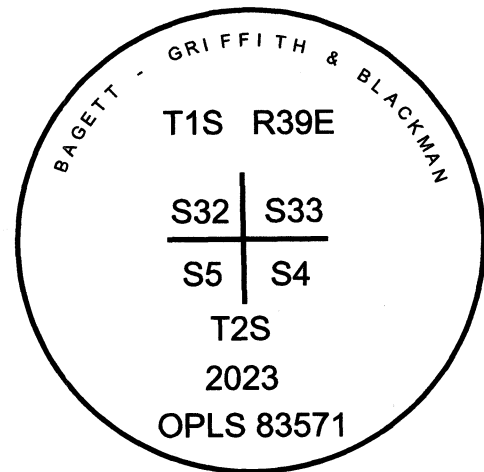
At position by survey, I set a 5/8" x 30" iron pin, 54" in the ground, with 2 1/2" aluminum cap marked as shown below, from which:

NEW BEARING OBJECTS:

- A 2" chiseled "X" bears North 58°16' East, a distance of 36.02 feet, chiseled into the SW corner of a concrete irrigation pivot pad
- A 5/8" x 15" iron pin bears South 57°50' East, a distance of 18.75 feet, with 1 1/2" aluminum cap marked UNION COUNTY SURVEYOR SE RP
- A 5/8" x 15" iron pin bears South 50°13' West, a distance of 22.92 feet, with 1 1/2" aluminum cap marked UNION COUNTY SURVEYOR SW RP
- A 5/8" x 15" iron pin bears North 48° West, a distance of 23.35 feet, with 1 1/2" aluminum cap marked UNION COUNTY SURVEYOR NW RP

I hereby certify that the corner was monumented on April 26, 2023.

Witness: Kyle Tucker



I used a Leica GS18 with RTK in the establishment of the new accessories. Bearings and distances are measured to the center of the aluminum cap. Basis of bearing is as per Survey Number 011-2023.

HORIZONTAL CONTROL DATA

UNION COUNTY, OREGON

OREGON STATE PLANE, NORTH ZONE (3601)

STA NAME: 2023014

SECTION CORNER COMMON TO SECTIONS 32, 33, 4, AND 5

TWP. 1,2 S RGE. 39 E.

GEODETIC COORD: NAD 83(91)

DATE TIED: April 26, 2023

LAT: 45 ° 25 ' 39.78674 " N

SURVEYOR: JEFFREY S. HSU
OPLS 83571

LONG: 117 ° 57 ' 9.55749 " W

FIRM: BAGETT, GRIFFITH, & BLACKMAN
2006 ADAMS AVENUE
LAGRANDE, OR 97850
(541) 963-6092

SP. COOR: NAD 83(91)

N: 652342.028 INT FT.

E: 8855965.040 INT FT.

TYPE: GPS

THETA: 1 ° 48 ' 23.5 "

ORDER: SECOND CLASS: 1

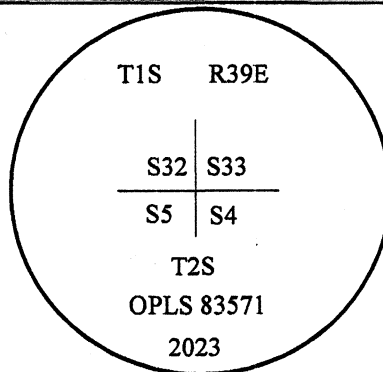
SCALE FACTOR: 0.99990478

ELEV: 2705.10 US FT.

ELEV: DATUM: NGVD 29

COMMENTS:

2 1/2" aluminum cap
marked as shown and 24" below ground



REGISTERED PROFESSIONAL LAND SURVEYOR
OREGON June 2, 2010 JEFFREY S. HSU 83571

Renewal Date: June 30, 2023

1 METER = 3.2808333333... US FEET = 39.37 INCHES

1 METER = 3.280839895 INT'L FEET OR 1 INCH = 2.54 CM

TO CALCULATE ELEVATION FACTOR (IN THE NORTH AMERICAN CONTINENT)

DIVIDE 20,906,000 BY (20,906,000 + ELLIPSOID ELEV. IN FEET)

GEOID MODEL : 2012B