

**CERTIFIED RECORD OF LAND CORNER MONUMENTATION**

**HISTORY OF ORIGINAL CORNER ESTABLISHED:**

Corner originally established by David P. Thompson under GLO contract number 103, dated September 3, 1863. Surveyor General field notes state:

Set post for 1/4 sec. corner in mound of earth with charred stake, pits, trench, as per instructions.

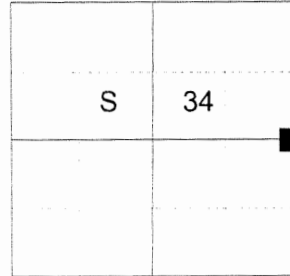
Corner was found by Howard Perry in Union County Survey # 25-80. Record States: Received the following information from James Voelz who stated information is based on statements made to him by previous county surveyors and others.

A section of "T" steel fence post buried along the West side of a graveled lane, South of Oregon State Hwy. 82 marks the correct position of the 1/4 corner common to Sections 34 and 35 T. 2 S., R. 38 E., W.M..  
Found Buried Steel Fence Post

Corner was found by James Hanley in Union County Survey # 77-80. Record States: Found section of steel fence post, 8" underground.

Corner was found by Rick Robinson in Union County Survey # 39-88. Record States: Found East 1/4 corner Section 34. Buried steel fence post.

T 2 S R 38 E X-17



**DESCRIPTION OF CORNER EVIDENCE FOUND:**

Found a buried steel fence post, of which rust fragments exist between 12" and 47" below ground at which depth it was identifiable, with railroad spike lying Westerly, 0.3 West at 27" underground.

**DESCRIPTION OF MONUMENT AND ACCESSORIES I ESTABLISHED TO PERPETUATE THE ORIGINAL LOCATION OF THIS CORNER:**

From the location of the fence post remnant:

I set a 2 1/2" x 30" aluminum pipe with 2 1/2" aluminum cap, 30" in the ground marked as shown below.

From Which:

**NEW BEARING OBJECTS:**

- A 5/8" x 15" iron pin bears North 17° East, a distance of 66.70 ft., with 1 1/2" aluminum cap marked Union County Surveyor NE RP. Falls on South West side of large steel gate post.
- A 5/8" x 15" iron pin bears South 48° East, a distance of 14.80 ft., with 1 1/2" aluminum cap marked Union County Surveyor SE RP. Falls in North/South graveled lane.
- A 5/8" x 15" iron pin bears South 58° West, a distance of 33.75 ft., with 1 1/2" aluminum cap marked Union County Surveyor SW RP. Falls in North/South chain link fence.
- A 5/8" x 15" iron pin bears North 63° West, a distance of 32.50 ft., with 1 1/2" aluminum cap marked Union County Surveyor NW RP. Falls in North/South chain link fence.

Set steel fence post approximately 0.5 feet West with Union County Surveyor Bearing Sign attached. Monument aligns with center post of gate and center line of Halley Rd to the North.

I hereby certify that the corner was monumented on December 14, 2018.

Witness: Kyle A. Tucker

**REGISTERED  
PROFESSIONAL  
LAND SURVEYOR**

OREGON  
June 2, 2010  
**JEFFREY S. HSU**  
83571

Renewal Date: June 30, 2019

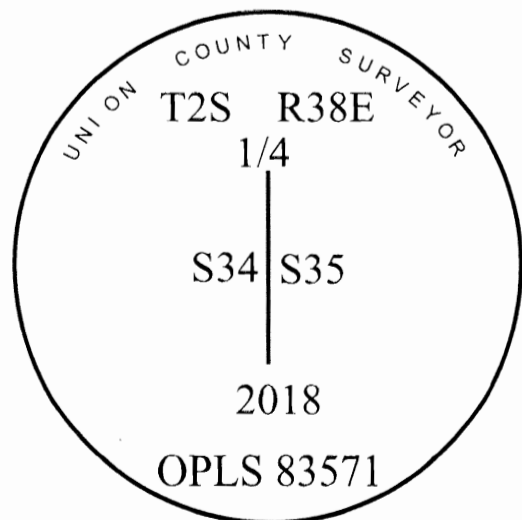
**UNION COUNTY  
SURVEYOR**

Date Received 1/8/19

Date Filed 1/8/19

Filed By [Signature]

File Number 001-209R



I used a steel tape and magnetic compass in the establishment of the new accessories. I used 13° East declination, the distances and bearings are to the center of the aluminum cap.

# HORIZONTAL CONTROL DATA

## UNION COUNTY, OREGON

### OREGON STATE PLANE, NORTH ZONE (3601)

STA NAME: 2019001

1/4 SECTION CORNER COMMON TO SECTIONS 34 AND 35

TWP. 2 S RGE. 38 E.

GEODETIC COORD: NAD 83(91)

DATE TIED: January 14, 2019

LAT: 45 ° 20 ' 51.28048 " N

SURVEYOR: RICK G. ROBINSON  
OPLS 2219

LONG: 118 ° 2 ' 5.64206 " W

FIRM: BAGETT, GRIFFITH, & BLACKMAN  
2006 ADAMS AVENUE  
LAGRANDE, OR 97850  
(541) 963-6092

SP. COOR: NAD 83(91)

N: 622481.885 INT FT.

E: 8835751.849 INT FT.

TYPE: GPS

THETA: 1 ° 44 ' 53.5705574 "

ORDER: SECOND CLASS: 1

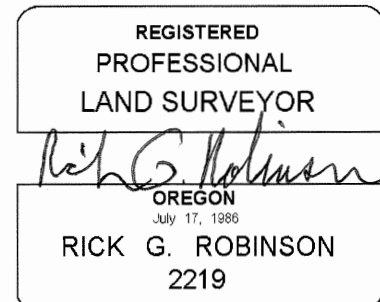
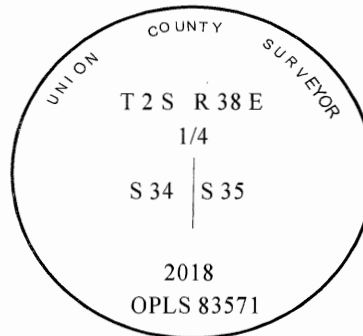
SCALE FACTOR: 0.999899443

ELEV: 2726.15 US FT.

ELEV: DATUM: NGVD 29

COMMENTS:

2 1/2" aluminum monument with steel fence post 0.5 ft. West (monument cap marked as shown).



1 METER = 3.2808333333... US FEET = 39.37 INCHES

1 METER = 3.280839895 INT'L FEET OR 1 INCH = 2.54 CM

TO CALCULATE ELEVATION FACTOR ( IN THE NORTH AMERICAN CONTINENT)

DIVIDE 20,906,000 BY (20,906,000 + ELLIPSOID ELEV. IN FEET)