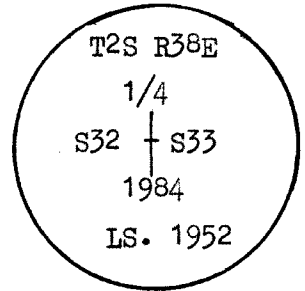


MONUMENT SET (PROCEDURE AND DESCRIPTION)

MONUMENT DETAIL

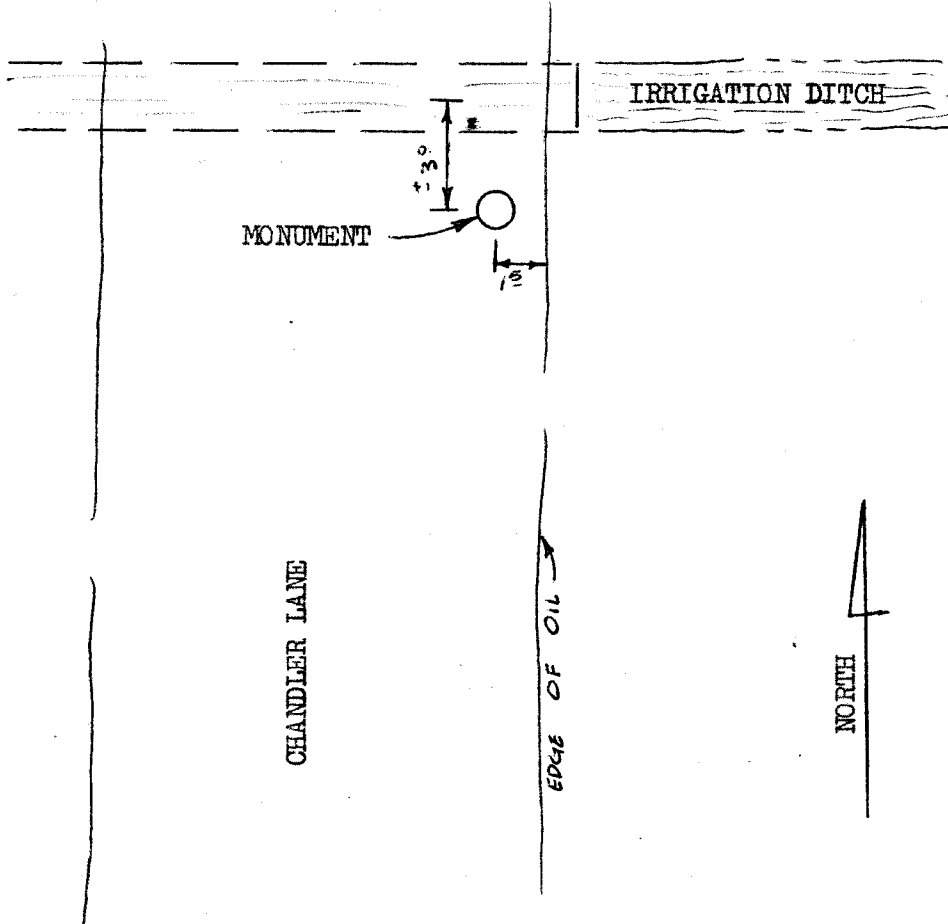
DIDN'T FIND ANY MONUMENT OR ACCESSORIES SO I PROCEEDED TO SET A 2"x30" PIPE WITH A BRASS CAP MARKED AS SHOWN TO THE RIGHT. THE MONUMENT WAS SET IN THE EDGE OF CHANDLER LANE IN A MONUMENT BOX. A SINGLE PROPORTIONING METHOD WAS USED FROM THE FOUND MONUMENTS AT THE N.W. & S.W. CORNERS OF SECTION 33 AND THE N.E. & S.E. CORNERS OF SECTION 32.



NEW ACCESSORIES

NONE

SKETCH OF MONUMENT, ACCESSORIES AND GENERAL AREA (IF NEEDED FOR CLARIFICATION)



LOCATION & COMMENTS

DATE 7-15-84
 COMPASS DECLIN. _____
 FIRM/AGENCY PC, A
 PARTY CHIEF N. PAULLUS
 WITNESSES JOHN ESSER
CHET SAUNDERS

SURVEYOR'S SEAL

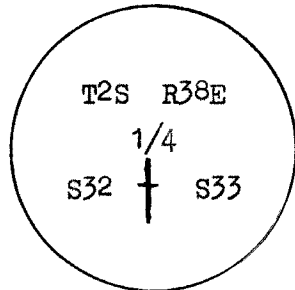
REGISTERED
 PROFESSIONAL
 LAND SURVEYOR

Norman J. Paullus

OREGON
 JULY 17, 1981
 NORMAN J. PAULLUS JR.
 1952

TOWNSHIP 2S, RANGE 38 E.

CORNER DIAGRAM



REFERENCES TO PRIOR RECORDS CS 62-78, CS 56-73,
CS 1-84, CS 57-77

**UNION COUNTY
SURVEYOR**

Date Received 7-16-84
Date Filed 7-17-84
By G. LANGLITZ, DEPUTY
File No. 926-84R

REFER TO FILE NO. X-9
SEE ALSO MAP 32-84

THIS SPACE RESERVED FOR
USE BY COUNTY SURVEYOR

MONUMENT(S) FOUND: (CONDITION AND SOURCE)

MONUMENT DETAIL

NONE

ACCESSORIES FOUND: (CONDITION AND SOURCE)

NONE

HORIZONTAL CONTROL DATA

OREGON STATE PLANE, NORTH ZONE (3601)

LaGRANDE & ISLAND CITY, UNION COUNTY OREGON

STA. NAME: 9607

QUARTER CORNER TO: 32 / 33

TWP.2S, RGE.38E, W.M.

DATE FD.: MARCH, 1996

SURVEYOR: WALTER L. CASWELL
PLS 737

FIRM: EAGLE GPS SURVEY CORP
6110 S.W. LOMBARD AVE.
BEAVERTON, OR. 97008
(503) 643-1073

TYPE: GPS

ORDER: SECOND CLASS: 2

GEODETIC COOR: NAD 83(91)

LAT: 45°20'51.20296" N

LONG: 118°04'33.91910" W

SP. COOR: NAD 83(91)

N: 622153.693 INT.FT.

E: 8825167.925 INT.FT.

THETA: 1°43'08.414"

SCALE FACTOR: 0.999899442

ELEV: 2770.355 US.FT.

ELEV. DATUM: NGVD 29

DIRECTIONS "TO REACH"

REGISTERED
PROFESSIONAL
LAND SURVEYOR

Walter L. Caswell

OREGON
JULY 8, 1966
WALTER L. CASWELL
737

EXPIRES 12/31/97

1 meter = 3.280833... U.S. Feet = 39.37 inches exactly
1 meter = 3.280839895 Intl. Feet or 1 inch = 2.54cm. exactly
To Calculate Elevation Factor (in the North American Continent)
Divide 20,906,000 by (20,906,000 + Ellipsoid Elev. in Feet)

JOB 96-007

SHEET 21 OF 66