

CERTIFIED RECORD OF LAND CORNER MONUMENTATION

History of original corner establishment:

Corner originally established by David P. Thompson under GLO contract Number 103, dated September 3, 1863. Surveyor General record states: Set post in mound of earth.

Survey no. 62-78 calls position of corner.

No subsequent monumentation found in Union County survey records.

Description of corner evidence found:

None

See Survey no. 013-1996

Description of monument and accessories I established to perpetuate the original location of this corner:

At position determined by survey no. 013-1996, I set a 2½"x30" aluminum pipe with 2½" aluminum cap marked as shown, 42 inches in the ground, from which:

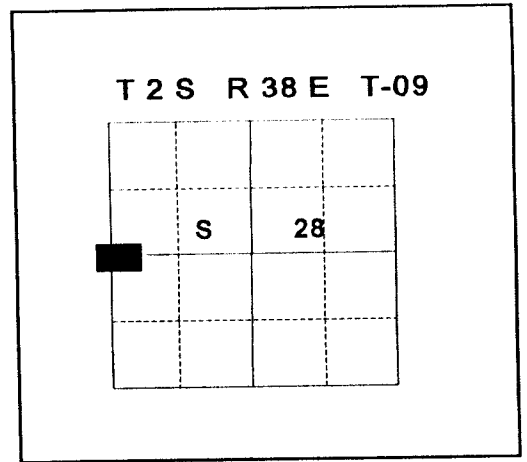
NEW BEARING OBJECTS:

- A 5/8" x 30" iron pin with 1½" aluminum cap, bears N52°E, 9.35 feet marked BGB SURVEY MARKER NE RP. Buried 12 inches.
- A 5/8" x 30" iron pin with 1½" aluminum cap, bears S65°W, 27.44 feet marked BGB SURVEY MARKER SW RP.
- A 5/8" x 30" iron pin with 1½" aluminum cap, bears N66°W, 68.68 feet marked BGB SURVEY MARKER NW RP.
- A 5/8" x 30" iron pin with plastic cap, bears South, 20.00 feet marked BGB SURVEY MARKER. In east-west fence line.

Corner falls in cultivated field and is buried accordingly.

I hereby certify that the corner was monumented on March 28, 1996.

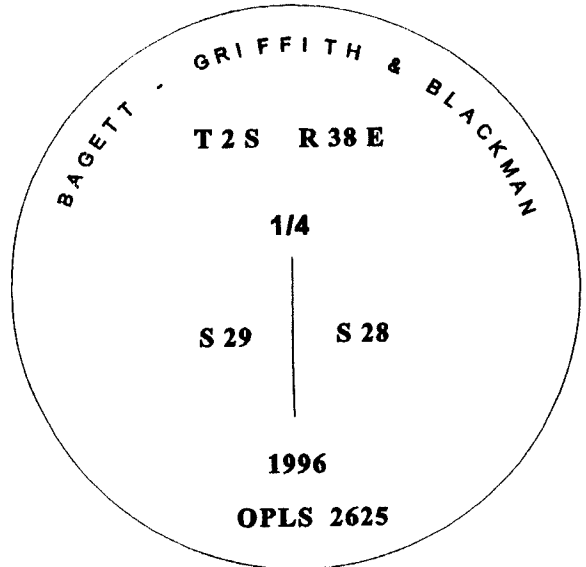
Witness: Mark Durbin, Jeff Madsen



REGISTERED
PROFESSIONAL
LAND SURVEYOR

Jeffery P. Petersen
OREGON
JULY 20, 1993
JEFFERY P. PETERSEN
2625

Renewal Date: December, 31 1996



**UNION COUNTY
SURVEYOR**

Date Received 3-29-96

Date Filed 3-29-96

Filed By R. ROBINSON, DEPUTY

File Number 039-1996R

I used a steel tape and magnetic compass in the establishment of the new accessories. I used 18° East declination.

HORIZONTAL CONTROL DATA
UNION COUNTY, OREGON
OREGON STATE PLANE, NORTH ZONE (3601)

STA NAME: 2018011

1/4 SECTION CORNER COMMON TO SECTIONS 28 AND 29

TWP. 2 S RGE. 38 E.

GEODETIC COORD: NAD 83(91)

DATE TIED: January 30, 2018

LAT: 45 ° 21 ' 43.80657 " N

SURVEYOR: RICK G. ROBINSON
OPLS 2219

LONG: 118 ° 4 ' 33.88343 " W

FIRM: BAGETT, GRIFFITH, & BLACKMAN
2006 ADAMS AVENUE
LAGRANDE, OR 97850
(541) 963-6092

SP. COOR: NAD 83(91)

N: 627478.829 INT FT.

E: 8825010.658 INT FT.

TYPE: GPS

THETA: 1 ° 43 ' 8.4398533 "

ORDER: SECOND CLASS: 1

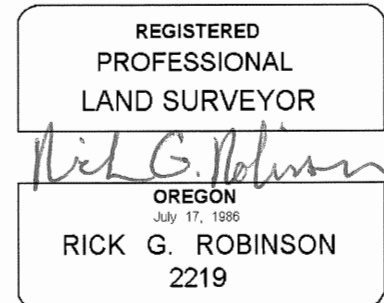
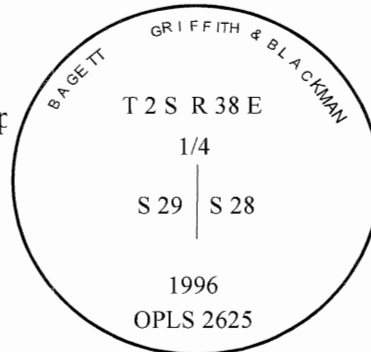
SCALE FACTOR: 0.9999002689

ELEV: 2868.25 US FT.

ELEV: DATUM: NGVD 29

COMMENTS:

2 1/2" aluminum pipe with 2 1/2" aluminum cap
marked as shown, set 1 ft. below the ground.



1 METER = 3.2808333333... US FEET = 39.37 INCHES

1 METER = 3.280839895 INT'L FEET OR 1 INCH = 2.54 CM

TO CALCULATE ELEVATION FACTOR (IN THE NORTH AMERICAN CONTINENT)

DIVIDE 20,906,000 BY (20,906,000 + ELLIPSOID ELEV. IN FEET)