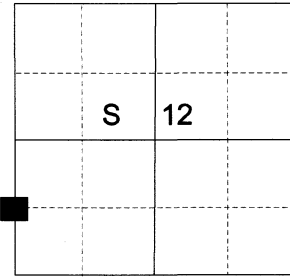


CERTIFIED RECORD OF LAND CORNER MONUMENTATION

HISTORY OF ORIGINAL CORNER ESTABLISHED:

Corner not previously established.

T 2 S R 38E H-21



DESCRIPTION OF CORNER EVIDENCE FOUND:

None

SEE SURVEY NUMBER 018-2021

DESCRIPTION OF MONUMENT AND ACCESSORIES I ESTABLISHED TO MONUMENT THE ORIGINAL LOCATION OF THIS CORNER:

At position determined by survey, I set a 5/8" x 30" iron pin with 2 1/2" Aluminum cap, marked as shown below, 35" in the ground, from which:

NEW BEARING OBJECTS:

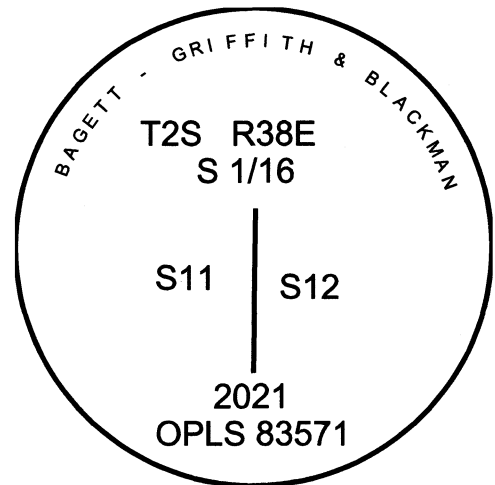
A 5/8" x 30" iron pin bears South 89° 52' East, a distance of 30.00 feet, with 1 1/2" aluminum cap marked BGB SURVEY MARKER

A 5/8" x 30" iron pin bears North 59° 24' West, a distance of 31.46 feet, with 1 1/2" aluminum cap marked BGB SURVEY MARKER NW RP

A steel fencepost approximately 30 feet Easterly. Corner falls in Webster Road.

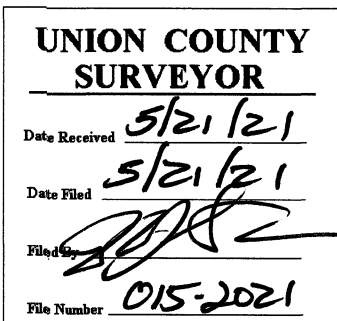
I hereby certify that the corner was monumented on May 10, 2021.

Witness: Kyle Tucker, Emmitt Ambert



Renewal Date: June 30, 2021

I used a Leica GS18 with RTK in the establishment of the new accessories. Bearings and distances are measured to the center of the aluminum cap. Basis of bearing is as per Survey Number 018-2021.



H-21