

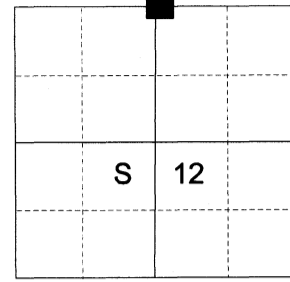
CERTIFIED RECORD OF LAND CORNER MONUMENTATION

HISTORY OF ORIGINAL CORNER ESTABLISHED:

Corner established under GLO Contract No. 102, dated July 20, 1863, executed by Timothy Davenport. Surveyor General field notes state:

Set post for 1/4 section corner in mound of Earth with pits trench and charred stake as per instructions.

T 2 S R 38E E-23



DESCRIPTION OF CORNER EVIDENCE FOUND:

None. Remnants of an East/West running fenceline fall to the East and West.

SEE SURVEY NUMBER 018-2021

DESCRIPTION OF MONUMENT AND ACCESSORIES I ESTABLISHED TO MONUMENT THE ORIGINAL LOCATION OF THIS CORNER:

At position determined by survey, I set a 5/8" x 30" iron pin with 2 1/2" Aluminum cap, marked as shown below, 30" in the ground, from which:

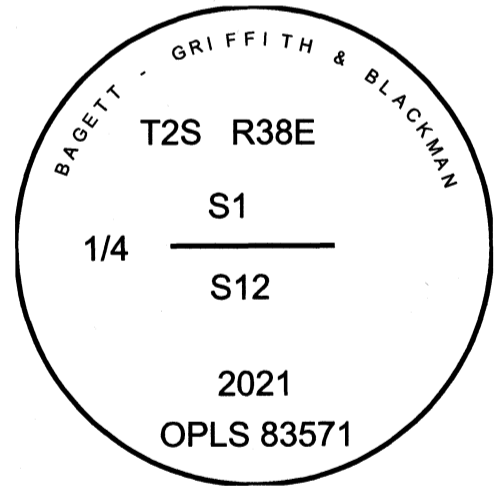
NEW BEARING OBJECTS:

- A 5/8" x 30" iron pin bears North 60° 06' East, a distance of 9.40 feet, with 1 1/2" aluminum cap marked NE RP
- A 5/8" x 30" iron pin bears South 43° 08' East, a distance of 13.04 feet, with 1 1/2" aluminum cap marked SE RP
- A 5/8" x 30" iron pin bears South 50° 01' West a distance of 12.35 feet, with 1 1/2" aluminum cap marked SW RP
- A 5/8" x 30" iron pin bears North 61° 15' West, a distance of 10.68 feet, with 1 1/2" aluminum cap marked BGB SURVEY MARKER NW RP

Set fence post approximately 0.5 feet Southerly from monument.

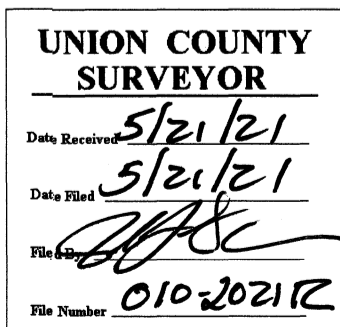
I hereby certify that the corner was monumented on May 10, 2021.

Witness: Kyle Tucker,



Renewal Date: June 30, 2021

I used a Leica GS18 with RTK in the establishment of the new accessories. Bearings and distances are measured to the center of the aluminum cap. Basis of bearing is as per Survey Number 018-2021.



HORIZONTAL CONTROL DATA

UNION COUNTY, OREGON

OREGON STATE PLANE, NORTH ZONE (3601)

STA NAME: 2021004

1/4 SECTION CORNER COMMON TO SECTIONS 1 AND 12

TWP. 2 S RGE. 38 E.

GEODETIC COORD: NAD 83(91)

DATE TIED: June 23, 2021

LAT: 45 ° 24 ' 47.56955 " N

SURVEYOR: RICK G. ROBINSON
OPLS 2219

LONG: 118 ° 0 ' 14.56112 " W

FIRM: BAGETT, GRIFFITH, & BLACKMAN
2006 ADAMS AVENUE
LAGRANDE, OR 97850
(541) 963-6092

SP. COOR: NAD 83(91)

N: 646644.425 INT FT.

E: 8842941.618 INT FT.

TYPE: GPS

THETA: 1 ° 46 ' 12.3476107 "

ORDER: SECOND CLASS: 1

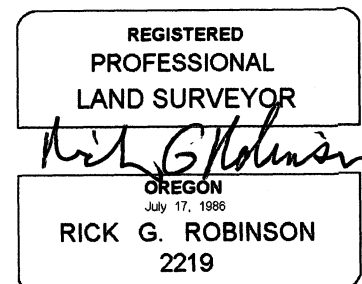
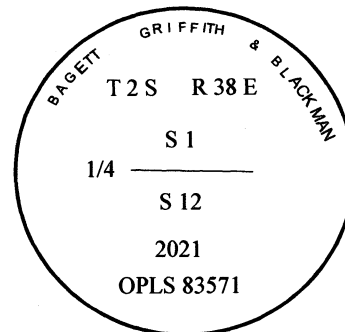
SCALE FACTOR: 0.9999036686

ELEV: 2776.83 US FT.

ELEV: DATUM: NGVD 29

COMMENTS:

5/8" iron pin with 2 1/2" aluminum cap
marked as shown.



Renewal Date: December 31, 2022

1 METER = 3.280833333... US FEET = 39.37 INCHES

1 METER = 3.280839895 INT'L FEET OR 1 INCH = 2.54 CM

TO CALCULATE ELEVATION FACTOR (IN THE NORTH AMERICAN CONTINENT)

DIVIDE 20,906,000 BY (20,906,000 + ELLIPSOID ELEV. IN FEET)