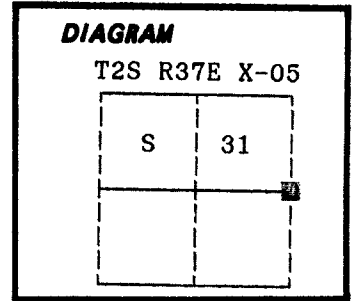


CERTIFIED RECORD OF LAND CORNER MONUMENTATION

History of original corner establishment:

Corner originally established by John A. Hurlburt under GLO contract number 201, dated August 5, 1873. Surveyor General record states:
 Set pine post 4 ft. long 3 in. thick 2 ft. in ground for 1/4 sec. cor.
 Pine 36 in. dia. N78°W 127 lks
 Pine 30 in. dia. N25°E 110 lks



No record of subsequent monumentation found in Union County survey records.

Description of corner evidence found:

Found no evidence of the original corner monument or it's accessories.

See map of survey dated January, 1989.

UNION COUNTY SURVEYOR	
Date Received	<u>2-13-89</u>
Date Filed	<u>2-13-89</u>
By	<u>G. LANGLITZ, DEPUTY</u>
File No.	<u>42-89 R</u>

Description of monument and accessories I established to perpetuate the

original location of this corner: At position determined by survey, I set a 2 1/2" x 30" aluminum pipe with aluminum cap marked as shown, 26 inches in the ground, from which:

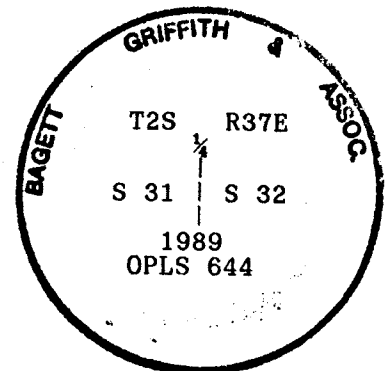
New BT and BO:

- A 28 inch diameter Cottonwood bears S6°E, 97.87 feet marked 1/4 S32 BT (bark scribed)
- A 5/8"x30" iron pin with plastic cap marked BGA SURVEY MARKER bears N1°W, 4.46 feet (Pin is set by steel fencepost)
- Painted a 6 inch red band around all BTs and attached bearing tree and land survey monument signs.

Set a steel fencepost approximately 5 feet North with land survey monument sign attached.

I hereby certify that the above corner point was perpetuated as hereon described on January 20, 1989.

Witnesses: Greg Blackman and Rick Robinson



**REGISTERED
PROFESSIONAL
LAND SURVEYOR**

Duane I. Griffith
 OREGON
 JULY 10, 1964
DUANE I. GRIFFITH
 644

I used a steel tape and magnetic compass in the establishment of new accessories. I used 17° East magnetic declination and the distances are to a 50d spike driven in the right side of the root crown. I attached a brass washer marked OPLS 644 to the BT blaze.

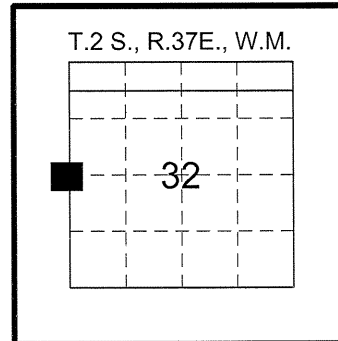
Office of..... County of.....
 State of....., I hereby certify that the within instrument was filed in this office
 for record on the..... day of....., 19.....
 by
 (COUNTY OFFICIAL) (DEPUTY)

CERTIFIED RECORD OF LAND CORNER MONUMENTATION

X-5

HISTORY OF ORIGINAL CORNER ESTABLISHMENT:

The partial subdivision of T.2S. R.37E., W.M. was surveyed by John A. Hurlburt under contract No. 201, approved Nov. 13, 1874, for the southern tier of sections including Secs. 31 and 32, his field notes state: Set pine post 4 ft. long, 3 in. thick, 2 ft. in ground for 1/4 sec. cor.
 Pine 36 in. in dia. N 78° W, 127 lks.
 Pine 30 in. in dia. N 25° E, 110 lks.



SUBSEQUENT CORNER MONUMENTATION OF RECORD:

This corner was reestablished by Duane Griffith in 1989. His notes in Mon. Record No.42-89 R state: Found no evidence of the original corner monument or its accessories. See map of survey dated January 1989.

At position determined by survey, I set a 2 1/2" x 30" aluminum pipe with aluminum cap marked as shown, 26 inches in the ground, from which:

New BT and BO:
 A 28 inch diameter Cottonwood bears S6° E, 97.87 feet marked 1/4 S32 BT (bark scribed).
 A 5/8" x 30" iron pin with plastic cap marked BGA SURVEY MARKER bears N1° W, 4.46 feet, (Pin is set by steelfencepost).

Painted a 6 inch red band around all BTs and attached bearing tree and land survey monument signs. Set a steelfencepost approximately 5 feet North with land survey monument sign attached. I used a steeltape and magnetic compass in the establishment of new accessories. I used 17° East magnetic declination and the distances are to a 50d spike driven in the right side of the root crown. I attached a brass washer marked OPLS 644 to the BT blaze.

DESCRIPTION OF CORNER EVIDENCE FOUND:

Found a 2 1/2 in. diam. alum. post monument, up 4 ins., intact but bent, with cap removed by force, possibly from mowing. Corner is in a swampy area W. of R.R. and N. of freeway. Also found record accessories: A cottonwood tree, 35 ins. d.b.h., with visible scribing and nail holding metal washer marked "OPLS" on side facing corner, with F.S. signs 54-3 and 54-9 attached. No trace of 50d spike at side of tree was found. A 5/8 in. diam. iron rod with 1 1/2 in. diam. yellow plastic cap marked: BGA SURVEY MARKER, up 3 ins., rod is slightly bent away from corner, a steelt-post with F.S. sign attached bears N. 0.4 ft. from iron rod.

DESCRIPTION OF MONUMENT AND ACCESSORIES I ESTABLISHED TO PERPETUATE THE ORIGINAL LOCATION OF THIS CORNER:

Old monument was excavated and original hole located at base. Center of cottonwood BT was located by survey. Distance fits record but bearing slightly different, bearing taken to nail with metal washer at face of BT. Original iron rod fits well for bearing but bent away from corner, new measurement on this accessory taken at its existing position.

Set a 3 1/4 in. diam. alum. cap on a 2 1/2 in. diam. by 30 in. long alum. post, buried 28 inches in the ground, clear DEEP-1 magnet buried at base, placed rock collar around monument, set a galvanized steelpost 1.0 ft. NE'ly, marked as shown:

From which: I establish the following references:

A 5/8 in. diam. by 30 in. long iron rod (rebar) with a 1 1/2 in. diam. alum. cap, driven 30 ins. in the ground, marked: ODOT NE RP, bears N44° 36'29"E, 54.69 ft.

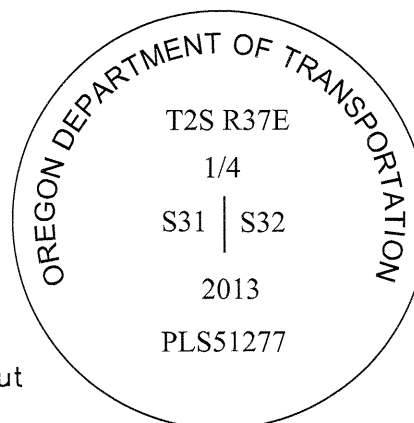
A 35 in. d.b.h. cottonwood tree, with visible scribing and metal washer marked OPLS on face, with F.S. 54-3 sign on front and 54-9 sign on back toward highway, bears S6° 39'17"E, 97.87 ft.

A 5/8 in. diam. by 30 in. long iron rod (rebar) with a 1 1/2 in. diam. alum. cap, driven 30 ins. in the ground, marked: ODOT SW RP, bears S47° 20'56"W, 76.64 ft.

A 5/8 in. diam. iron rod (rebar), up 3 ins. and slightly bent, with a 1 1/2 in. diam. yellow plastic cap, marked: BGA SURVEY MARKER, bears N0° 42'31"W, 4.64 ft.

Accessories taken with Leica TS15 total station, bearings shown hereon are converted from grid to true meridian.
 Witnesses: Ross Hodgson, Peter Elder

I hereby certify that the above corner position was perpetuated as hereon described on Sept. 30, 2013.



REGISTERED
PROFESSIONAL
LAND SURVEYOR

Peter C. Elder

OREGON
JULY 13, 1999
PETER C. ELDER
51277

RENEWS: 12/31/2013

UNION COUNTY SURVEYOR	
Date Received	<u>10/2/13</u>
Date Filed	<u>10/12/13</u>
By	<i>W. G. Miller</i>
File No.	<u>445-2013R</u>



Section	<i>Hilgard - Oro Dell</i>		
Highway	<i>Interstate 84, Old Oregon Trail</i>		
County	<i>Union</i>	Scale	<i>NTS</i>
Purpose	<i>ROW</i>	Date	<i>Oct. 1, 2013</i>
File			

HORIZONTAL CONTROL DATA

UNION COUNTY, OREGON

OREGON STATE PLANE, NORTH ZONE (3601)

STA NAME: 2019004

1/4 SECTION CORNER COMMON TO SECTIONS 31 AND 32

TWP. 2 S RGE. 37 E.

GEODETIC COORD: NAD 83(91)

DATE TIED: January 24, 2019

LAT: 45 ° 20 ' 53.37625 " N

SURVEYOR: RICK G. ROBINSON
OPLS 2219

LONG: 118 ° 13 ' 15.14711 " W

FIRM: BAGETT, GRIFFITH, & BLACKMAN
2006 ADAMS AVENUE
LAGRANDE, OR 97850
(541) 963-6092

SP. COOR: NAD 83(91)

N: 621290.443 INT FT.

E: 8787954.670 INT FT.

TYPE: GPS

THETA: 1 ° 36 ' 58.7669421 "

ORDER: SECOND CLASS: 1

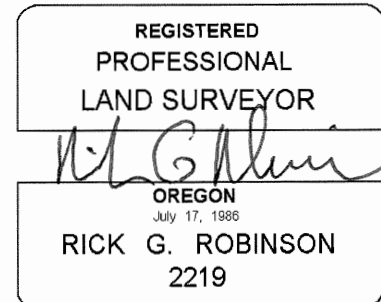
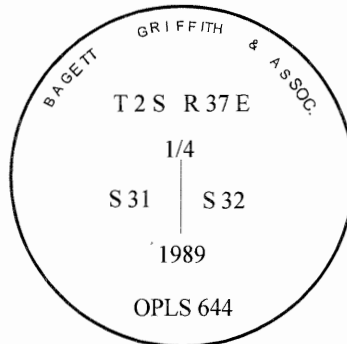
SCALE FACTOR: 0.9998994747

ELEV: 2976.63 US FT.

ELEV: DATUM: NGVD 29

COMMENTS:

2 1/2" aluminum monument with cap
marked as shown



Renewal Date: December 31, 2020

1 METER = 3.2808333333... US FEET = 39.37 INCHES

1 METER = 3.280839895 INT'L FEET OR 1 INCH = 2.54 CM

TO CALCULATE ELEVATION FACTOR (IN THE NORTH AMERICAN CONTINENT)

DIVIDE 20,906,000 BY (20,906,000 + ELLIPSOID ELEV. IN FEET)