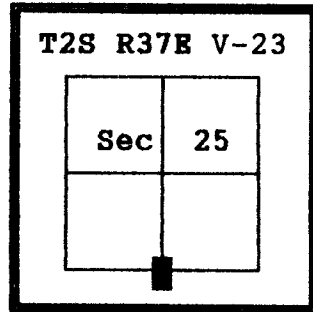


CERTIFIED RECORD OF LAND CORNER MONUMENTATION

HISTORY OF ORIGINAL CORNER ESTABLISHMENT:

Corner originally established by John A. Hurlbert under GLO contract Number 201, dated August 5, 1873. Surveyor General record states:

Set basalt stone 15 X 12 X 10 ins. in mound of stone for 1/4 corner.



DIAGRAM

No record of subsequent monumentation found in Union County survey records

DESCRIPTION OF CORNER EVIDENCE FOUND:

Found stone 13x11x10 inches marked 1/4 along side an old rock jack. I accept this position for the 1/4 corner.

See Union County Survey Number 027-1993.

DESCRIPTION OF MONUMENT AND ACCESSORIES I ESTABLISHED TO PERPETUATE THE ORIGINAL LOCATION OF THIS CORNER:

In place of the found original corner stone, I set a 2 1/2" x 30" aluminum pipe with aluminum cap marked as shown, 10 inches in the ground, from which;

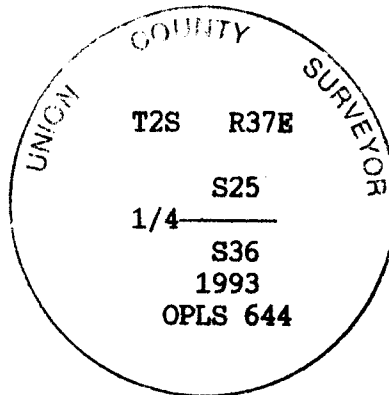
REFERENCE OBJECTS

- A 5/8" X 30" rebar bears N 41°E, 6.87 feet, with aluminum cap marked NE RP.
- A 5/8" X 30" rebar bears S 39°E, 7.20 feet, with aluminum cap marked SE RP.
- A 5/8" X 30" rebar bears S 31°W, 6.00 feet, with aluminum cap marked SW RP.
- A 5/8" X 30" rebar bears N 17°W, 6.71 feet, with aluminum cap marked NW RP.

Raised a mound of stone around monument, 6 ft. base to top of cap.

Set a steel fence post approximately 5 feet West with Land Survey Monument sign attached.
Buried the original corner stone East and alongside of Monument.

I hereby certify that the above corner point was perpetuated as hereon described on July 31, 1993.



REGISTERED PROFESSIONAL LAND SURVEYOR

Handwritten signature of Duane I. Griffith

OREGON
JULY 10, 1984
DUANE I. GRIFFITH
644

UNION COUNTY SURVEYOR

Date Received 8/9/93

Date Filed 8/9/93

By *Wagon T. Blakemore*

File No. 032-1993K

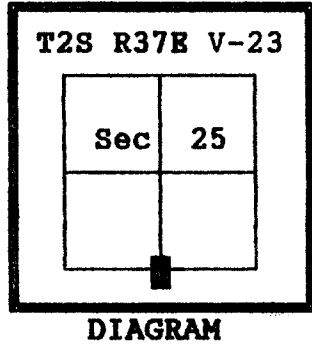
I used a steel tape and magnetic compass in the establishment of new accessories. I used 20° East magnetic declination and the distances are to the center of the aluminum cap.

CERTIFIED RECORD OF LAND CORNER MONUMENTATION

HISTORY OF ORIGINAL CORNER ESTABLISHMENT:

Corner originally established by John A. Hurlbert under GLO contract Number 201, dated August 5, 1873. Surveyor General record states:

Set basalt stone 15 X 12 X 10 ins. in mound of stone for 1/4 corner.



No record of subsequent monumentation found in Union County survey records
DESCRIPTION OF CORNER EVIDENCE FOUND:

Found stone 13x11x10 inches marked $\frac{1}{4}$ along side an old rock jack.
I accept this position for the 1/4 corner.

See Union County Survey Number 027-1993.

DESCRIPTION OF MONUMENT AND ACCESSORIES I ESTABLISHED TO PERPETUATE THE ORIGINAL LOCATION OF THIS CORNER:

In place of the found original corner stone, I set a 2 $\frac{1}{2}$ " x 30" aluminum pipe with aluminum cap marked as shown, 10 inches in the ground, from which;

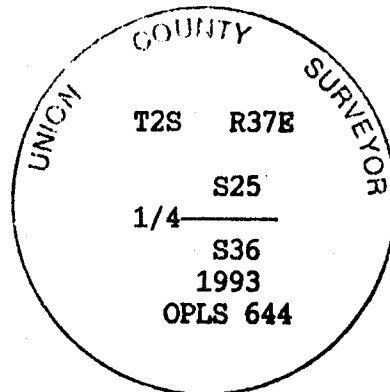
REFERENCE OBJECTS

- A 5/8" X 30" rebar bears N 41°E, 6.87 feet, with aluminum cap marked NE RP.
- A 5/8" X 30" rebar bears S 39°E, 7.20 feet, with aluminum cap marked SE RP.
- A 5/8" X 30" rebar bears S 31°W, 6.00 feet, with aluminum cap marked SW RP.
- A 5/8" X 30" rebar bears N 17°W, 6.71 feet, with aluminum cap marked NW RP.

Raised a mound of stone around monument, 6 ft. base to top of cap.

Set a steel fence post approximately 5 feet West with Land Survey Monument sign attached.
Buried the original corner stone East and alongside of Monument.

I hereby certify that the above corner point was perpetuated as hereon described on July 31, 1993.



REGISTERED
PROFESSIONAL
LAND SURVEYOR

Duane I. Griffith

OREGON
JULY 10, 1964
DUANE I. GRIFFITH
644

UNION COUNTY
SURVEYOR

Date Received 8/9/93

Date Filed 8/9/93

By *Gregory T. Barker*

File No. 032-1993K

I used a steel tape and magnetic compass in the establishment of new accessories. I used 20° East magnetic declination and the distances are to the center of the aluminum cap.

HORIZONTAL CONTROL DATA

UNION COUNTY, OREGON

OREGON STATE PLANE, NORTH ZONE (3601)

STA NAME: 2019019

1/4 SECTION CORNER COMMON TO SECTIONS 25 AND 36

TWP. 2 S RGE. 37 E.

GEODETIC COORD: NAD 83(91)

DATE TIED: August 14, 2019

LAT: 45 ° 21 ' 17.80393 " N

SURVEYOR: RICK G. ROBINSON
OPLS 2219

LONG: 118 ° 7 ' 36.69778 " W

FIRM: BAGETT, GRIFFITH, & BLACKMAN
2006 ADAMS AVENUE
LAGRANDE, OR 97850
(541) 963-6092

SP. COOR: NAD 83(91)

N: 624459.097 INT FT.

E: 8812041.653 INT FT.

TYPE: GPS

THETA: 1 ° 40 ' 58.7904714 "

ORDER: SECOND CLASS: 1

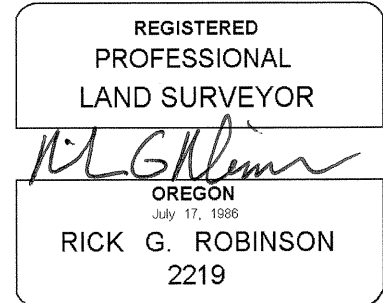
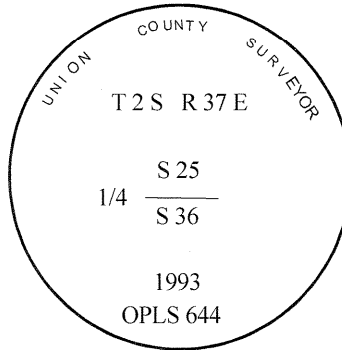
SCALE FACTOR: 0.999899852

ELEV: 3678.00 US FT.

ELEV: DATUM: NGVD 29

COMMENTS:

2 1/2" aluminum monument with steel fence post 5 ft. West (monument cap marked as shown).



Renewal Date: December 31, 2020

1 METER = 3.2808333333... US FEET = 39.37 INCHES

1 METER = 3.280839895 INT'L FEET OR 1 INCH = 2.54 CM

TO CALCULATE ELEVATION FACTOR (IN THE NORTH AMERICAN CONTINENT)

DIVIDE 20,906,000 BY (20,906,000 + ELLIPSOID ELEV. IN FEET)