

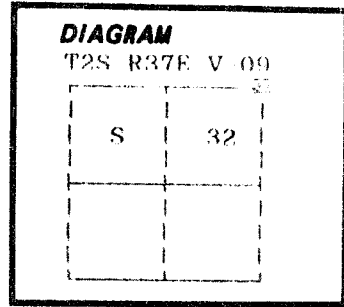
**CERTIFIED RECORD OF LAND CORNER MONUMENTATION**

**History of original corner establishment:**

Corner originally established by John A. Hurlburt under GLO Contract Number 201, dated August 5, 1873. Surveyor General record states:

Set basalt stone 18x12x10, 10 in. in ground for corner to Sections 28, 29, 32 and 33.

- Pine 10 in. diam. bears N30°W, 44 lks.
- Pine 24 in. diam. bears N50°E, 40 lks.
- Pine 24 in. diam. bears S53°E, 26 lks.
- Pine 24 in. diam. bears S22°W, 53 lks.



No record of subsequent monumentation found in Union County survey records.

**Description of corner evidence found:**

- Found an old fence corner, fences N-E-& W.
- Found a rotted pine stump N47°E, 26.4 ft. no marks.
- Found a rotted pine stump S50°E, 17.2 ft. no marks.
- Found a rotted pine stump N28°W, 29.0 ft. no marks.

I accept these stumps as the remains of the original bearing trees.

**Description of monument and accessories I established to perpetuate the original location of this corner:**

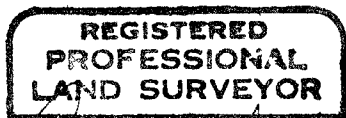
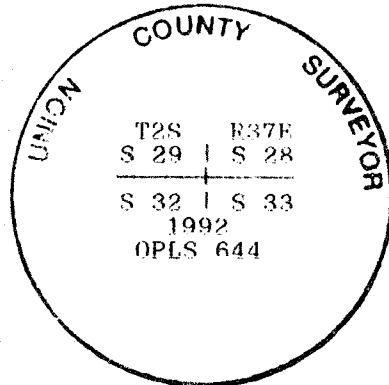
At record distance from the found bearing trees, I set a 2 1/2"x30" aluminum pipe with aluminum cap marked as shown, 26 inches in the ground, from which;

- New Bearing Trees;**
- A 23 inch diameter Ponderosa pine bears N46°E, 46.86 feet marked T2S R37E S28 BT
  - A 16 inch diameter Ponderosa pine bears S30°E, 76.44 feet marked T2S R37E S33 BT
  - A 15 inch diameter Ponderosa pine bears S2°W, 55.91 feet marked T2S R37E S32 BT
  - A 14 inch diameter Ponderosa Pine bears S35°W, 43.57 feet marked X BT
  - A 5/8" X 30" rebar bears N70°W, 8.21 feet with aluminum cap marked NW RP

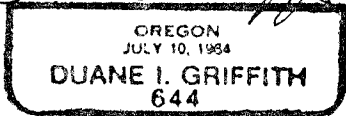
Set a steel fence post approximately 5 feet North with Attention sign attached.

I hereby certify that the above corner point was perpetuated as hereon described on May 26, 1992.

Witness: Peter Crabtree



*Duane I. Griffith*



I used a steel tape and magnetic compass in the establishment of new accessories. I used 20° East magnetic declination and the distances are to a 50d spike driven in the right side of the root crown. I attached a brass washer marked OPLS 644 to the BT blaze.

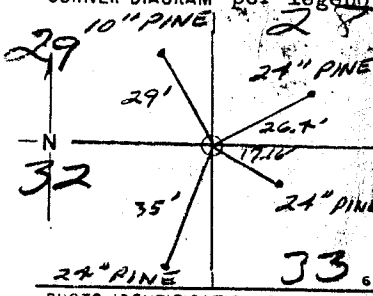
Office of..... County of.....  
 State of....., I hereby certify that the within instrument was filed in this office  
 for record on the..... day of..... 1992

.....  
 (COUNTY OFFICIAL) ..... (DEPUTY)

Form R6-7100-57 (9/71)

Witnessed by County Clerk  
 Date 9/15/92  
 Date 9/15/92  
 By *Regina T. Black*  
 File No. 055-1992R

Index File No. V-9 CORNER RECORD (SEARCH) Contract or Survey No. \_\_\_\_\_ Cor. No. \_\_\_\_\_  
 T 23 R. 37E R.D. LA GRANDE County UNION NE Cor. of  
 Merid. will N.F. W-W State OR Section 32



DESCRIBE CORNER MONUMENT FOUND

STONE OR RIGHT SIZE BUT CANNOT DISTINGUISH NOTCHES.

DESCRIBE BEARING TREES OR OTHER OFFICIAL ACCESSORIES FOUND

SECTIONS 28, 29, 33 - ROTTED STUMP REMAINS WHICH FIT NOTES NO SCRIBING - SOME ARE MARKS OF CHIPS

PHOTO IDENTIFICATION DATA

Photo No. \_\_\_\_\_  
 Filed At. \_\_\_\_\_  
 Object Ident. \_\_\_\_\_  
 Ident. By \_\_\_\_\_  
 Signature \_\_\_\_\_

DESCRIBE CORNER LOCATION RELATIVE TO NEAR-BY FEATURES, ALSO HOW TO REACH CORNER

CORNER LEGEND:  
 FS or Unverified  
 Contr. Other  
 ○ ◇ Searched For/Not Found  
 ⊗ ⊗ Evidence Found/Accept.  
 ● ◆ Permanent Mon. Set/Fd.

Searched By: Jerry Ash Title CET. Division LA GRANDE Headquarters \_\_\_\_\_ Date JUNE '86

CORNER RECORD (PERPETUATION)

MONUMENT: DESCRIBE NEW MONUMENT SET, OR WORK DONE TO PRESERVE EXISTING MONUMENT

MONUMENT STAMPED

ACCESSORIES: DESCRIBE NEW BT'S WITNESS OBJECTS ETC. ESTABLISHED, OR WORK DONE TO PRESERVE EXISTING EVIDENCE

Work Done By \_\_\_\_\_ Title \_\_\_\_\_ Date \_\_\_\_\_ State Registration No. or Agency \_\_\_\_\_  
 Plat. or Certified Cor. Record Prepared? Yes No Filed At \_\_\_\_\_ Co. Surveyor's Office Date \_\_\_\_\_

History of Surveys, G.L.O., etc.  
BASALT STONE 18" x 2" x 10" - 10" in CRADLE BED OR  
PINE 10" N 30° W 74 lks (29.04') 209' GULCH  
PINE 24" N 50° E 40 lks (26.40') 165' TO SOUTH  
PINE 24" S 53° E 26 lks (17.16')  
PINE 24" S 22° W 53 lks (39.98')

Index File No. T. , R. , Contract or Surv. No. Cor. \_\_\_\_\_

UNION COUNTY SURVEYOR

V-9