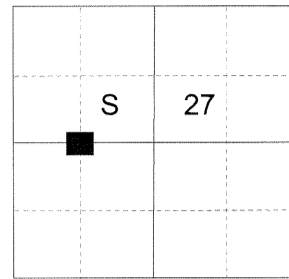


CERTIFIED RECORD OF LAND CORNER MONUMENTATION

HISTORY OF ORIGINAL CORNER ESTABLISHED:

None.

T 2 S R 37 E T-14



DESCRIPTION OF CORNER EVIDENCE FOUND:

None.

SEE SURVEY NUMBER 006-2019

DESCRIPTION OF MONUMENT AND ACCESSORIES I ESTABLISHED TO MONUMENT THE ORIGINAL LOCATION OF THIS CORNER:

At the position by survey I set a 5/8"x4" iron pin, drilled 2" in rock with 2 1/2" aluminum cap marked as shown below, from which:

NEW BEARING TREES:

A 10" Douglas Fir bears North 12° East a dist. of 2.45 ft., marked CW 1/16 S27 BT.
A 5" Douglas Fir bears South 80° East a dist. of 13.85 ft., marked CW 1/16 S27 BT.

Set steel fence post approx. 1 ft. East.

BLM post falls approx. 45' South.

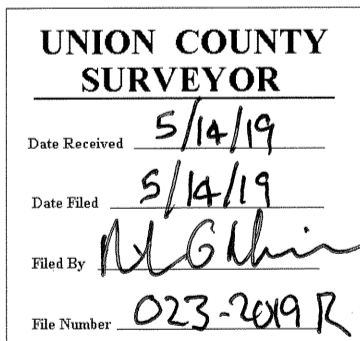
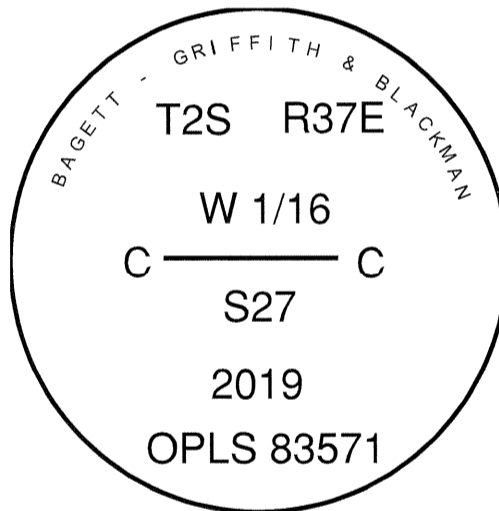
East/West road falls North of monument approx. 50 ft..

I hereby certify that the corner was monumented on April 30, 2019.

Witness: Kyle A. Tucker.



Renewal Date: June 30, 2019



I used a steel tape and magnetic compass in the establishment of the new accessories. I used 13° East declination, the distances are to a 60d spike driven into the right side of the root crown of the bearing trees. The bearings are to a brass washer marked OPLS 83571 attached to the BT blaze of the new bearing trees.