

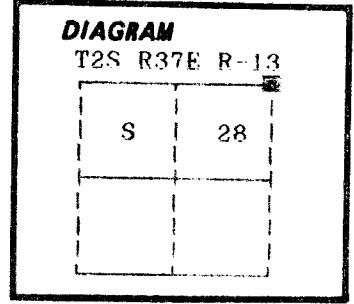
CERTIFIED RECORD OF LAND CORNER MONUMENTATION

History of original corner establishment:

Corner originally established by Henry Meldrum under GLO Contract Number 450, dated June 11, 1882. Surveyor General record states:

Set post 4 ft. long, 4 in. square, 24 in. in ground for cor. to Secs. 21, 22, 27 & 28 marked T2S S22 on NE, R37E S21 on NW, S28 on SW and S27 on SE with 2 notches on S and 3 on E edges, from which;

- A Pine 7 in. diam. bears N87°E, 19 lks. dist. marked T2S S22 BT
- A Pine 9 in. diam. bears S47°E, 25 lks. dist. marked S27 BT
- A Pine 10 in. diam. bears S73°W, 18 lks. dist. marked S28 BT
- A Tamarack 10 in diam bears N50°W, 66 lks dist marked R37E S21 BT



No record of subsequent monumentation found in Union County survey records.

Description of corner evidence found:

Found no evidence of the original corner monument.

Area has been severely logged.

See map of survey dated June 1992.

Description of monument and accessories I established to perpetuate the original location of this corner:

At the proportionate position as determined by survey, I set a 2 1/2"x30" aluminum pipe with aluminum cap marked as shown, 30 inches in the ground, from which;

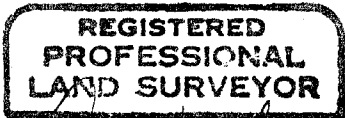
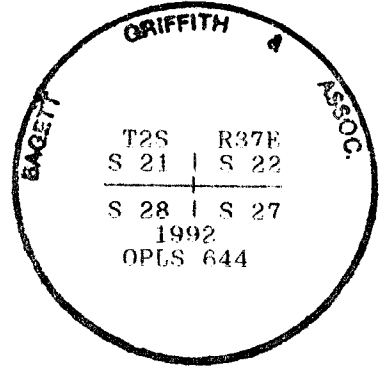
New Bearing Trees;

- A 14 inch diameter White Fir bears N54°E, 74.24 feet marked T2S R37E S22 BT
- A 13 inch diameter Lodge Pole Pine bears S28°E, 75.17 feet marked T2S R37E S27 BT
- A 9 inch diameter Tamarack bears S69°W, 23.67 feet marked T2S R37E S28 BT
- A 14 inch diameter Douglas Fir bears N28°W, 53.84 feet marked T2S R37E S21 BT

Set a steel fence post approximately 7 feet East, with Attention sign attached.

I hereby certify that the above corner point was perpetuated as hereon described on May 27, 1992.

Witness: Peter Crabtree



Duane I. Griffith

OREGON
JULY 10 1984
DUANE I. GRIFFITH
644

I used a steel tape and magnetic compass in the establishment of new accessories. I used 17° East magnetic declination and the distances are to a 50d spike driven in the right side of the root crown. I attached a brass washer marked OPLS 644 to the BT blaze.

Office of..... County of.....
 State of....., I hereby certify that the within instrument was filed in this office
 for record on the..... day of.....

(COUNTY OFFICIAL)

19
UNION COUNTY
by **SURVEYOR** (DEPUTY)

Date Received 9/15/92

Date Filed 9/15/92

By Hugon J. Clark

File No. 057-1992K

Form R6-7100-57 (9/71)

☆ GPO:

CERTIFIED RECORD OF LAND CORNER MONUMENTATION

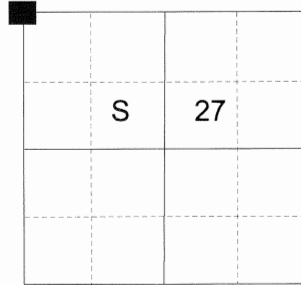
HISTORY OF ORIGINAL CORNER ESTABLISHED:

Corner originally established by Henry Meldrum under GLO contract number 450 dated June 11, 1882. Surveyor General field notes state:

Set post 4 ft. long, 4 in. square, 24 in. in ground for cor. to secs. 21, 22, 27, & 28 marked T2S S22 on NE, R37E, S21 on NW, S28 on SW and S27 on SE with 2 notches on S and 3 on E edges, from which:

- A pine 7 ins. diam. bears N87°E 19 lks dist marked T2S S22 BT.
- A pine 9 ins. diam. bears S47°E 25 lks dist marked S27 BT.
- A pine 10 ins. diam. bears S73°W 18 lks dist marked S28 BT.
- A tamarack 10 ins. diam. bears N50°W 66 lks dist marked R37E S21 BT.

T 2 S R 37 E R-13



Corner monumented by Duane Griffith in Union County Survey # 032-1992 dated July 15, 1992. Union County Monumentation Record # 057-1992R dated May 27, 1992 states:

Found no evidence of the original corner monument. Area has been severely logged. At the proportionate position as determined by survey I set a 2 1/2"x30" aluminum pipe with aluminum cap marked as shown below, 30 inches in the ground from which:

- A 14 inch diameter White Fir bears N54°E, 74.24 feet marked T2S R37E S22 BT.
- A 13 inch diameter Lodge Pole bears S28°E, 75.17 feet marked T2S R37E S27 BT.
- A 9 inch diameter Tamarack S69°W, 23.65 feet marked T2S R37E S28 BT.
- A 14 inch diameter Douglas Fir bears N28°W, 53.84 feet marked T2S R37E S21 BT.

Set a steel fence post approx. 7 ft. East.

DESCRIPTION OF CORNER EVIDENCE FOUND:

Found a 2 1/2" aluminum pipe with 2 1/2" aluminum cap marked as shown below, flush with the ground from which:

- A 21 inch diameter White Fir bears North 54° East, a dist. of 74.20 feet, alive and vigorous with healed blaze.
- A 15 inch diameter stump bears South 28° East, a dist. of 75.17 feet.
- A 13 inch diameter Tamarack South 69° West, a dist. of 23.67 feet, alive and vigorous with healed blaze.
- An 18 inch diameter Douglas Fir bears North 28° West, a dist. of 53.84 feet, alive and vigorous with healed blaze.

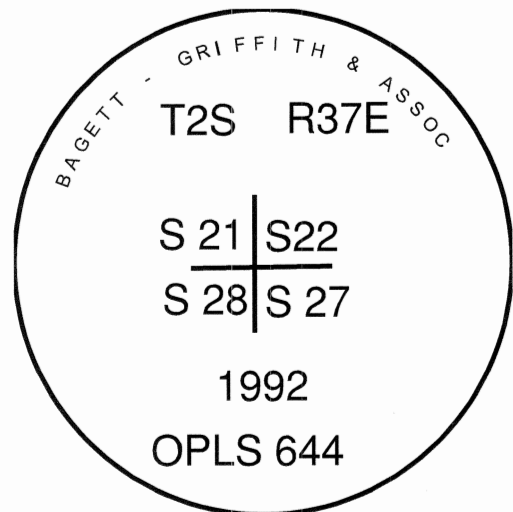
DESCRIPTION OF MONUMENT AND ACCESSORIES I ESTABLISHED TO PERPETUATE THE ORIGINAL LOCATION OF THIS CORNER:

NEW BEARING OBJECTS:

A 5" White Fir bears South 50° East a dist. of 28.45 ft., marked X BT.

I hereby certify that the corner was perpetuated on April 17, 2019.

Witness: Kyle A. Tucker



**REGISTERED
PROFESSIONAL
LAND SURVEYOR**

OREGON
June 2, 2010
JEFFREY S. HSU
83571

Renewal Date: June 30, 2019

**UNION COUNTY
SURVEYOR**

Date Received 4/30/19

Date Filed 4/30/19

Filed By [Signature]

File Number 015-2019R

I used a steel tape and magnetic compass in the establishment of the new accessory. I used 13° East declination, the distance is to a 60d spike driven into the right side of the root crown of the bearing tree. The bearing is to a brass washer marked OPLS 83571 attached to the BT blaze of the new bearing tree.

HORIZONTAL CONTROL DATA

UNION COUNTY, OREGON

OREGON STATE PLANE, NORTH ZONE (3601)

STA NAME: 2019017

SECTION CORNER COMMON TO SECTIONS 21, 22, 27 AND 28

TWP. 2 S RGE. 37 E.

GEODETIC COORD: NAD 83(91)

DATE TIED: April 17, 2019

LAT: 45 ° 22 ' 10.93934 " N

SURVEYOR: RICK G. ROBINSON
OPLS 2219

LONG: 118 ° 10 ' 45.40100 " W

FIRM: BAGETT, GRIFFITH, & BLACKMAN
2006 ADAMS AVENUE
LAGRANDE, OR 97850
(541) 963-6092

SP. COOR: NAD 83(91)

N: 629446.837 INT FT.

E: 8798418.535 INT FT.

TYPE: GPS

THETA: 1 ° 38 ' 44.9647872 "

ORDER: SECOND CLASS: 1

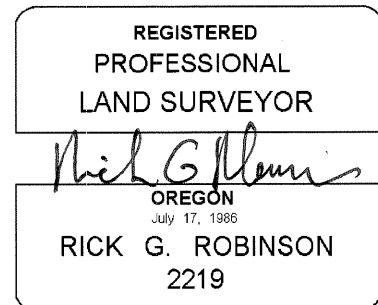
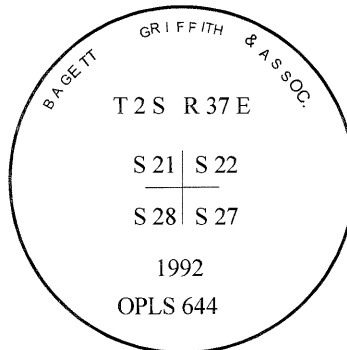
SCALE FACTOR: 0.9999007209

ELEV: 4644.98 US FT.

ELEV: DATUM: NGVD 29

COMMENTS:

2 1/2" aluminum monument with aluminum cap marked as shown



Renewal Date: December 31, 2020

1 METER = 3.2808333333... US FEET = 39.37 INCHES

1 METER = 3.280839895 INT'L FEET OR 1 INCH = 2.54 CM

TO CALCULATE ELEVATION FACTOR (IN THE NORTH AMERICAN CONTINENT)

DIVIDE 20,906,000 BY (20,906,000 + ELLIPSOID ELEV. IN FEET)