

Index File No. U 17

CORNER RECORD (SEARCH)

Tract or Survey No. \_\_\_\_\_ Cor. No. \_\_\_\_\_

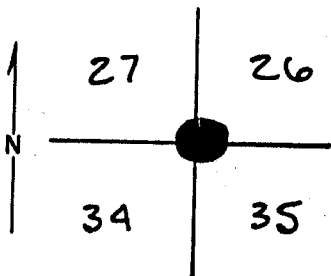
T 25 R. 36 E

R.D. \_\_\_\_\_ County \_\_\_\_\_

Merid. \_\_\_\_\_

N.F. \_\_\_\_\_ State \_\_\_\_\_

CORNER DIAGRAM



DESCRIBE CORNER MONUMENT FOUND

The corner to sections 26, 27, 34 & 35 monumented with a basalt stone 18" x 15" x 12" firmly set in a mound of stones 3' base and 2' high no marks visible from which the remains of the original bearing trees

DESCRIBE BEARING TREES OR OTHER OFFICIAL ACCESSORIES FOUND

A burned pine stump size indeterminate bears S. 42° E. 23 lks. no marks visible

A burned and decayed pine stump size indeterminate bears S. 53° W. 177 lks. no marks visible

A burned pine snag 20" dia. bears N. 10° W. 125 lks. with scribe marks BT visible on burned double blaze (Record N. 8° W.)

DESCRIBE CORNER LOCATION RELATIVE TO NEAR-BY FEATURES, ALSO HOW TO REACH CORNER

PHOTO IDENTIFICATION DATA

Photo No. ENW 4-216

Filed At. La Grande

Object Ident. \_\_\_\_\_

Ident. By D. F. [Signature]

PLANE COORDINATE POSITION DATA

State \_\_\_\_\_ Zone \_\_\_\_\_

X \_\_\_\_\_

Y \_\_\_\_\_

Estab. By \_\_\_\_\_

Agency

Signature

Title

Division

Headquarters

Date

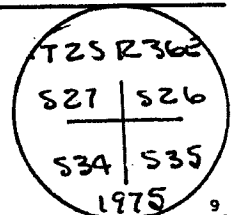
7100-52  
REV. 65 5

CORNER RECORD (PERPETUATION)

MONUMENT: DESCRIBE NEW MONUMENT SET, OR WORK DONE TO PRESERVE EXISTING MONUMENT

Set an iron post 28" long 2 1/2" dia. 15" in the ground in a mound of stone 3 1/2" base to top with brass cap marked

From which new bearing trees



ACCESSORIES DESCRIBE NEW BT'S WITNESS OBJECTS ETC. ESTABLISHED, OR WORK DONE TO PRESERVE EXISTING EVIDENCE

A pine 20" dia. bears N. 34 3/4° E. 112 lks marked T2S R36E S26 BT

A pine 32" dia. bears S. 66 3/4° E. 73 lks marked T2S R36E S35 BT

A pine 14" dia. bears S. 49 1/2° W. 179 lks marked T2S R36E S34 BT

A pine 20" dia. bears N. 68 1/2° W. 213 lks marked T2S R36E S27 BT

Deposit corner stone along side the iron post

Work Done By Garrison

Title C. Surveyor

Date 7/75

State Registration No. or Agency \_\_\_\_\_

Certified Cor. Record Prepared? Yes No

Filed At: \_\_\_\_\_

Date \_\_\_\_\_

REMARKS

Index File No.

T.

R.

M.

Tract or Surv. No.

Cor.

UNION COUNTY SURVEYOR

Date Received \_\_\_\_\_

Date Filed 12-16-87

By G. LANGLITZ, Deputy

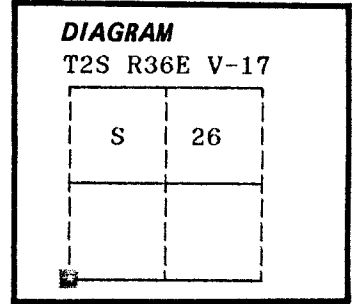
File No. 195-87R

V-17

**CERTIFIED RECORD OF LAND CORNER MONUMENTATION**

**History of original corner establishment:**

Corner originally established by John A. Hurlburt under GLO contract number 201, dated August 5, 1873. Surveyor General record states: Set basalt stone 18x15x12 10 in. in ground for cor. to secs. 26-27-34 and 35.  
 Pine 24 in. dia. N44°E 96 lks  
 Pine 18 in. dia. N8°W 125 lks  
 Pine 15 in. dia. S53°W 177 lks  
 Pine 20 in. dia. S42°E 23 lks



Corner remonumented by A. Joseph Garrison, under BLM group number 350, dated May 3, 1957. His record states: The cor. of secs 26, 27, 34 and 35 monumented with a basalt stone firmly set in a mound of stone, no marks visible, from which the remains of the original bearing trees: A burned pine stump, size indeterminate, bears S42°E, 23 lks. dist., no marks visible. A burned and decayed pine stump, size indeterminate, bears S53°W, 177 lks. dist., no marks visible. A burned pine snag, 20 ins. diam., bears N10°W, 125 lks. dist., with scribe marks visible. (Record N8°W). At the corner point set an iron post 28 in long 2½ in dia 15 ins. in the ground in a mound of stone with brass cap marked (markings shown below) from which a new bearing trees: A pine 20 ins. diam. bears N31 3/4°E, 112 lks dist. mkd. T2S R36E S26 BT. A pine 32 ins. diam. bears S66 3/4°E, 73 lks dist. mkd. T2S R36E S35 BT. A pine 14 ins. diam. bears S49½°W, 179 lks dist. mkd. T2S R36E S34 BT. A

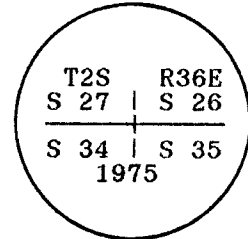
pine 20 ins. diam. bears N68½°W 213 lks dist. mkd. T2S R36E S27 BT. No record of subsequent monumentation found in Union County survey records.

**Description of corner evidence found:**

Found standard BLM brass cap monument marked as shown:

**Original Bearing Trees:**

A burned pine stump bears S42°E, 23 lks, no marks visible.  
 A burned pine stump, bears S53°W, 177 lks, no marks visible.  
 A 20 inch diameter burned pine snag bears N10°W, 125 lks., with scribe marks visible. (Record N8°W).



**BLM Bearing Trees:**

A 20 inch diameter Ponderosa Pine bears N31 3/4°E, 112 lks., with blaze evident.  
 A 32 inch diameter Ponderosa Pine bears S66 3/4°E, 73 lks., with blaze evident.  
 A 14 inch diameter Ponderosa Pine bears S49½°W, 179 lks., with blaze evident.  
 A 20 inch diameter Ponderosa Pine bears N68½°W, 213 lks., with blaze evident.

Description of monument and accessories I established to perpetuate the original location of this corner:

Painted a 6 inch red band around all BTs and attached bearing tree and land survey monument signs.

Set a steel fencepost approximately 5 feet North with land survey monument sign attached.

I hereby certify that the above corner point was perpetuated as hereon described on May 1, 1989.

**REGISTERED  
PROFESSIONAL  
LAND SURVEYOR**

OREGON  
JULY 10, 1964  
**DUANE I. GRIFFITH**  
644

UNION COUNTY SURVEYOR	
Date Received	<u>8-22-89</u>
Date Filed	<u>8-22-89</u>
By	<u>G. LANGRITZ, DEPUTY</u>
File No.	<u>151-89 R</u>

Office of..... County of.....

State of....., I hereby certify that the within instrument was filed in this office

for record on the..... day of....., 19.....

..... by .....

(COUNTY OFFICIAL)

(DEPUTY)

Remonumentation of Certain Original Corner Points,  
T. 2 S., R. 36 E., Willamette Meridian, Oregon

CHAINS

Deposit corner stone alongside iron post.

The  $\frac{1}{4}$  sec. cor. of secs. 23 and 24, determined at record bearing and distance from the original bearing trees:

A pine, 16 ins. diam., bears N.  $82^{\circ}$  W., 16 lks. dist., with scribe marks  $\frac{1}{4}$  S visible on open blaze.

A pine, 30 ins. diam., bears S.  $67^{\circ}$  E., 9 lks. dist., with healed blaze.

At the corner point

Set an iron post, 28 ins. long,  $2\frac{1}{2}$  ins. diam., 24 ins. in the ground, with brass cap mkd.

T 2 S R 36 E  
 $\frac{1}{4}$   
S 23 | S 24  
1975

The cor. of secs. 10, 11, and 12, monumented with a basalt stone, 24 x 14 x 7 ins., firmly set 10 ins. in the ground, and in a mound of stone, 3 ft. base,  $1\frac{1}{2}$  ft. high, no marks visible, from which the remains of the original bearing tree:

A sawed and decayed pine stump, 22 ins. diam., bears N.  $74^{\circ}$  E., 178 lks. dist., with axe marks visible. (record 173 lks.)

At the corner point

Set an iron post, 28 ins. long,  $2\frac{1}{2}$  ins. diam., 10 ins. in the ground, in a mound of stone, 5 ft. base, to top, with brass cap mkd.

T 2 S R 36 E  
S 2 | S 11  
S 11 | S 12  
1975

from which new bearing trees

A pine, 23 ins. diam., bears N.  $50\frac{1}{2}^{\circ}$  E., 167 lks. dist., mkd. T2S R36E S1 BT.

A pine, 24 ins. diam., bears S.  $49\frac{1}{2}^{\circ}$  E., 809 lks. dist., mkd. T2S R36E S12 BT.

A pine, 9 ins. diam., bears S.  $15\frac{1}{2}^{\circ}$  W., 211 lks. dist., mkd. T2S R36E S11 BT.

A pine, 18 ins. diam., bears N.  $82\frac{1}{2}^{\circ}$  W., 442 lks. dist., mkd. T2S R36E S2 BT.

Deposit corner stone alongside iron post.

The cor. of secs. 26, 27, 34, and 35, monumented with a basalt stone, 18 x 15 x 12 ins., firmly set in a mound of stone, 3 ft. base, 2 ft. high, no marks visible, from which the remains of the original bearing trees:

A burned pine stump, size indeterminate, bears S.  $42^{\circ}$  E., 23 lks. dist., no marks visible.

UNION COUNTY  
SURVEYOR

Date Received 3/15/13

Date Filed 3/15/13

By [Signature] DEPUTY

File No. 356-2013R

Remonumentation of Certain Original Corner Points,  
T. 2 S., R. 36 E., Willamette Meridian, Oregon

CHAINS

A burned and decayed pine stump, size indeterminate,  
bears S. 53° W., 177 lks. dist., no marks visible.

A burned pine snag, 20 ins. diam., bears N. 10° W.,  
125 lks. dist., with scribe marks BT visible on  
burned double blaze. (Record, N. 8° W.)

At the corner point

Set an iron post, 28 ins. long, 2½ ins. diam., 15 ins.  
in the ground, in a mound of stone, 3½ ft. base, to top,  
with brass cap mkd.

T 2 S R 36 E  
S 27 | S 26  
S 34 | S 35  
1975

from which new bearing trees

A pine, 20 ins. diam., bears N. 31¾° E., 112 lks.  
dist., mkd. T2S R36E S26 BT.

A pine, 32 ins. diam., bears S. 66¾° E., 73 lks.  
dist., mkd. T2S R36E S35 BT.

A pine, 14 ins. diam., bears S. 49½° W., 179 lks.  
dist., mkd. T2S R36E S34 BT.

A pine, 20 ins. diam., bears N. 68½° W., 213 lks.  
dist., mkd. T2S R36E S27 BT.

Deposit corner stone alongside iron post.

The ¼ sec. cor. of secs. 26 and 27, determined at record  
bearing and distance from the remains of the original  
bearing trees:

A root hole, bears N. 54° E., 67 lks. dist.

A pine, 30 ins. diam., bears N. 23° W., 48 lks.  
dist., with scribe marks ¼ S visible on burned  
and partially healed blaze.

At the corner point

Set an iron post, 28 ins. long, 2½ ins. diam., 22 ins.  
in the ground, with brass cap mkd.

T 2 S R 36 E  
S 27 | S 26  
1975

from which a new bearing tree

A pine, 20 ins. diam., bears N. 36½° E., 70 lks.  
dist., mkd. ¼ S26 BT.

The ¼ sec. cor. of secs. 22 and 23, determined at record  
bearing and distance from the remains of the original  
bearing trees:

A pine, 30 ins. diam., bears S. 26° E., 30 lks.  
dist., with scribe marks ¼ S visible on burned  
blaze.

UNION COUNTY  
SURVEYOR

Date Received 3/5/13

Date Filed 3/15/13

By [Signature] DEPUTY

File No. 356-2018R

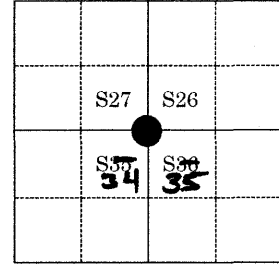
T2S36 T17

T2S36 P17

**CERTIFIED RECORD OF LAND  
CORNER MONUMENTATION**

T02S R36E  
V-17

<b>RECOVERED BY</b>	<b>COORDINATE SYSTEM, ZONE, &amp; UNIT</b>	
Matthew Faulkner, Oregon PLS	United States/NAD83, Oregon North 3601, International foot	
<b>GCDB ID</b>	<b>NORTHING</b>	<b>EASTING</b>
500200	623563.53	8771842.24
<b>LATITUDE</b>	<b>LONGITUDE</b>	
N45°21'20.246"	W118°16'59.566"	



**RECORD OF ORIGINAL CORNER AND SUBSEQUENT HISTORY:**

**Record No. 1:** The cor. of secs. 26, 27, 34 and 35 was established and described in the original field notes of the subdivisional lines T. 02 S., R. 36 E., Willamette Meridian, Oregon, executed by Deputy Surveyor John A. Hurlburt in 1874 under Contract Number 201. **Description:** Set basalt stone, 18x15x12 ins., 10 ins. in ground, for cor. of secs. 26-27-34-35.

- Pine 24 in. dia. N44°E, 96 lks.
- Pine 18 in. dia. N8°W, 125 lks.
- Pine 15 in. dia. S53°W, 177 lks.
- Pine 20 in. dia. S42°E, 23 lks.

**Record No. 2:** This same corner was perpetuated and remonumented in the field notes of the remonumentation of certain original corner points, T. 02 S., R. 36 E., Willamette Meridian, Oregon, executed by Cadastral Surveyor A. Joseph Garrison in 1975 under Group No. 350, Oregon. **Description:** The cor. of secs. 26, 27, 34, and 35, monumented with a basalt stone, 18 a 15 x 12 ins., firmly eat in a mound of stone, 3 ft. base, 2 ft. high, no marks visible, from which the remains of the original bearing trees:

- A burned pine stump, size indeterminate, bears S. 42° E., 23 lks. dist., no marks visible.
- A burned and decayed pine stump, size indeterminate, bears S. 53° W., 177 lks. dist., no marks visible.
- A burned pine snag, 20 ins. diam., bears N. 10° W. (**Record:** N. 8° W.), 125 lks. dist., with scribe marks BT visible on burned double blaze.

At the corner point

Set an iron post, 28 ins. long, 2 1/2 ins. diam., 15 ins. in the ground, in a mound of stone, 3 1/2 ft. base, to top, with brass cap mkd.

from which new bearing trees

- A pine, 20 ins. diam., bears N. 31°45' E., 112 lks. dist., mkd. T2SR36ES26BT.
- A pine, 32 ins. diam., bears S. 66°45' E., 73 lks. dist., mkd. T2SR36ES35BT.
- A pine, 14 ins. diam., bears S. 49°30' W., 179 lks. dist., mkd. T2SR36ES34BT.
- A pine, 20 ins. diam., bears N. 68°30' W., 213 lks. dist., mkd. T2SR36ES27BT.

**Record No. 3:** Certified Record of Land Corner Monumentation, on file with the Union County Land Surveyor's Office. By Duane I. Griffith, Oregon Professional Land Surveyor No. 644. Recorded on August 22, 1989, File No. 151-89 R. **Description:** Found standard BLM brass cap monument marked as shown:

Original Bearing Trees:

- A burned pine stump bears S42°E, 23 lks, no marks visible.
- A burned pine stump, bears S53°W, 177 lks, no marks visible.
- A 20 inch diameter burned pine snag bears N10°W, 125 lks., with scribe marks visible. (**Record** N8°W).

# CERTIFIED RECORD OF LAND CORNER MONUMENTATION

## BLM Bearing Trees:

- A 20 inch diameter Ponderosa Pine bears N31 3/4°E, 112 lks., with blaze evident.
- A 32 inch diameter Ponderosa Pine bears S66 3/4°E, 73 lks., with blaze evident.
- A 14 inch diameter Ponderosa Pine bears S49 1/2°W, 179 lks., with blaze evident.
- A 20 inch diameter Ponderosa Pine N68 1/2°W, 213 lks., with blaze evident.

Painted a 6 inch red band around all BTs and attached bearing tree and land survey monument signs. Set a steel fencepost approximately 5 feet North with land survey monument sign attached.

## DESCRIPTION OF CORNER EVIDENCE FOUND AND DESCRIPTION OF MONUMENT AND ACCESSORIES ESTABLISHED TO PERPETUATE THE LOCATION OF THIS CORNER:

**Recovery Date:** 10/20/2023

**Description:** The cor. of secs. 26, 27, 34 and 35, monumented with an iron post, 2 1/2 ins. diam., firmly set, projecting 1 ft. above the top of a mound of stone, 4 ft. base, 1 ft. high, with brass cap mkd. as shown below on this corner record and in the 1975 cadastral field notes. **(General Note Regarding the 1874 and 1975 BTs Recovered:** Within the bearing tree vicinity of the section corner, there is evidence of historic fires as well as tree harvesting activity. Thus, some of the BTs that are no longer standing may have been relocated due to human activity).

from which the remaining 1874 GLO bearing trees:

- A burned pine stump, size indeterminate, bears S. 42° E., 23 lks. dist., no marks visible.
- A burned pine snag, 20 ins. diam., bears N. 10° W. 125 lks. dist., with illegible scribe marks visible in a partially healed blaze.

from which the remaining 1975 BLM bearing trees:

- A Ponderosa Pine, 20 ins. diam., bears N. 31 3/4° E., 112 lks., with illegible scribe marks visible in a partially healed blaze.
- A downed fire scarred Ponderosa Pine, 20 ins. diam., bears S. 8° W. (**Record:** N. 8° W.), 217 lks. dist. (**Record:** 125 lks. dist.), with illegible scribe marks faintly visible in a fire scarred blaze.
- A downed fire scarred pine, 20 ins. diam., bears N. 68 1/2° W., 213 lks. dist., with a fire scarred blaze.

Rebuilt the mound of stone surrounding the iron post monument to now be 4 1/2 ft. base, to top of the brass cap. Set a carsonite post, S., approximately 3 ft. dist., from the monument. Painted the blazes with red spray paint.

### CAP MARKING PHOTO



**CERTIFIED RECORD OF LAND**  
**CORNER MONUMENTATION**

The remaining 1874 GLO SE bearing tree:



The remaining 1874 GLO NW (by record) bearing tree:



The remaining 1975 BLM NE bearing tree:



The remaining 1975 BLM SW bearing tree:



The remaining 1975 BLM NW bearing tree:



UNION COUNTY  
SURVEYOR

---

Date Received 12/22/23

Date Filed 12/22/23

By [Signature]

File No. 063-2023R

REGISTERED  
PROFESSIONAL  
LAND SURVEYOR

[Signature]

OREGON  
JUNE 08, 2009  
MATTHEW J. FAULKNER  
75618LS

RENEWS: 12/31/25