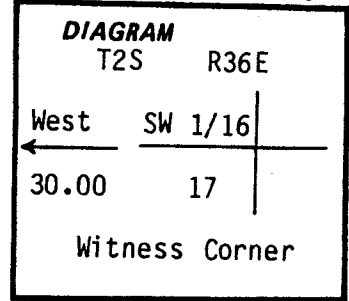


CERTIFIED RECORD OF LAND CORNER MONUMENTATION

History of original corner establishment:

Not established during original survey

Index File No. M-6



Description of corner evidence found:

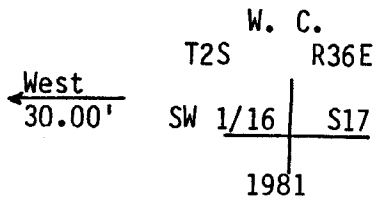
None

Description of monument and accessories established to perpetuate the original location of this corner:

Corner location determined by survey and subdivision of Section 17. At surveyed point: set a 2 1/2" x 30" galvanized pipe 24" in the ground for witness corner for SW 1/16 S17. The brass cap is stamped:

From which:

- WCX BT. A 29" Engleman Spruce bears N41°W 70.1 ft. scribed
- WCX BT. A 22" Engleman Spruce bears S80°W 38.4 ft. scribed



OR PLS1099

Attached 54-3 and 54-4 signs to BT's. Painted blazes red and 6" ring around BT. Attached brass washers LS1099 to foot blazes. Set a metal fencepost 5' East with 54-4 and 54-2. Also, metal fence post 5' North with 54-2 and 54-9.

Corner falls 35' West of R.R. track in winding creek bed.

Compass Declination: 18 1/2° East

I hereby certify the above described corner monument and/or accessories was established on November 4, 1981.

Witnesses: Loren Huntsman
Millard Wyatt
Greg Orton



Office of..... Surveyor..... County of..... Union.....
State of..... Oregon..... I hereby certify that the within instrument was filed in this office
for record on the... 4... day of... OCTOBER... 1982
Howard L. Perry by Gary L. Langlitz
(COUNTY OFFICIAL) (DEPUTY)

UNION COUNTY SURVEYOR	
Date Received	_____
Date Filed	PO 799-509 _____
By	_____
File No.	263-84 R