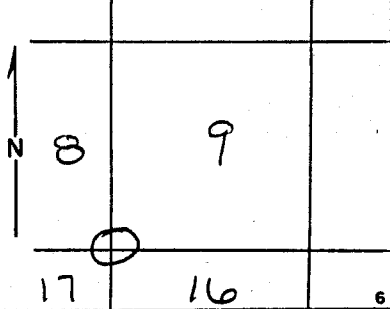


BRASS CAP

Index File No. J 9 CORNER RECORD (SEARCH) Tract or Survey No. _____ Cor. No. _____
 T 2S R. 36E R.D. _____ County _____
 Merid. _____ N.F. _____ State _____

CORNER DIAGRAM



DESCRIBE CORNER MONUMENT FOUND

The corner to sections 8, 9, 16 & 17 determined at record bearing and distance from the remains of the original bearing trees, which are:

DESCRIBE BEARING TREES OR OTHER OFFICIAL ACCESSORIES FOUND

- A fir 30" dia. bears N. 53° E. 40 lks. with illegible scribe marks visible in a partially healed blaze
- A root hole bears S. 67° E. 55 lks. with a down and decayed pine snal along side 30" dia. with axe marks visable
- A fir 25" dia. bears S 78° W. 92 lks. with no marks visible in a partially healed double blaze

PHOTO IDENTIFICATION DATA

Photo No. _____
 Filed At. _____
 Object Ident. _____
 Ident. By _____
Signature

DESCRIBE CORNER LOCATION RELATIVE TO NEAR-BY FEATURES, ALSO HOW TO REACH CORNER

A pine 14" dia. bears N. 58° W. 26 lks. with scribe marks S8 visable in a partially healed blaze

PLANE COORDINATE POSITION DATA

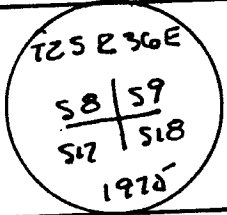
State _____ Zone _____
 X _____
 Y _____
 Estab. By _____
Agency

Signature _____ Title _____ Division _____ Headquarters _____ Date _____ 7100-52 REV. 65 5

CORNER RECORD (PERPETUATION)

MONUMENT: DESCRIBE NEW MONUMENT SET, OR WORK DONE TO PRESERVE EXISTING MONUMENT

Set an iron post 28" long 2 1/2" dia. 24" in ground with brass cap marked



From which a new bearing tree :

ACCESSORIES DESCRIBE NEW BT'S WITNESS OBJECTS ETC. ESTABLISHED, OR WORK DONE TO PRESERVE EXISTING EVIDENCE

A fir 6" dia. bears S 66 3/4° E. 21 1/2 lks. marked T2S R36E S16 BT

Work Done By Garrison Title C. Surveyor Date 7/75 State Registration No. _____ or Agency _____
 Certified Cor. Record Prepared? Yes _____ No _____ Filed At: _____ Date _____

REMARKS

Index File No. _____ T. _____ R. _____ M. _____ Tract or Surv. No. _____ Cor. No. _____

UNION COUNTY SURVEYOR

Date Received _____

Date Filed 12-16-87

By G. LANGLITZ, DEPUTY

File No. 180-87R

6-5

Remonumentation of Certain Original Corner Points,
T. 2 S., R. 36 E., Willamette Meridian, Oregon

CHAINS

A pine, 10 ins. diam., bears N. 73½° E., 396 lks.
dist., mkd. T2S R36E S28 BT.

A pine, 17 ins. diam., bears S. 44¾° E., 165 lks.
dist., mkd. T2S R36E S33 BT.

Deposit corner stone alongside iron post.

The cor. of secs. 20, 21, 28, and 29, monumented with a
basalt stone, 15 x 12 x 12 ins., firmly set 8 ins. in the
ground, mkd. with 4 grooves on E. face, from which the
remains of the original bearing trees:

A decayed pine stump, 18 ins. diam., bears
N. 63° E., 84 lks. dist., no marks visible.

A decayed pine snag, 25 ins. diam., bears S. 33° E.,
67 lks. dist., with scribe marks T2S R36E S28
visible on open blaze.

A pine, 28 ins. diam., bears S. 21° W., 87 lks.
dist., with scribe marks 36E 29 visible on
partially healed blaze.

A pine stump, 22 ins. diam., bears N. 45° W., 69
lks. dist., no marks visible.

At the corner point

Set an iron post, 28 ins. long, 2½ ins. diam., 24 ins.
in the ground, with brass cap mkd.

T 2 S R 36 E
S 20 | S 21
S 29 | S 28
1975

from which new bearing trees

A fir, 6 ins. diam., bears N. 68¾° E., 6 lks.
dist., mkd. T2S R36E S21 BT.

A pine, 12 ins. diam., bears S. 53¼° E., 40 lks.
dist., mkd. T2S R36E S28 BT.

A pine, 14 ins. diam., bears N. 54° W., 21 lks.
dist., mkd. T2S R36E S20 BT.

Deposit corner stone alongside iron post.

The cor. of secs. 8, 9, 16, and 17, determined at record
bearing and distance from the remains of the original
bearing trees:

A fir, 30 ins. diam., bears N. 53° E., 40 lks.
dist., with illegible scribe marks visible on
partially healed blaze.

A root hole, bears S. 67° E., 55 lks. dist., with
a down and decayed pine snag alongside, 30 ins.
diam., with axe marks visible.

A fir, 25 ins. diam., bears S. 78° W., 92 lks.
dist., no marks visible on partially healed
double blaze.

**UNION COUNTY
SURVEYOR**

Date Received 3/15/13

Date Filed 3/15/13

By [Signature] DEPUTY

File No. 338-2013

T2S 36 R09

T2S 36 J09

Remonumentation of Certain Original Corner Points,
T. 2 S., R. 36 E., Willamette Meridian, Oregon

CHAINS

A pine, 14 ins. diam., bears N. 58° W., 26 lks.
dist., with scribe marks S8 visible on partially
healed blaze.

At the corner point

Set an iron post, 28 ins. long, 2½ ins. diam., 24 ins.
in the ground, with brass cap mkd.

T	2	S	R	36	E
		S	8	S	9
		S	17	S	16
					1975

from which a new bearing tree

A fir, 6 ins. diam., bears S. 66¾° E., 21½ lks.
dist., mkd. T2S R36E S16 BT.

The cor. of secs. 4, 5, 8, and 9, monumented with a
basalt stone, 18 x 12 x 12 ins., firmly set in a mound of
stone, 3 ft. base, 2 ft. high, mkd. with 5 grooves on S.
and 4 grooves on E. faces, from which the remains of the
original bearing trees:

A pine, 17 ins. diam., bears N. 80° E., 54 lks.
dist., with healed blaze. (Record, N. 75° E.)

A decayed pine stump, 9 ins. diam., bears S. 56½° E.,
49 lks. dist., no marks visible. (Record,
S. 59° E., 46 lks.)

A pine stump, 14 ins. diam., bears S. 42° W., 90 lks.
dist., with scribe marks ET visible on open
blaze.

A pine, 22 ins. diam., bears N. 63° W., 67 lks.
dist., with scribe marks T2S R36E S5 visible on
opened blaze. (Record, N. 65° W.)

At the corner point

Set an iron post, 28 ins. long, 2½ ins. diam., 6 ins.
in the ground, to solid rock, and in a mound of stone,
6 ft. base, to top, with brass cap mkd.

T	2	S	R	36	E
		S	5	S	4
		S	8	S	9
					1975

from which new bearing trees

A fir, 8 ins. diam., bears S. 28¾° E., 67 lks.
dist., mkd. T2S R36E S9 BT.

A pine, 8 ins. diam., bears S. 72½° W., 73 lks.
dist., mkd. T2S R36E S8 BT.

Deposit corner stone alongside iron post.

The ¼ sec. cor. of secs. 4 and 5, monumented with a
basalt stone, 15 x 12 x 10 ins., loosely set in a mound
of stone, 3 ft. base, 2 ft. high, no marks visible, from
which the remains of the original bearing trees:

UNION COUNTY
SURVEYOR

Date Received 3/15/13

Date Filed 3/15/13

By [Signature] DEPUTY

File No. 338-2013R